

# CASQA

6th  
Annual  
Conference

**Rethinking Stormwater Management** | Creative Solutions to Complex Problems

November 1 - 3, 2010  
Westin Mission Hills  
Rancho Mirage, California  

---

[www.casqa.org](http://www.casqa.org)

---



CONFERENCE PROGRAM



## 2010 CASQA Conference

For over 20 years the California Stormwater Quality Association (CASQA) has assisted the State of California, the United States Environmental Protection Agency, municipalities, special districts, and businesses in developing and implementing effective stormwater quality management programs.

The annual CASQA Conference has established itself as a “must attend” training event on the calendars of stormwater professionals, drawing the most influential and experienced leaders in the field from across the country. The 6th Annual Conference will again offer a full program of training workshops, presentations, and exhibits addressing a wide range of municipal, industrial, and construction NPDES stormwater permit requirements.



Scenes from  
the 2009  
CASQA  
Conference



PHOTOS: WWW.FLICKR.COM © RENNETT STOWE (FRONT COVER); BY STEVEN FRASHER & ASSOCIATES (LEFT)



The conference is being held at the  
Westin Mission Hills, 71333 Dinah Shore  
Drive, Rancho Mirage, CA 92270, from  
November 1–3, 2010.

### About CASQA

CASQA is a non-profit professional member association dedicated to the advancement of stormwater quality management through collaboration, education and outreach, implementation guidance, regulatory review, and scientific assessment.

### Join CASQA

Regular or affiliate membership in CASQA is open to organizations and individuals in the stormwater field, whether holders of NPDES permits or not. If you are not currently a member, by joining now, you can receive substantial reductions on the 2011 conference and webcast as well as receiving all the other benefits of membership (newsletters, downloadable products, quarterly meetings, etc.). CASQA membership provides substantial benefits even if you are based outside California. It's the right time to be a member of the premier professional association dedicated to the advancement of stormwater quality management, science, and regulation.

PHOTOS: BY ROBERT KEERAN, COACHELLA VALLEY WATER DISTRICT (TOP RIGHT); COURTESY WESTIN HOTELS & RESORTS (BOTTOM RIGHT)

## Conference Program

Tuesday and Wednesday, November 2 – 3, 2010

The conference theme is “**Rethinking Stormwater Management** | Creative Solutions to Complex Problems.” The conference will feature a record 82 concurrent session presentations and one plenary session over two days. Many of the leading stormwater practitioners in the nation will be making presentations.

Concurrent sessions will follow ten conference thematic tracks:  
(see pages 11 – 14 for detailed agendas)

### 1. Construction Permit

- a. Monitoring and Reporting
- b. Numeric Effluent Limits/Action Levels (NELs/NALs)
- c. New Development/Redevelopment
- d. Risk Assessment

### 2. Industrial Permit

- a. Case studies
- b. Monitoring and Reporting
- c. MS4s and Industrial Discharges
- d. NALs/NELs
- e. Permitting Strategy

### 3. Modifying Public Behavior

- a. Enforcement
- b. Inspections
- c. Public Education
- d. Training

### 4. Program Assessment

- a. Best Management Practices (BMP) Effectiveness Assessment
- b. Monitoring Assessment
- c. Program Effectiveness Assessment

### 5. Bioassessments

#### 6. Regulations, Permits, and Policies

- a. 303(d) Listings
- b. Basin Planning
- c. Effluent Limitations
- d. Maximum Extent Practicable (MEP)
- e. Receiving Water Limitations
- f. Statewide General Permits
- g. TMDL Case Studies
- h. TMDL Implementation

### 7. Sustainable Development

- a. Hydromodification
- b. Integrated Regional Planning
- c. Low Impact Development (LID) Case Studies
- d. LID Planning and Implementation
- e. Smart Growth vs LID
- f. Stormwater Harvesting and Reuse
- g. Watershed Planning

### 8. Stormwater Treatment

- a. BMP Case Studies
- b. BMP Design and Implementation
- c. Multi-Purpose Facilities
- d. Regional Treatment

### 9. Scientific Advances

- a. Economic Assessments
- b. Emerging Pollutants
- c. New Monitoring and Assessment Tools
- d. New Technologies
- e. Pollutant Source Tracking
- f. Stormwater Impacts

### 10. True Source Control

- a. Conservation
- b. Multi-Jurisdiction Approaches
- c. Pesticide Management and Regulation
- d. Producer Responsibility
- e. Product Substitutions
- f. Runoff Elimination
- g. Zero Waste

## Continuing Education Credits

Continuing Education Credits are available for attendees at the CASQA Conference in the following certifications:

### ■ American Institute of Certified Planners (AICP)

– CASQA is an approved AICP Certification Maintenance (CM) Provider. The Annual Conference, including the pre-conference workshops, has been approved as a multipart event with a total of 15 credits available based on contact hours. AICP certified planners can record credits by logging onto their CM Log and adding the credits from the calendar. Any issues with logging the credits should be sent to [AICPCM@planning.org](mailto:AICPCM@planning.org).

■ **Certified Inspector of Sediment and Erosion Control (CISEC); Certified Professional in Erosion and Sediment Control (CPESC); Certified Professional in Storm Water Quality (CPSWQ); Certified Erosion, Sediment and Stormwater Inspector (CESSWI)** – 15 Professional Development Units (PDUs) are available for attendance at the CASQA Conference, including the pre-conference workshops. No sign-in sheets, forms, or certificates are required at the CASQA Conference.

■ **California Water Environment Association (CWEA)** – 15 CWEA contact hours are available for attendance at the CASQA Conference, including the pre-conference workshops. A CWEA contact hour verification form must be filled out by those requesting CWEA contact hours at the registration table and CASQA will issue a Certificate of Completion.

■ **State Bar of California** – Minimum Continuing Legal Education (MCLE) credits have been requested from the State Bar of California. Please check with the registration desk regarding these credits.

## 2010 Conference Sponsors and Advertisers

CASQA would like to thank the following sponsors and advertisers for supporting the 2010 CASQA Conference.

---

### PLATINUM STORMWATER STEWARDS




---

### GOLD STORMWATER STEWARDS



Riverside County Flood Control  
and Water Conservation District

---

### SILVER STORMWATER STEWARDS



ONE COMPANY  
*Many Solutions®*

Burhenn & Gest LLP




---

### BRONZE STORMWATER STEWARDS

Bay Area Stormwater Management  
Agencies Association (BASMAA)

Ventura Countywide Stormwater  
Quality Management Program

---

### SILVER STORMWATER SUPPORTER




---

### LUNCH SPONSOR





# Today, through tomorrow

**AMEC has a proven track record of finding and implementing innovative solutions for challenging site conditions.**



The Elmer Avenue Neighborhood Retrofit project is an example of innovative solutions in stormwater capture, groundwater recharge, and community participation.



For more information:

Fresno (559) 264.2535  
Newport Beach (949) 642.0245  
Oakland (510) 663.4100  
Sacramento (916) 636.3200  
San Diego (858) 300.4300

**amec.com**



# MWS-LINEAR HYBRID

STORMWATER FILTRATION SYSTEMS

- Horizontal media flow minimizes clogging
- Built in 3-stage pretreatment
- Accepts inflow pipes subsurface
- 76% Nitrate removal (third party testing)
- Internal bypass

THE MOST VERSATILE BIOFILTRATION SYSTEM AVAILABLE!



Watch it Work

[www.modularwetlands.com](http://www.modularwetlands.com)

MODULAR  
WETLANDS™

NATURE AND TECHNOLOGY WORKING TOGETHER IN PERFECT HARMONY.

T 760.433.7640 E [info@modularwetlands.com](mailto:info@modularwetlands.com) [www.modularwetlands.com](http://www.modularwetlands.com)

## The Stormwater Standard

PROVEN STORMWATER TREATMENT TECHNOLOGY



Nutrient Sep. Baffle Box



Curb Inlet Basket



Grate Inlet Skimmer Box



Downspout Filter



Flume Filter



Modular Wetlands System



**BIO CLEAN**  
ENVIRONMENTAL SERVICES, INC.

BioClean Environmental Services has a complete line of stormwater filtration systems that are built to last! All BioClean filters come with a 5 Year Warranty - the best in the industry! Contact us today to learn more.

[www.biocleanenvironmental.net](http://www.biocleanenvironmental.net) • 760.433.7640

## Modular, Low Impact Design (LID) Stormwater Management Products



The TREEPOD™ Biofilter uses conventional tree box filter design criteria that has proven to be effective at the removal of ultra-fine and dissolved pollutants normally found in stormwater runoff. Can be used in conjunction with the CUDO™ Modular Water Management System.



**FloGard®**  
**PERK FILTER**  
Media Filtration Device

Perk Filters can be installed in existing drop inlets, installed as a catch basin system at individual inlets or as a centralized modular treatment system installed on-line or off-line. Can be used in conjunction with the CUDO™ Modular Water Management System.

**Washington State  
Department of Ecology  
General Use Level Designation for  
Basic & Phosphorous Treatment.**

Visit Us at  
**CASQA**  
BOOTH #9



**Contact us today to learn  
more about these exciting  
and innovative products.  
KRISTAR ENTERPRISES, INC.**

**1-800-579-8819**

**Visit our web site at:  
[www.kristar.com](http://www.kristar.com)**



## Pre-conference Workshops

Monday, November 1, 2010 | Full day 9:00 am to 4:30 pm (Pacific Time)

CASQA will be holding 4 pre-conference workshops. You can attend the workshops in person or can view the workshops via webcast.



### Workshop 1

Sustainable Mandates:

*Managing Feasibility and Compliance*

The workshop will examine the sustainability mandates in recent municipal stormwater permits in California and how municipalities across the state are planning to comply with them. The focus will be on balancing the need for compliance with the need for feasible low impact development (LID) and hydromodification measures. Public and private sector stormwater professionals will share their experiences with developing new and revised methods to achieve compliance with the new mandates. Topics will include a review of LID and hydromodification requirements in California stormwater permits, changes being planned for municipal stormwater management programs, designing feasible LID best management practices, and alternative approaches to compliance.

### Workshop 2

Municipal Stormwater 101/201:

*From Fundamentals to Practical Implementation*

The 101 portion of the workshop will provide municipal agency staff, consultants, and others with a valuable refresher on the fundamental municipal stormwater management requirements and regulatory framework. In the 201 portion, practical implementation advice and

case studies will be presented for managing data, preparing annual reports, assessing effectiveness, and keeping programs in compliance. The current status of various regulatory permits and initiatives will be discussed, including the California Phase II permit, construction general permits, and the EPA stormwater rulemaking. The workshop will be presented by a diverse group of seasoned professionals representing academia, regulatory agencies, and Phase 1 and II NPDES municipal programs.

### Workshop 3

Legal Framework:

*Past, Present and Near Future*

The workshop will provide legal and technical staff of municipal agencies, consultants, and others with a working understanding of fundamental municipal stormwater management legal requirements. The objectives are to provide understanding and familiarity with: advanced water quality legal concepts; key issues in the municipal permitting world and their associated legal implications; and, enforcement concerns, risks, procedures, and perspectives from the State and from environmental organizations.

### Workshop 4

General Construction Permit: *Implementation*

The workshop will take a closer look at the practical aspects of planning and implementation under the new California General Construction Permit. Presentations by State Water Board representatives, technical experts and dischargers will clarify the changes and present options for compliance. The objectives are to help project planners understand and meet the new rules; construction site personnel adapt to the changes; and public agencies establish appropriate practices for ensuring compliance.



# CASQA Pre-Conference Workshop Agendas

Monday, November 1, 2010

<b>7:30a - 5:30p</b>				
<b>REGISTRATION DESK (Celebrity Foyer)</b>				
<b>12:00 - 5:00p</b>				
<b>EXHIBITS (Celebrity EFGH)</b>				
	<b>WORKSHOP 1</b> Celebrity D	<b>WORKSHOP 2</b> Celebrity ABC	<b>WORKSHOP 3</b> Rancho Mirage AB	<b>WORKSHOP 4</b> Oasis 1-7
<b>WORKSHOP</b>	<b>Sustainability Mandates: MANAGING FEASIBILITY AND COMPLIANCE</b>	<b>Municipal Stormwater 101/201: FROM FUNDAMENTALS TO PRACTICAL IMPLEMENTATION</b>	<b>Legal Framework: PAST, PRESENT AND NEAR FUTURE</b>	<b>Construction General Permit: A PRACTICAL APPROACH</b>
<b>9:00 - 10:30</b>	<p>Welcome / Opening Remarks and Overview <i>Richard A. Watson : Richard Watson &amp; Associates</i></p> <hr/> <p>LID and Hydromodification Control Requirements in California MS4 Permits: A Comparison of Design Standards and Compliance Metrics <i>Mark Grey : Construction Industry Coalition on Water Quality</i></p> <hr/> <p>Ventura Permit: Odyssey Part II – The Saga Continues <i>Gerhardt Hubner : Ventura County Watershed Protection District</i></p> <hr/> <p>Orange County Permits – Model Water Quality Management Plan Revision Process <i>Richard Boon : County of Orange</i></p>	<p>Welcome / Opening Remarks and Overview <i>Geoff Brosseau : CASQA Carmel Brown : CKB Environmental Consulting; Daniel Apt : RBF Consulting</i></p> <hr/> <p>Stormwater 101 – The Basics: - Key Terms - Pollutants and Sources - Impacts - Impaired Waters - BMP Toolkit <i>Brian Currier : Sacramento State University</i></p>	<p>Welcome / Opening Remarks and Overview <i>Andre Monette : Best, Best &amp; Krieger</i></p> <hr/> <p>California Water Quality Law 201: - The Relationship Between Clean Water Act and Porter Cologne; - Basin Planning - Anti-backsliding and Anti-degradation Compliance Requirements for Stormwater Permits <i>Richard Montevideo : Rutan &amp; Tucker, LLP; Melissa Thorne : Downey Brand Attorneys LLP</i></p>	<p>Welcome / Opening Remarks and Overview <i>Bruce Lokkesmoe : GENI</i></p> <hr/> <p>Background and Overview of the new California Construction General Permit (CGP) <i>Bruce Lokkesmoe : GENI; Jason Uhley : Riverside County Flood Control and Water Conservation District; Marv Sachse : Brash Industries</i></p> <hr/> <p>Understanding the New Requirements: - Risk-based Approach - Electronic Submittals - Minimum BMPs by Risk Level - Rain Event Action Plans - Monitoring and Reporting - Credential Requirements <i>Annalisa Kihara : State Water Resources Control Board (invited); Patrick Otsuji : State Water Resources Control Board (invited)</i></p>
<b>10:30 - 10:45</b>				
<b>BREAK (East Celebrity Foyer)</b>				
<b>10:45 - 12:15</b>	<p>Determining the Feasibility of Implementing LID BMPs in Orange County <i>Eric Strecker : Geosyntec Consultants; Aaron Poresky, Geosyntec Consultants; Lisa Austin : Geosyntec Consultants</i></p> <hr/> <p>LID Mandates and Special Studies in the San Francisco Bay Area Regional Permit <i>Jill C. Bicknell, EOA, Inc</i></p>	<p>Stormwater 101 – Regulatory Background and Updates: - Federal and State Regulations and Initiatives; EPA Stormwater Rulemaking - Phase I Permit Issues - Phase II general permit (LID, hydromod, monitoring, non-traditional MS4s, etc.) - Construction general permit/relationship to MS4 permit <i>Richard Boon : County of Orange; John Tinger : US EPA; Gerald R. Montgomery : Interwest Consulting Group; Rebecca Winer-Skonovd : Larry Walker Associates</i></p>	<p>TMDLs: - Overview and Basis in the Clean Water Act - Where Science meets Law and Policy - Legal and Practical Challenges to Implementation - Cooperative Efforts to Obtain Feasible Standards <i>Chris Amantea : Hunton &amp; Williams; Tim Moore : Risk Sciences; David Burhenn : Burhenn &amp; Gest LLP</i></p>	<p>CGP Minimum Measures (CDE and sometimes F): - Practical Methods and Practices for Meeting the Requirements in the Specific Attachments of the CGP <i>Sandy Mathews : LWA; John Filipoff : Lennar</i></p>
<b>12:15 - 1:30</b>				
<b>EXHIBITOR FOCUS AND LUNCH (Master's Plaza)</b>				
<b>1:30 - 3:00</b>	<p>Unsettled Science: Writing Pragmatic LID BMP Design Guidance for the Inland Empire <i>Robert J. Cullen : P.E., Riverside County Flood Control and Water Conservation District</i></p> <hr/> <p>Managing Growth in the Inland Empire Using a Watershed Mapping Approach Integrating Water Supply, Water Quality, and Hydromodification Needs to Achieve MS4 Permit Goals <i>Panel Moderator, Matt Yeager : San Bernardino Flood Control District; Martha Davis : Inland Empire Utility Agency; Michael Adakapara : Santa Ana Regional Board; Susan Lien Longville : CSUSB Water Resources Institute; Omar Dandashi : Lewis Operating Corp.</i></p> <hr/> <p>From Gray to Green: Green Streets <i>Patrick R. Fuscoe : Fuscoe Engineering</i></p>	<p>Stormwater 201 – Getting More Advanced: - Data Management Tips; - Quantifying Results/ Assessing Effectiveness; - Preparing Meaningful Annual Reports <i>Phase I and II Representatives</i></p> <hr/> <p>Stormwater 201 – Program Element Case Studies: - New Development/Construction - Municipal Operations - Industrial, Commercial - Public Outreach - Illicit Discharge Investigation - Non-Traditional MS4 Perspectives <i>Daniel Rourke: Fresno Metropolitan Flood Control District Grant Sharp: County of Orange Phase I and II Representatives</i></p>	<p>Program Funding Options and Restrictions: - Proposition 218 and Traditional Restrictions on Funding - Options for funding and how to navigate the regulatory maze - State Mandates and Reimbursement for Program Elements <i>Kelly Salt, Best : Best &amp; Krieger, LLP; Mark Hildebrandt : Red Oak Consulting; Howard Gest : Burhenn &amp; Gest, LLP</i></p>	<p>The Construction Site Monitoring Program (CSMP): - Requirements for Storm and Non-Storm Discharges - Practical Aspects of Planning and Implementing the CSMP for Different Risk Levels <i>Marv Sachse : Brash Industries; Eric Berntsen : State Water Resources Control Board</i></p> <hr/> <p>Plan B: - Practical Aspects of Amending to Accommodate Changes - Navigating the Extra Layers of Approvals – the Qualified SWPPP Practitioner to the Qualified SWPPP Developer to the Legally Responsible Person <i>Bruce Lokkesmoe : GENI</i></p>
<b>3:00 - 3:30</b>				
<b>BREAK (Celebrity EFGH)</b>				

## CASQA Pre-Conference Workshop Agendas

Monday, November 1, 2010 (continued)

	WORKSHOP 1 Celebrity D	WORKSHOP 2 Celebrity ABC	WORKSHOP 3 Rancho Mirage AB	WORKSHOP 4 Oasis 1-7
WORKSHOP	Sustainability Mandates: MANAGING FEASIBILITY AND COMPLIANCE	Municipal Stormwater 101/201: FROM FUNDAMENTALS TO PRACTICAL IMPLEMENTATION	Legal Framework: PAST, PRESENT AND NEAR FUTURE	Construction General Permit: A PRACTICAL APPROACH
3:30 – 4:30	<p>Alternative Compliance Approaches Panel Panel Moderator: Donald J. Schroeder : CDM Gene Estrada : City of Orange; Dan Cloak : Dan Cloak Environmental Consulting; Dave Bartlett : Brookfield Homes; Scott Crawford : Lewis Operating Corp.</p> <hr/> <p>Closing Comments Richard A. Watson : Richard Watson &amp; Associates</p>	<p>Stormwater 201: - Water Quality Monitoring - Data Management Tips - Quantifying Results/ Assessing Effectiveness - Preparing Meaningful Annual Reports Karen Ashby : Larry Walker Associates Phase I and II Representatives</p> <hr/> <p>Closing comments Carmel Brown : CKB Environmental Consulting; Daniel Apt : RBF Consulting</p>	<p>Perspectives on Enforcement: - Role of the NGO in the Enforcement Process - Dynamics with the State and Regional Boards and the Decision on Enforcement - Enforcement Defense from the Discharger's Perspective Wayne Rosenbaum : Foley &amp; Lardner, LLP; David Beckman : Natural Resources Defense Council; Michael Lauffer / Reed Sato : State Water Resources Control Board</p>	<p>Panel Discussion: - Experts Discuss the Cloudy Issues and Try to Answer the Hard Questions Marv Sachse : Brash Industries; Bruce Lokkesmoe : GENI; Eric Berntsen : State Water Resources Control Board; John Filipoff : Lennar; Sandy Mathews : LWA</p>
4:30 – 5:00	EXHIBITOR FOCUS (Celebrity EFGH)			



**Working Together** to  
improve our water resources

**Geosyntec**<sup>▷</sup>  
consultants

[www.geosyntec.com](http://www.geosyntec.com)

Los Angeles • Huntington Beach • Santa Barbara  
Pasadena • Oakland • Riverside • San Diego

**Providing value-driven solutions to the most  
challenging storm water quality problems**

Municipal • Industrial  
Development • Construction



# CASQA Conference Agenda

Tuesday, November 2, 2010

7:30a - 5:30p		REGISTRATION DESK (Celebrity Foyer)			
8:00a - 7:30p		EXHIBITS (Celebrity EFGH)			
PLENARY SESSION 8:30 – 9:40	Welcome and Opening Remarks – Scott Taylor, Chair, CASQA				
	Keynote Address – Tim Moore, Risk Sciences “Storm Water Compliance: Lessons from Star Trek and the Cuban Missile Crisis” (Ambassador 1-4)				
9:40 - 10:00		BREAK			
	TRACK A Oasis 1-4	TRACK B Oasis 5-7	TRACK C Rancho Mirage AB	TRACK D Celebrity ABC	TRACK E Celebrity D
SESSION 1	Construction	Stormwater Treatment	Program Assessment	True Source Control	Sustainable Development
	Moderator: Stephanie Reyna-Hiestand, City of Tracy	Moderator: Bill Flores, HDR	Moderator: Arlene Chun, Riverside County Flood Control & Water Conservation District	Moderator: Kelly Moran, TDC Environmental	Moderator: Gerhardt Hubner, Ventura County
10:00 - 10:30	CGP Compliance on the Front Line, Case Studies from America's Fourth Largest Contractor Kim Williams : Geosyntec Consultants; Allen Gershenson : Kiewit West Infrastructure Co.	Hansen Dam Wetlands Restoration Project Daniel Lee : Malcolm Pirnie	Where Science Meets Reality – Implementing Effective Street Sweeping Supported by the Public Clement Brown : City of San Diego; Jennifer Nichols Kearns : City of San Diego	True Source Control for TMDL Compliance – How to Achieve Compliance, Save Billions in Treatment Costs, and Be a Hero Kelly Moran : TDC Environmental California 303(d) List - The Tsunami of TMDLs and How True Source Control Could Help Fred Krieger : Consultant	Meeting the 2011 Harvesting-and-Use Mandate Today Tom Dalziel : Contra Costa Clean Water Program; Dan Cloak : Dan Cloak Environmental Consulting
10:35 - 11:05	Enforcement Leading to Compliance Chandra Thomas : Riverside County; Rebecca Stewart : San Diego Regional Water Quality Control Board	Infiltration BMP Design: The Elmer Avenue (Sun Valley, CA) Demonstration Project Edward Belden : Los Angeles & San Gabriel Rivers Watershed Council; Martin Sponberg : AMEC Geomatrix, Inc	Designing an Automated Regional Water Quality Monitoring System - Los Angeles County Flood Control District Oliver Galang : Los Angeles County Flood Control District; Lisa Skutecki : Brown and Caldwell	Source Control 101: Two Approaches In-Depth Approach Armand Ruby : Armand Ruby Consulting Quick Prioritization Approach Kelly Moran : TDC Environmental	Creative Solutions to Complex Stormwater Problems Include Rethinking Funding Options Michael Drennan : Weston Solutions, Inc.; Stephanie Gaines : County of San Diego
11:10 - 11:40	Public Enforcement of Contractor Compliance Jason Sprague : PermiTrack	Green Infill for Clean Stormwater Nicole David : San Francisco Estuary Institute	Development of the City of Santa Monica's Measure V Program and Assessment of Its Early Successess Rick Valte : City of Santa Monica; Hala Titus : Black & Veatch Jim Rasmus : Black & Veatch	Implementing True Source Control – Interactive Example of Identifying Pollutant Sources and Control Strategies Panel Moderator, Scott Taylor : RBF Consulting; Panel, Fred Krieger : Consultant; Kelly Moran : TDC Environmental; Armand Ruby : Armand Ruby Consulting	Los Angeles County Flood Control District's Innovative Decision Support System for Complex Urban Runoff and Stormwater Management Youn Sim : Los Angeles County Flood Control District
Alternate	Contractual Issues, Change Order Growing Pains and Solutions to Reduce the Immediate Financial Impacts of the New Construction General Permit Shawn Hagerty : Best Best & Krieger; Andre Monette : Best Best & Krieger	City of Fremont Tree Well Filter Evaluation Project Paul Niemuth : City of Fremont; Shannan Young : City of Fremont	Toxicity Identification Evaluations in Southern California Stormwater: Understanding the Role of Pyrethroid Impacts in the Receiving Environment John Rudolph : Nautilus Environmental		Southern California College Water Reuse Feasibility Study Daniel Apt : RBF Consulting; Jeremy Hohnbaum : RBF Consulting
11:40 - 12:00		EXHIBITOR FOCUS (Celebrity EFGH)			
12:00 - 1:30		LUNCH AND CASQA AWARDS PROGRAM (Ambassador 1-4)			

## Keynote Speaker: Tim Moore, Risk Sciences

Tim Moore founded Risk Sciences in 1986. Although based in Nashville, Tennessee, he has been working on water quality issues in California for nearly 25 years. His firm specializes in developing site-specific water quality criteria and NPDES permit limits for municipal, industrial and stormwater dischargers throughout the U.S. He has successfully negotiated state and federal requirements for ammonia, chlorine, heavy metals, pesticides, dissolved solids, nitrate, pathogens, sediment, nutrients, whole effluent toxicity, chemicals of emerging concern (CECs) and TMDLs.

His recent projects in California include the Storm Water Quality Standards Task Force (2003–present), San Bernardino County MS4 Stormwater Permit (2006–present), Big Bear Lake TMDL Task Force (2001–present), Lake Elsinore TMDL Task Force (2006–present), and the Emerging Contaminants Work Group (2007–2010).

His keynote speech is entitled “Storm Water Compliance: Lessons from Star Trek and the Cuban Missile Crisis.”



# CASQA Conference Agenda

Tuesday, November 2, 2010 (continued)

	TRACK A Oasis 1-4	TRACK B Oasis 5-7	TRACK C Rancho Mirage AB	TRACK D Celebrity ABC	TRACK E Celebrity D
<b>SESSION 2</b>	<b>Modifying Public Behavior</b>	<b>Scientific Advances</b>	<b>Industrial</b>	<b>True Source Control</b>	<b>Sustainable Development</b>
	<b>Moderator:</b> <b>Ziad Mazboudi,</b> <b>City of San Juan Capistrano</b>	<b>Moderator:</b> <b>Daniel Apt,</b> <b>RBF Consulting</b>	<b>Moderator: Claudio Padres,</b> <b>Riverside County Flood Control</b> <b>&amp; Water Conservation District</b>	<b>Moderator:</b> <b>Kelly Moran,</b> <b>TDC Environmental</b>	<b>Moderator:</b> <b>Lisa Austin,</b> <b>Geosyntec Consultants</b>
<b>1:30 - 2:00</b>	City Inspection Program for Private Residential, Commercial, and Industrial Structural Best Management Practices for Water Quality Control <i>Richard Haimann : GHD;</i> <i>Jim Hook : City of San Diego</i>	Implications and Applications of Nanomaterials for Stormwater Management <i>Ganesh Rajagopalan :</i> <i>Kennedy/Jenks Consultants</i>	Auto Dismantling Facilities: Junkyards or Environmentalists? <i>Martha Cowell :</i> <i>State of California Auto Dismantlers Association (SCADA)</i>	Metals TMDL Compliance – Making True Source Control the Basis of Long-term TMDL Compliance – Two Examples From the Los Angeles Region <i>Richard Watson :</i> <i>Richard Watson &amp; Associates</i>	Green and Localized Alemany Strategies – An Analysis of the Feasibility of Using LID Techniques to Alleviate Flooding in a San Francisco Watershed <i>Phoebe Grow :</i> <i>RMC Water and Environment;</i> <i>Karen Kubick : San Francisco;</i> <i>Public Utilities Commission</i>
<b>2:05 - 2:35</b>	Developing Local Water Resources Classroom Materials that Align with State Educational Science Standards <i>Daniel Rourke : Fresno Metropolitan Flood Control District</i>	Is it Safe to Swim? A new WERF-funded Study of Pathogen Discharges <i>Dustin Bambic :</i> <i>AMEC Earth &amp; Environmental</i>	Port of Long Beach Industrial Storm Water Program <i>James Vernon :</i> <i>Port of Long Beach</i>	Why True Source Control Should Be Part of Your Permit and TMDL Strategy – the Dollars and “Sense” of Source Control <i>David Pohl : Weston Solutions</i>	Rainwater Harvesting Pilot Project Demonstrates Capture and Reuse of Roof Runoff in Urbanized Los Angeles <i>Catherine Tyrrell : Malcolm Pirnie;</i> <i>Wing Tam : City of Los Angeles</i>
<b>2:40 - 3:10</b>	SB 310 and other Emerging Approaches to Revenue for Stormwater Management <i>John Bliss : SCI Consulting Group;</i> <i>Thomas Brightbill : SCI Consulting Group</i>	Evaluation of Construction Site Erosion and Sediment Control Best Management Practices to Meet Total Maximum Daily Load Requirements <i>Mark Grey : Construction Industry Coalition on Water Quality</i>	Stormwater Compliance Challenges at Industrial Sites <i>Matthew Lentz : AMEC Geomatrix</i>	Integrating True Source Control into TMDLs and NPDES Permits – the Bay Area Experience <i>Geoff Brosseau : BASMAA</i>	New Trends in 401 Permitting: The San Marcos Creek Specific Plan Master Water Quality Technical Report <i>Erica Ryan : City of San Marcos</i>
<b>Alternate</b>	Reduction in Point Source Pollution Through a Robust Enforcement and Investigation Program <i>M Joan Brackin : City of San Diego</i>	Stream Susceptibility Assessment System (SSAS) – A Tool for Assessing the Impacts and Mitigation for Urbanization on Stream Systems <i>Chris Bowles : cbec, inc., eco engineering;</i> <i>Eric Berntsen : State Water Resources Control Board</i>	Industrial Stormwater Management in California <i>Claire Tonry : StormwaterRx LLC</i>		
<b>3:10 - 3:45 BREAK (Celebrity EFGH)</b>					
<b>SESSION 3</b>	<b>Regulations, Permits &amp; Policies</b>	<b>Scientific Advances</b>	<b>Stormwater Treatment</b>	<b>Program Assessment</b>	<b>Sustainable Development</b>
	<b>Moderator: Gerhardt Hubner,</b> <b>Ventura County</b>	<b>Moderator:</b> <b>Mark Grey, CICWQ</b>	<b>Moderator:</b> <b>Jill Bicknell, EOA</b>	<b>Moderator:</b> <b>Scott McGowen, Caltrans</b>	<b>Moderator: Richard Boon,</b> <b>County of Orange</b>
<b>3:45 - 4:15</b>	The New TMDL Model: The “Voluntary” Lake San Marcos Project <i>Erica Ryan : City of San Marcos;</i> <i>John J. Lormon : Procopio, Cory, Hargreaves, &amp; Savitch</i>	Maximizing Use of Technology to Reduce Travel Time for Flow Weighted Composite Sampling of Stormwater <i>Bill Carey : Ventura County Watershed Protection District</i>	Santa Monica Bay Beaches Bacteria TMDL Implementation for Jurisdictional Groups 5 and 6: Structural BMP Feasibility and Effectiveness Evaluation <i>Julie Stephenson :</i> <i>Geosyntec Consultants</i>	Source Reductions as a Focal Point of Municipal Stormwater Management <i>Jon Van Rhyn : County of San Diego ; Karen Ashby : Larry Walker Associates</i>	Stormwater Analysis for Renewable Solar Energy Sites: Compliance with New Development Stormwater Requirements <i>Anna Lantin : RBF Consulting</i>
<b>4:20 - 4:50</b>	Pimples to Dimples: A Perspective on California’s Stormwater Regulatory Landscape and its Quest for a More Sustainable Hydrology <i>Greg Gearheart : California State Water Resources Control Board</i>	A Geographic Information System (GIS)-Based Assessment of Nutrient Sources and Transport in the Rainbow Creek Watershed <i>Sheri Dister : Weston Solutions, Inc.;</i> <i>Scott Norris : County of San Diego</i>	Hermosa Strand Infiltration Trench: Alternative to Low Flow Diversions <i>Kathleen McGowan : Consulting Environmental Engineer;</i> <i>Frank Senteno : City of Hermosa Beach</i>	Water Quality Monitoring in Downtown San Diego <i>Ruth Kolb : City of San Diego</i>	LID Retrofit Pilot Project Captures Roof Runoff in Urbanized Los Angeles <i>Vik Bapna : California Watershed Engineering;</i> <i>Wing Tam : City of Los Angeles</i>
<b>4:55 - 5:25</b>	A BMP Tool Box for Reducing PCBs and Hg in Municipal Stormwater <i>Lester McKee : San Francisco Estuary Institute;</i> <i>Peter Mangarella : Geosyntec</i>	Effects of Southern California Wildfires on Storm Water Contaminant Runoff <i>Eric Stein : Southern California Coastal Water Research Project</i> <i>Jeff Brown : Southern California Coastal Water Research Project</i>	Bacteria TMDL Project Implementation: Key Experiences from the City of Los Angeles Westchester Stormwater BMP Project <i>Ken Susilo : Geosyntec Consultants;</i> <i>Wing Tam : City of Los Angeles</i>	Beyond Inspections- Evaluating Properties and Businesses <i>Cherlyn Cac : City of San Diego</i> <i>Mikhail Ogawa : MOE</i>	Quantifying Hydromodification Impacts and Developing Mitigation Using a Four Factor Approach <i>Judd Goodman : Geosyntec Consultants</i>
<b>Alternate</b>	Prioritizing Bacteria Sources, Management Areas and Effective BMPs – The Newport Bay Experience <i>Chris Sommers : EOA Inc.;</i> <i>Amanda Carr : County of Orange</i>	Santa Monica Bay Beaches Bacteria TMDL Implementation for Jurisdictional Groups 5 and 6: Dry Weather Source Characterization <i>Megan Patterson : Geosyntec Consultants</i>	Cost Analysis Study – TMDL Compliance Through Engineered Solutions <i>Anthony Cotts : Weston Solutions</i> <i>Gene Matter : City of San Diego</i>	City-Wide Assessment of Synthetic Pyrethroids in the City of San Diego <i>Dave Renfrew : Weston Solutions, Inc.</i> <i>Ruth Kolb : City of San Diego</i>	
<b>5:30 - 7:30 EXHIBITOR RECEPTION (Celebrity EFGH)</b>					



# CASQA Conference Agenda

Wednesday, November 3, 2010

<b>7:30a - 12:00p</b>					
<b>REGISTRATION DESK</b>					
<b>8:00a - 1:30p</b>					
<b>EXHIBITS</b>					
	<b>TRACK A</b> Oasis 1-4	<b>TRACK B</b> Oasis 5-7	<b>TRACK C</b> Rancho Mirage AB	<b>TRACK D</b> Celebrity ABC	<b>TRACK E</b> Celebrity D
<b>SESSION 4</b>	<b>Construction</b>	<b>Scientific Advances</b>	<b>Stormwater Treatment</b>	<b>Program Assessment</b>	<b>Sustainable Development</b>
	<b>Moderator:</b> <b>Scott Taylor,</b> <b>RBF Consulting</b>	<b>Moderator: Arlene Chun,</b> <b>Riverside County Flood Control</b> <b>&amp; Water Conservation District</b>	<b>Moderator:</b> <b>Rebecca Winer-Skonovd,</b> <b>LWA</b>	<b>Moderator:</b> <b>Karen Ashby,</b> <b>LWA</b>	<b>Moderator:</b> <b>Lisa Austin,</b> <b>Geosyntec Consultants</b>
<b>8:35 - 9:05</b>	Will Conventional BMPs Meet NAL/NELs? A Decision Support Tool for BMP Selection <i>Brian Currier : Office of Water Programs, Sacramento State University</i>	The Natural (and Unnatural) World of Enterococci in Storm Drains <i>Gretel Roberts : Weston Solutions; Ruth Kolb : City of San Diego</i>	Hidden Treasure of Garvanza – Facility to Capture, Treat, Infiltrate, and Reuse Stormwater <i>Vik Bapna : California Watershed Engineering</i>	Chollas Creek Mobile Trash Collection: How do We Stop Illegal Dumping? <i>Stephanie Bracci : City of San Diego</i>	Low Impact Development Design Guidance for the City of San Diego <i>Sumer Hasenin : City of San Diego; Jason Wright : Tetra Tech</i>
<b>9:10 - 9:40</b>	An Overview of Active Treatment Systems: Applications, Design, Operations, and Costs <i>Joe Gannon : Clear Creek Systems, Inc.</i>	Pyrethroid Analysis in Field Samples: Measuring Nanograms per Liter in Matrix <i>Peter Halpin : Caltest Analytical Laboratory</i>	Innovative Multistage Stormwater Treatment in High Profile Regulatory Setting <i>Bronwyn Kelly : MWH Americas; David Collins : MWH Americas</i>	Implementation of a Phase II Small MS4 Desert Community Annual Program Effectiveness Assessment <i>Jason Pereira : California Watershed Engineering; Dan K. Ilkay : San Bernardino County</i>	Southern California's First Approved Hydromodification Management Plan <i>Eric Mosolgo : Brown and Caldwell; Sara Agahi : County of San Diego</i>
<b>9:45 - 10:15</b>	Active Treatment Systems <i>Patrick Schwer : Brown and Caldwell</i>	The BASMAA Regional Monitoring Coalition – A New Receiving Waters Monitoring Collaborative in the San Francisco Bay Area <i>Chris Sommers : EOA Inc.; Arleen Feng : Alameda Countywide Clean Water Program</i>	Forester Creek Restoration: Achieving Multiple Benefits in an Urban Stream <i>John Quenzer : D-Max Engineering, Inc.; Julie Procopio : City of Santee</i>	Storm Water Strategic Business Planning Using the Principles of Asset Management – A New Way of Planning for the Future <i>Ed Othmer : URS Corporation; Drew Kleis : City of San Diego</i>	Feasibility of Stormwater Harvesting in California <i>Richard Lucera : RBF Consulting</i>
<b>Alternate</b>	Lessons Learned from the Front <i>Shaun Flater : Whitson Contracting and Management; Wayne Rosenbaum : Foley &amp; Lardner LLP</i>	GIS Hydromodification Susceptibility Mapping/Analysis for Watershed Planning <i>Bruce Phillips : PACE</i>			
<b>10:15 - 10:40</b>					
<b>BREAK (Celebrity EFGH)</b>					
<b>SESSION 5</b>	<b>Regulations, Permits &amp; Policies</b>	<b>Scientific Advances</b>	<b>Stormwater Treatment</b>	<b>Bioassessment</b>	<b>Sustainable Development</b>
	<b>Moderator: Kevin McGillicuddy,</b> <b>Roscoe Moss Company</b>	<b>Moderator:</b> <b>Anna Lantin, RBF Consulting</b>	<b>Moderator:</b> <b>Daniel Apt, RBF Consulting</b>	<b>Moderator:</b> <b>Rebecca Winer-Skonovd, LWA</b>	<b>Moderator:</b> <b>Richard Watson, RWA</b>
<b>10:40 - 11:10</b>	Better Metals TMDLs through Development of Metals Translators using Site-Specific Data <i>Marty Stevenson : Kinetic Laboratories, Inc.</i>	Identifying Sources of Toxicity to Hyalella in the Santa Margarita River Watershed <i>Matt Rich : MACTEC Engineering and Consulting, Inc.</i>	Designing an Effective Sediment Containment System <i>Jerald S. Ffield : HydroDynamics Incorporated</i>	Collaborative Bioassessment of Streams in Southern California: The Regional Program of the Stormwater Monitoring Coalition <i>Raphael D. Mazar : Southern California Coastal Water Research Program</i>	Importance of Verifying Soil Types in LID Implementation - Accuracy of Reported USDA NRCS Hydrologic Soil Group in Urbanized Areas of Los Angeles County <i>Jason Wright : Tetra Tech; Steve Carter : Tetra Tech</i>
<b>11:15 - 11:45</b>	Bacterial Indicator TMDL Compliance Activities in the Middle Santa Ana River Watershed <i>Richard Meyerhoff : CDM</i>	How Rapid Methods For Measuring Indicator Bacteria Will Change Monitoring <i>Kenneth Schiff : Southern California Coastal Water Research Project</i>	Baseline Trash Loading Estimates from MS4s within Santa Clara Valley <i>Paul Randall : EOA, Inc.; Chris Sommers : EOA, Inc.</i>	Limitations on the Biotic Integrity of the Benthic Macroinvertebrate Assemblages of Tecolote Creek <i>Bill Isham : Weston Solutions</i>	You've Built it Now What? Operation, Maintenance, and Functionality of Green Infrastructure for Sustainable Stormwater Management <i>Jennifer J. Walker : Watearth, Inc.</i>
<b>Alternate</b>	"Special Protections" and the Pending Ocean Plan General Exception for Areas of Special Biological Significance (ASBS) – an Update <i>Alan Waltner : Law Offices of Alan Waltner</i>	Solids and Particulate Dynamics in a Stormwater Detention Basin <i>Kelly Havens : Geosyntec Consultants; Peter Mangarella : Geosyntec Consultants</i>			
<b>11:45 - 1:15</b>					
<b>EXHIBITOR FOCUS &amp; LUNCH (Master's Plaza) – Lunch Sponsored by Bio Clean Environmental Services</b>					

## CASQA Conference Agenda

Wednesday, November 3, 2010 *(continued)*

	<b>TRACK A</b> Oasis 1-4	<b>TRACK B</b> Oasis 5-7	<b>TRACK C</b> Rancho Mirage AB	<b>TRACK D</b> Celebrity ABC
<b>SESSION 6</b>	<b>Regulations, Permits &amp; Policies</b>	<b>Modifying Public Behavior</b>	<b>Stormwater Treatment</b>	<b>Sustainable Development</b>
	<b>Moderator: Stephanie Reyna-Hiestand, City of Tracy</b>	<b>Moderator: Anna Lantin, RBF Consulting</b>	<b>Moderator: Mark Grey, CICWQ</b>	<b>Moderator: Richard Watson, RWA</b>
<b>1:15 - 1:45</b>	Phase II General Storm Water Permit Draft Overview <i>Gerald R. Montgomery : Interwest Consulting Group; Rebecca Winer-Skonovd : Larry Walker Associates</i>	Beyond the Booth – Meaningful Assessment at Community Events <i>Jennifer Nichols Kearns : City of San Diego; Tim Graham : City of San Diego</i>	Clean Watersheds for a Clean Bay – Implementing the San Francisco Bay PCBs and Mercury TMDLs with a Focus on Urban Runoff <i>Jon Konnan : EOA, Inc.</i>	A Framework for Effective and Feasible Implementation of LID and Hydromodification Controls in Orange County <i>Richard Boon : County of County; Eric Strecker : Geosyntec Consultants (One hour presentation)</i>
<b>1:50 - 2:20</b>	Yesterday's Load: The Big Bear Lake Nutrient TMDL for the Dry Hydrologic Condition <i>Khalil P. Abusaba : Brown and Caldwell; Nancy E. Gardiner : Brown and Caldwell</i>	Using Online Media to Get Your Messages Flowing <i>Erica Hooper : S. Groner Associates, Inc.</i>	Design Storm Selection – Cost vs. Benefit <i>Martin Spongberg : AMEC Geomatrix</i>	
<b>2:25 - 2:55</b>	Monitoring Status and Findings at the La Jolla Area of Special Biological Significance, San Diego, CA <i>Dan McCoy : Weston Solutions; Steve Gruber : Weston Solutions</i>	The Message vs. the Messenger; What is Most Important? <i>Stephen Groner : S. Groner Associates, Inc.</i>	Nitrogen Selenium Management Program BMP Strategic Plan <i>Daniel Apt : RBF Consulting; Remi Candaele : RBF Consulting</i>	Low Impact Development and the Approach to Site Design <i>Cynthia Gabaldon : URS Corporation; Tom Sweet : URS Corporation</i>
<b>ALTERNATE</b>	You Want Me To Retrofit What? The Legal, Political and Engineering Challenges To Storm Water Retrofits <i>Shawn Hagerty : Best Best &amp; Krieger LLP; Joseph Caldwell : Albert A. Webb Associates</i>	Focusing Educational Outreach Towards Children K-12 Through Awareness Survey Results <i>Arne Anselm : Ventura County Watershed Protection District</i>	Ocean Water Quality Helped by Rain Water Harvesting <i>Michael Shay : City of Redondo Beach</i>	

## Think Blue is Proud to Sponsor the 2010 CASQA Conference

Think Blue has been “Rethinking Stormwater” since 2009, and is dedicated to protecting water quality through pollution prevention education. Our partnership with CASQA helps us convey the importance of protecting our local waterways in California.

*Remember that your actions today  
can make a difference tomorrow.*



CITY OF SAN DIEGO  
STORM WATER DEPARTMENT



thinkBLUE  
SAN DIEGO

[www.thinkblue.org](http://www.thinkblue.org)

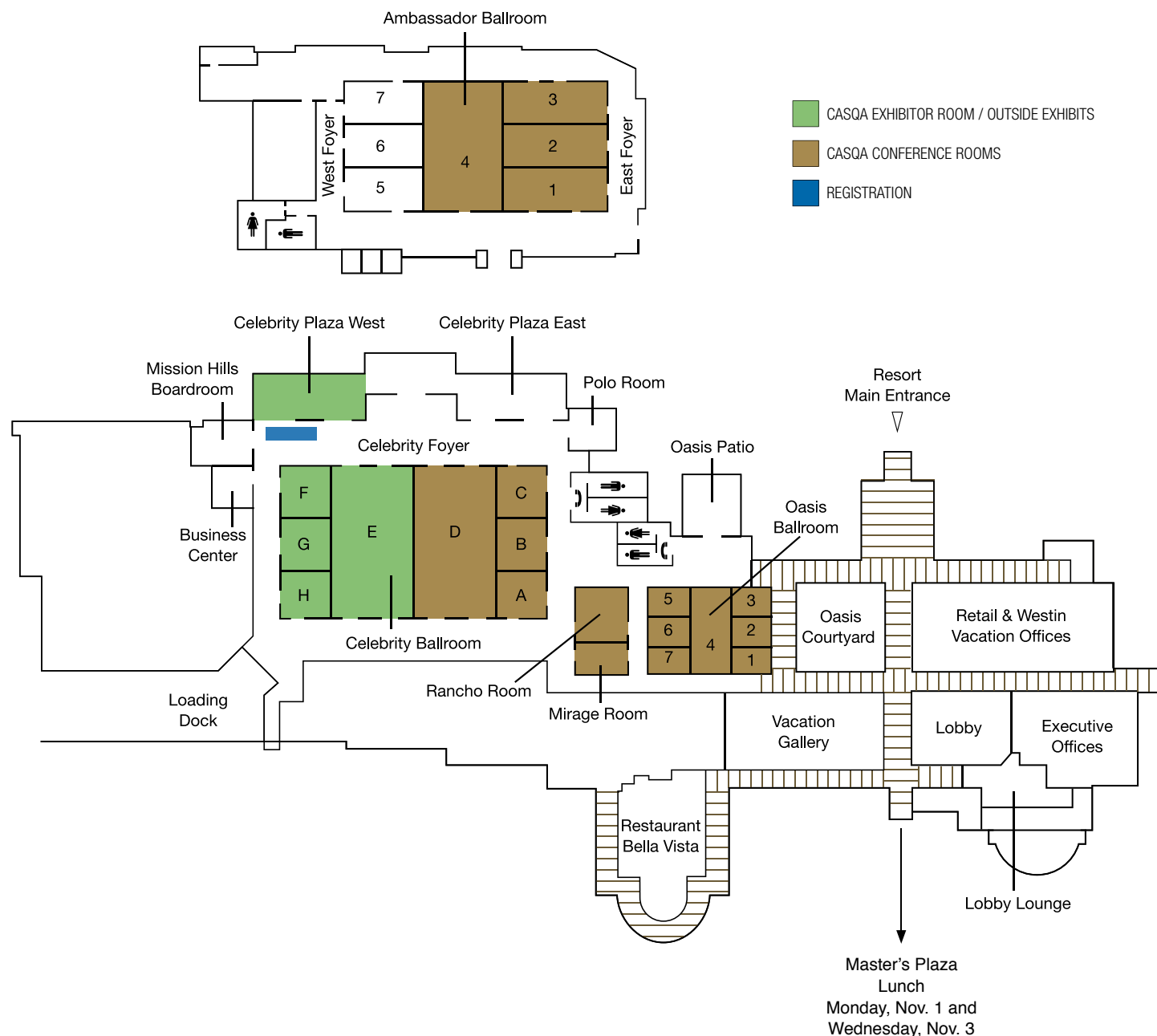


# CASQA Conference Agenda

Thursday and Friday, November 4 – 5, 2010 (Separate registration required)

CISEC SUPPLEMENTAL TRAINING Oasis 5-6		CPESC SUPPLEMENTAL TRAINING Oasis 7	
CISEC Training	CISEC Exam	CPESC Training	CPESC Exam
Thursday, November 4, 8:30 am – 4:30 pm Friday, November 5, 8:30 am – 11:00 am	Friday, November 5, 1:00 pm – 5:00 pm	Thursday, November 4, 8:30 am – 4:30 pm	Friday, November 5, 8:30 am – 12:30 pm

## Conference Room and Hotel Map



# CASQA Conference Exhibitor Layout

Celebrity Ballrooms EFGH

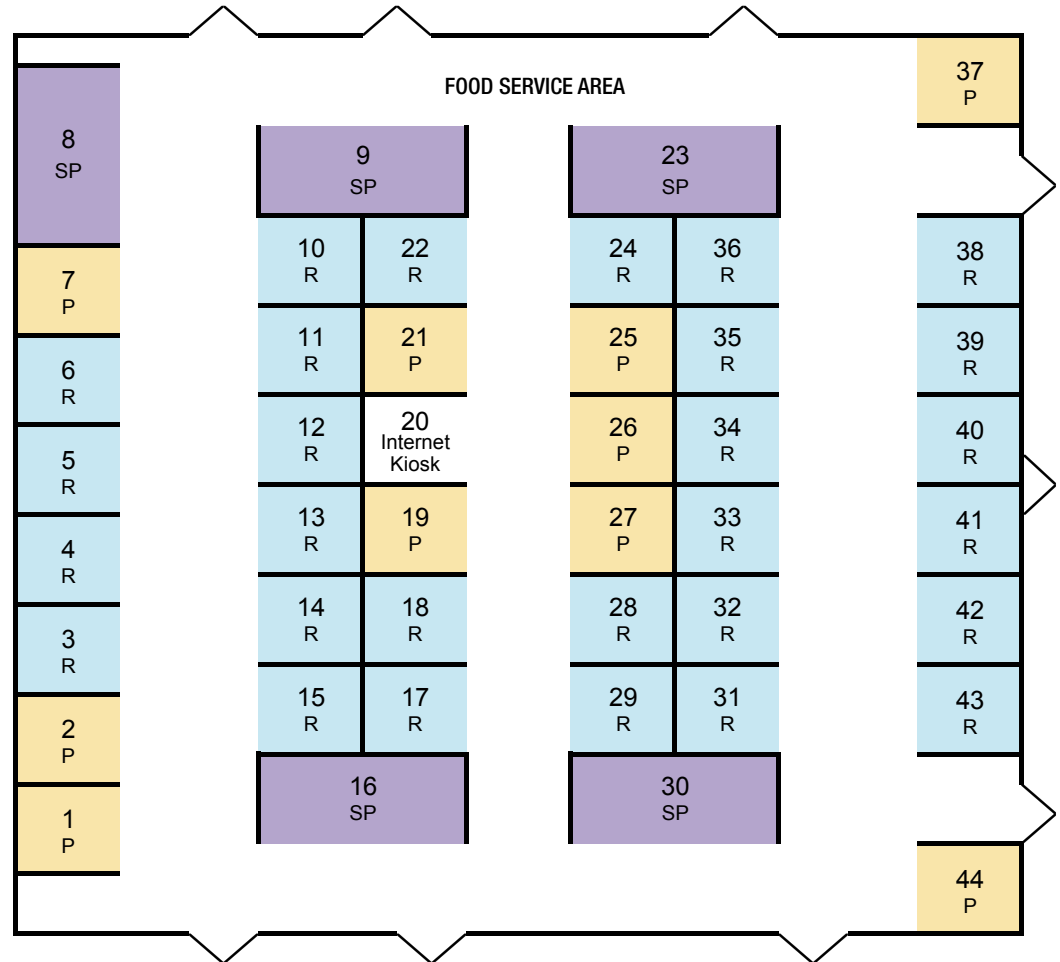
## Get Rewarded for Visiting These Exhibitors

Simply visit 5 of our exhibitors, talk with them about their products and services and they will sign the prize drawing card provided with your conference registration materials. You will then be eligible for some exceptional prizes including:

- Gift certificates valued anywhere between \$25 - \$100; and
- Gifts such as golf balls, shirts, and/or gift bags

Completed drawing cards must be turned in to the registration desk by 11:00 a.m. on Wednesday, November 3rd and the drawing will start in Celebrity EFGH at 11:45 a.m. of the same morning.

*You must be present to win – so don't miss out!*



ENTRANCE FROM CELEBRITY FOYER

- SUPER PREMIUM EXHIBITOR
- PREMIUM EXHIBITOR
- REGULAR EXHIBITOR

Please refer to the Exhibitor Directory on the following pages.

## SUPER PREMIUM EXHIBITORS



Riverside County  
Stormwater Program





## CASQA Conference Exhibitors

BOOTH	EXHIBITOR	CONTACT	ADDRESS / PHONE	WEBSITE
1	MACTEC	Nathan Schaedler	9177 Sky Park Court, Suite A, San Diego, CA 92123 Phone (858) 278-3600	<a href="http://www.mactec.com">www.mactec.com</a>
2	RBF Consulting	Anna Lantin	14725 Alton Parkway, Irvine, CA 92618 Phone (949) 472-3505	<a href="http://www.RBF.com">www.RBF.com</a>
3	PACE	Angela Collopy	17520 Newhope Street, Suite 200, Fountain Valley, CA 92708 Phone (714) 481-7300	<a href="http://www.pacewater.com">www.pacewater.com</a>
4	REM Inc.	Bob Marchant	2110 S. Grand Street, Santa Ana, CA 92705 Phone (714) 557-2676	<a href="http://www.remfilters.com">www.remfilters.com</a>
5	Soil Retention	Jim Engelke	2501 State Street, Carlsbad, CA 92008 Phone (760) 966-6090	<a href="http://www.soilretention.com">www.soilretention.com</a>
6	E.S. Babcock & Sons, Inc. Environmental Labs	Cyndi Moore	6100 Quail Valley Court, Riverside, CA 92507 Phone (951) 653-3351	<a href="http://www.babcocklabs.com">www.babcocklabs.com</a>
7	Filterra Bioretention Systems	Will Harris	34428 Yucaipa Blvd., Suite 312, Yucaipa, CA 92399 Phone (877) 345-1450	<a href="http://www.filterra.com">www.filterra.com</a>
8	Riverside County Stormwater Program	Claudio Padres	1995 Market Street, Riverside, CA 92501 Phone (951) 955-8602	<a href="http://www.rcflood.org">www.rcflood.org</a>
9	KriStar Enterprises, Inc.	Michelle Dunlop	360 Sutton Place, Santa Rosa, CA 95407 Phone (800) 579-8819	<a href="http://www.kristar.com">www.kristar.com</a>
10	Total Erosion Control, Inc.	Craig Kolodge	380 S. Melrose Place, Suite 203, Vista, CA 92081 Phone (760) 429-4041	<a href="http://www.totalerosioncontrolinc.com">www.totalerosioncontrolinc.com</a>
11	Sequoia Scientific, Inc.	Ole Mikkelsen	2700 Richards Rd., Suite 107, Bellevue, WA 98005 Phone (425) 641-0944	<a href="http://www.sequoiasci.com">www.sequoiasci.com</a>
12	Stormwater Magazine	Ron Guilbault	P.O. Box 3100, Santa Barbara, CA 93130 Phone (805) 682-1300	<a href="http://www.stormh2o.com">www.stormh2o.com</a>
13	Roscoe Moss Company	Kevin McGillicuddy	4360 Worth Street, Los Angeles, CA 90063 Phone (323) 263-4111	<a href="http://www.roscoemoss.com">www.roscoemoss.com</a>
14	CDM	Don Schroeder	9220 Cleveland Ave., Suite 100 Rancho Cucamonga, CA 91730 Phone (909) 579-3500	<a href="http://www.cdm.com">www.cdm.com</a>
15	cbec, inc. eco engineering	Chris Bowles	1255 Starboard Dr., Suite B West Sacramento CA 95691 Phone (916) 231-6052	<a href="http://cbecoeng.com">http://cbecoeng.com</a>
16	CONTECH Construction Products, Inc.	Vaikko Allen	3777 Long Beach Boulevard, Suite 400 Long Beach, CA 90807 Phone (562) 733-0733	<a href="http://www.contech-cpi.com">www.contech-cpi.com</a>
17	StormTrap	Tyler Keegan	2495 W. Bungalow Road, Morris, IL 60450 Phone (310) 210-0029	<a href="http://www.stormtrap.com">www.stormtrap.com</a>
18	Orco Block Company	Juan Tejeda	11100 Beach Blvd., Stanton, CA 90680 Phone (714) 932-7120	<a href="http://www.orco.com">www.orco.com</a>
19	Coanda, Inc.	Cynthia Esmond	3943 Irvine Blvd. #327, Irvine, CA 92602 Phone (714) 389-2113	<a href="http://www.coanda.com">www.coanda.com</a>
20	Internet Kiosk			
21	Advanced Drainage Systems, Inc.	Jeff Pierce	754 Dorothy Anna Drive, Banning, CA 92220 Phone (951) 796-2048	<a href="http://www.ads-pipe.com">www.ads-pipe.com</a>
22	Storm Chamber	Bob Maestro	P.O. Box 672, Occoquan, VA 22125 Phone (703) 492-0686	<a href="http://www.stormchambers.com">www.stormchambers.com</a>

## CASQA Conference Exhibitors

(continued)

BOOTH	EXHIBITOR	CONTACT	ADDRESS / PHONE	WEBSITE
23	Bio Clean Environmental Services, Inc.	Janet Kent	P.O. Box 869, Oceanside, CA 90249 Phone (760) 433-7640	<a href="http://www.biocleanenvironmental.net">www.biocleanenvironmental.net</a>
24	Cemex Rinker Materials	Jim Johnston	23200 Temescal Canyon Road, Corona, CA 92883 Phone (909) 322-7604	<a href="http://www.rinkerstormceptor.com">www.rinkerstormceptor.com</a>
25	Southern California Concrete Producers	Larry Maes	1811 Fair Oaks Avenue, South Pasadena, CA 91030 Phone (626) 441-3107	<a href="http://www.sccpconcrete.com">www.sccpconcrete.com</a>
26	Acker-Stone	Mike Millard	13296 Temescal Canyon Road, Corona, CA 92883 Phone (949) 241-6669	<a href="http://www.ackerstone.com">www.ackerstone.com</a>
27	Water Tectonics	TJ Mothersbaugh	802 134th Street SW, Suite 110, Everett, WA 98204 Phone (866) 402-2298	<a href="http://www.watertectonics.com">www.watertectonics.com</a>
28	Malcolm Pirnie, Inc.	Catherine Tyrrell	888 West 6th Street, Third Floor Los Angeles, CA 90017 Phone (213) 327-1641	<a href="http://www.pirnie.com">www.pirnie.com</a>
29	SCI Consulting Group	John Bliss	4745 Mangels Blvd., Fairfield, CA 94534 Phone (707) 430-4300	<a href="http://www.sci-cg.com">www.sci-cg.com</a>
30				
31	Utility Systems Science and Software, Inc.	Mark Serres	2101 E. 4th Street, Suite 130A, Santa Ana, CA 92705 Phone (714) 542-1004	<a href="http://www.uscubed.com">www.uscubed.com</a>
32	United Storm Water, Inc.	Lydia Perry	14000 E. Valley Blvd., Suite B City of Industry, CA 91746 Phone (626) 890-7078	<a href="http://www.unitedstormwater.com">www.unitedstormwater.com</a>
33	UltraTech International, Inc.	Mario Cruz	11542 Davis Creek Court, Jacksonville, FL 32256 Phone (904) 292-1611	<a href="http://www.stormwaterproducts.com">www.stormwaterproducts.com</a>
34	Campbell Scientific, Inc.	Blake Farnsworth	815 West 1800 North, Logan, UT 84321-1784 Phone (435) 755-0774	<a href="http://www.campbellsci.com">www.campbellsci.com</a>
35	Tetra Tech	Juli Beth Hinds	1230 Columbia Street, Suite 1000 San Diego, CA 92101 Phone (619) 696-8968	<a href="http://www.tetrattech.com">www.tetrattech.com</a>
36	Imbrium Systems Corp.	Laddie C. Fromelius	24518 Bliss Canyon, San Antonio, TX 78260 Phone (210) 269-8321	<a href="http://www.imbriumsystems.com">www.imbriumsystems.com</a>
37	Jensen Precast	Bryan Bach	825 Steneri Way, Sparks, NV 89431 Phone (877) 649-0095	<a href="http://www.jensenprecast.com">www.jensenprecast.com</a>
38	Angelus Block Co., Inc.	David Quinn	3435 S. Riverside Ave., Rialto, CA 92316 Phone (951) 328-9115	<a href="http://www.angelusblock.com">www.angelusblock.com</a>
39	PermiTrack	Jason Sprague	100 North 6th Street, Suite 710C Minneapolis, MN 55403 Phone (612) 217-4420	<a href="http://www.myNPDESpermit.com">www.myNPDESpermit.com</a>
40	Reed & Graham, Inc.	Bruce Adams	26 Light Sky Court, Sacramento, CA 95828 Phone (916) 381-9900	<a href="http://www.rginc.com/geo">www.rginc.com/geo</a>
41	Marco Equipment Company	Randy Champion	130 Atlantic Street, Pomona, CA 91768 Phone (909) 594-9493	<a href="http://www.marcoequipment.com">www.marcoequipment.com</a>
42	Clearwater Solutions, Inc.	Joe Arthur	P.O. Box 2078, Vista, CA 92085-2078 Phone (800) 758-8817	<a href="http://www.clearwaterbmp.com">www.clearwaterbmp.com</a>
43	C.I.Agent StormWater Solutions	Jamie Aderhold	11760 Commonwealth Drive, Louisville, KY 40299 Phone (562) 619-8708	<a href="http://www.ciagent-stormwater.com">www.ciagent-stormwater.com</a>
44	Haz Mat Response Tech.	Russ Stagg	4626 Santa Fe Street, San Diego, CA 92109 Phone (858) 274-4585	<a href="http://www.rubberizer.com">www.rubberizer.com</a>



## LARRY WALKER ASSOCIATES

LARRY  
WALKER



ASSOCIATES

Science. Policy.  
Solutions.

### Environmental engineering and consulting.

Providing innovative water  
quality solutions throughout  
California for over 30 years.

#### Home Office

Davis, CA | 530.753.6400

with regional offices  
in Oakland, Santa Monica,  
San Jose and Ventura

[www.lwa.com](http://www.lwa.com)

## Best known in water law



Best Best & Krieger provides advisory and  
litigation services on water quality issues  
and assists public agencies and private  
clients in the obtaining of and compliance  
with NPDES permits.

Offices throughout California  
[www.BBKlaw.com](http://www.BBKlaw.com)

**BBK**  
BEST BEST & KRIEGER  
ATTORNEYS AT LAW

### SERVICES:

#### Stormwater Management Programs – Municipal, Industrial, and Construction

- ◆ Development, Implementation, and Assessment
- ◆ Training
- ◆ Monitoring
- ◆ Source Investigations

#### Stormwater & Surface Water Science, Planning, and Engineering

- ◆ Low Impact Development BMP Design
- ◆ Sustainable Site Development Planning
- ◆ BMP Pilot Studies
- ◆ Hydrologic & Hydraulic Analyses
- ◆ Emerging Pollutants of Concern
- ◆ Hydromodification Controls

#### Permitting

- ◆ CWA NPDES, Porter-Cologne WDRs, CWA § 404,  
CWA § 401, CDFG §1600

**URS**  
[www.urscorp.com](http://www.urscorp.com)



### URS – 16 California Offices; 300 Offices Nationwide

#### CA Office Contacts – Stormwater/Water Quality

Oakland – 510.893.3600 – Terry Cooke

Sacramento – 916.679.2000 – Jeff Herrin

San Francisco – 415.547.2500 – Tom Sweet

Ontario – 909.980.4000 – Cynthia Gabaldon

San Diego – 619.294.9400 – Ed Othmer

Santa Ana – 714.835.6886 – Barb Klos



www.imbriumsystems.com  
1.888.279.8826

## #1 Choice in Stormwater Management

Imbrium Systems partners with **Hanes Geo Components** for sales representation of the **Jellyfish®** filter system, **Sorbtive™MEDIA**, and **Sorbtive™FILTER**.

Stormwater filtration with integrated pretreatment

**Jellyfish®**



Dissolved phosphorus treatment

**SorbtiveMEDIA**



TSS and dissolved pollutant treatment

**SorbtiveFILTER**



Imbrium Systems designs and develops stormwater treatment technologies to protect water resources from pollutants. Imbrium has a strong record for innovation in the industry as the creator of the Stormceptor® oil and sediment separator with over 32,425 installations worldwide.



Please visit us  
at booth #36



# VISIONARY



HDR partners with clients to balance the needs of the built and natural environments, whether it's designing a facility for endangered species or evaluating the safety of a dam. HDR offers clients the best possible economic, social and environmental value by delivering integrated sustainable solutions.

www.hdrinc.com

**HDR**

ONE COMPANY | Many Solutions®

## Lower your Impact with CONTECH.

Infiltration • Biofiltration • Permeable Pavement • Filtration



CDs pretreatment  
ChamberMaxx



UrbanGreen BioFilter



UrbanGreen Grass  
Gravel Paver



Stormwater Management  
CatchBasin StormFilter

CONTECH is dedicated to helping you minimize your site's environmental footprint. Call on our expert technical staff to assist you in exploring low impact development options on even the toughest sites. Whether its infiltration, biofiltration, detention and flow control, rainwater harvesting, filtration, or earth stabilization, we've got you covered.

Leave a greener footprint on your next site . Find out more at [www.contech-cpi.com/green](http://www.contech-cpi.com/green).

**CONTECH®**  
Knowledge. Solutions. Service.



Build it. Plan it. Solve it.  
Develop it. Permit it.  
Defend it. Protect it.  
Change it. Win it.

#### MAKING IT HAPPEN

No matter what your *it* is, Nossaman gets results. Rely on a law firm that understands your business and delivers effective solutions. You define success. Together, we make it happen.



Working closely with agencies and communities to provide innovative, comprehensive and sustainable stormwater solutions

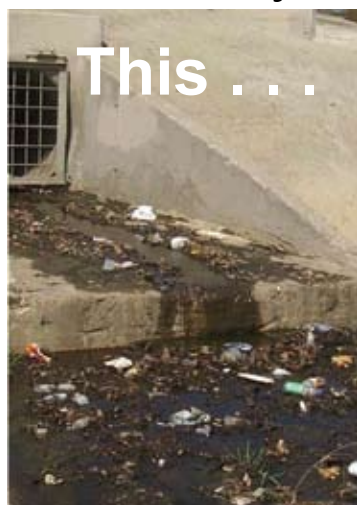


- Engineering / Science
- Outreach / Education
- Stormwater Quality
- Structural BMP Design
- NPDES Permit Compliance
- Construction Stormwater Compliance
- Regional Flood Protection
- Watershed / Stream Corridor Planning
- Urban Drainage Facilities / Master Planning

Offices located throughout  
California, Arizona and Nevada  
800.479.3808

**www.RBF.com**

In Just Days Go From. . .



1384 Pompton Ave. - Suite 2  
Cedar Grove, NJ 07009  
973.237.9099  
Fax: 973.237.0744  
**1-800.741.9486**

### Fresh Creek Technologies, Inc.

We have a variety of **Netting TrashTrap<sup>®</sup>** solutions for Stormwater, CSO and urban runoff with the same simple result - trash and debris out of your waterways. **Get the details at: [www.freshcreek.com](http://www.freshcreek.com)**

Copyright 2010, Fresh Creek Technologies, Inc.



## Riverside County Stormwater Program

[www.rcflood.org/npdes](http://www.rcflood.org/npdes)

# CONNECT THE DROPS

## KNOW WHERE YOUR RUNOFF GOES



Remember The Ocean Begins at Your Front Door

[www.ocwatersheds.com](http://www.ocwatersheds.com)

listen.think.deliver.®

*CDM is proud to be a sponsor of the CASQA 2010 Conference.*

**CDM**  
[www.cdm.com](http://www.cdm.com)

Eight offices throughout California and more than 120 worldwide.



**COANDA**  
The Effect Matters

VISIT BOOTH 19

### FULL CAPTURE SCREENS



CURB INLETS

- Maintenance-free 100% stainless steel construction
- Designed for full treatment at peak flow
- Removes all debris larger than fine sand
- Captures nutrients, metals and organic matter with the debris
- Self-cleaning screen does not clog and will not fail
- Easy access for debris removal from vault
- No moving parts



DOWNSPOUTS



CHANNEL SCREENS



Patents Issued & Pending

**COANDA, Inc.**

3943 Irvine Blvd. #327 Irvine, CA 92602  
(714) 389-2113 [www.COANDA.com](http://www.COANDA.com)



**CH2MHILL**



*Dominguez Gap Wetlands, Long Beach, CA*

### **Creating Innovative and Sustainable Stormwater Solutions for Our Clients**

With more than ten offices in California, our engineers, scientists, and planners work collaboratively to address the needs of our clients including:

- Sustainable Development
- Stormwater Quality
- TMDL Studies / Implementation
- LID Studies / Design
- BMP Design

**CH2MHILL.com**

© 2010 CH2M HILL  
WB091410193406SCO

## **BURHENN & GEST LLP**

624 South Grand Avenue, Suite 2200

Los Angeles, CA 90017

(213) 629-8787 (Howard Gest)

hgest@burhenngest.com

(213) 629-8788 (David Burhenn)

dburhenn@burhenngest.com

**SERVING PUBLIC AND PRIVATE  
CLIENTS WITH WATER QUALITY AND  
OTHER ENVIRONMENTAL  
LEGAL NEEDS SINCE 2000**

# **Pervious Concrete**

**When it Rains, It Drains.**



**sccpconcrete.com**

**AEI-CASC**  
CONSULTING

*Relieving  
Your Headaches*



New Permits  
+  
New Requirements  
=  
More Work (with fewer staff!)

**AEI-CASC can help.**

Offices throughout California  
Corporate Office: (909) 783-0101 / Email Amy Ardis at: aardis@aei-casc.com



## CASQA Conference Subcommittee Members

CASQA would like to thank the Conference Subcommittee members for coordinating this year's conference.

### **Conference Chair**

Jason Uhley

### **Accommodations**

Lindsay Olson/Event Architects

### **A/V Coordinators**

Jamie Aderhold

Jason Lawrence/Advanced Media Works

### **Awards Coordinator**

Jill Bicknell

### **CEU Units Coordinator**

Daniel Apt

### **Exhibitor Coordinator**

Karen Ashby

### **Hospitality Coordinator**

Jeff Endicott

### **Meals Coordinator**

Kristina Schneider

### **Moderator Coordinator**

Anna Lantin

### **Pre-Conference Workshop Coordinators**

Richard Watson

Daniel Apt

Marvin Sachse

Bruce Lokkesmoe

Andre Monette

### **Program Coordinators**

Bill Flores

Kevin McGillicuddy

### **Promotions Coordinator**

Chris Crompton

### **Registration Coordinators**

Lindsay Olson/Event Architects

April Eades/Event Architects

Monica Espinoza

### **Sponsorship Coordinator**

Matt Lentz

### **CASQA Executive Director**

Geoff Brosseau

### **CASQA Treasurer**

Mark Wills

### **Members at large**

Daniel Rourke

Dave Sluga

Tom Lawrence

Larry Maes

Sandy Matthews

Stephanie Reyna

Chandra Thomas

Scott Taylor

Gene Estrada

Jennifer Crain

Christina Olsen

Stephanie Reyna

**CASQA looks forward to seeing attendees again at the 2011 Conference.**



**California Stormwater  
Quality Association**

P.O. Box 2105

Menlo Park, California

94026-2105