

# Solving the Stormwater Compliance Puzzle





Improving the quality of  
California waters is our passion.

Carlsbad

Long Beach

Los Angeles

Oakland

Sacramento

Vallejo

Walnut Creek

Other Offices Worldwide

Sound science.  
Innovative solutions.



*Please stop by our booth during the conference to learn more about our work in Mission Bay and other water bodies throughout California.*

The California Stormwater Quality Association (CASQA) is the largest professional association dedicated to stormwater quality issues. For 23 years, CASQA has assisted municipalities, special districts, businesses, the State of California, and the United States Environmental Protection Agency in developing and implementing effective stormwater quality management programs.

The CASQA Conference is now entering its 8th year and draws over 500 stormwater professionals from California and, increasingly, from across the country. The Conference carefully balances presentations

and workshops featuring leading stormwater experts and an exposition of cutting-edge products and services with opportunities for attendees to network, socialize, and establish important professional contacts. It is the “must attend” stormwater training event for those responding to municipal, industrial, and construction NPDES stormwater permit requirements.

The 2012 CASQA Conference is being held at the Hilton San Diego at Mission Bay, 1775 E. Mission Bay Drive, San Diego, California, from November 5 – 7, 2012. This promises to be another exceptional CASQA conference.



Photos courtesy of the City of San Diego

San Diego shoreline (left); River bank in the San Diego area (right)

### About CASQA

CASQA is a non-profit professional member association dedicated to the advancement of stormwater quality management through collaboration, education and outreach, implementation guidance, regulatory review, and scientific assessment.

### Join CASQA

Regular or affiliate membership in CASQA is open to organizations and individuals in the stormwater field, whether holders of NPDES permits or not. If you are not currently a member, by joining now, you can receive substantial reductions on the upcoming conference and webcast, as well as receiving all the other benefits of membership

(newsletters, downloadable products, quarterly meetings, etc.). CASQA membership provides substantial benefits even if you are based outside California. It's the right time to be a member of the premier professional association dedicated to the advancement of stormwater quality management, science, and regulation. Join now at [www.casqa.org](http://www.casqa.org)



MONDAY, November 5, 2012

## In-Depth Workshops

CASQA will be holding ten half-day workshops (morning from 8:30 to 11:45 a.m. and afternoon from 1:30 to 5:00 p.m. Pacific Time). You can attend the workshops in person or can view the workshops via webcast.

### 1. LID: DISSECTING THE LID PUZZLE

Will examine policy considerations related to LID, including why we are doing LID, what methods are appropriate, and the use of LID as a tool for TMDL implementation and hydromodification.

### 2. CONSTRUCTION TOOLS AND TALK: CONSTRUCTION BMP PORTAL AND GROUP EXERCISE

Will focus on an overview of the California Construction General Permit, risk level determination, tasks and BMP tool box for the Qualified SWPPP Developer (QSD) and the Qualified SWPPP Practitioner (QSP). The session highlights the practical application of the CASQA Construction BMP Portal, example calculations (sediment basin and RUSLE2), and lessons for erosion and sediment control site planning through an interactive group exercise.

### 3. WHAT EVERY STORMWATER PROGRAM MANAGER “SHALL” KNOW: GUIDANCE FROM EXPERIENCED MS4 MANAGERS

Seasoned stormwater program managers will share experiences and suggestions on all aspects of permit implementation including organization, monitoring, plan check and permitting, inspection and enforcement, and public outreach and provide ideas for improving program efficiency.

### 4. INDUSTRIAL STORMWATER COMPLIANCE: KEY PROGRAM CHANGES AND NEW COMPLIANCE TOOLS

Will provide insight and training on the changes and new compliance assistance tools for the upcoming California Industrial General Permit (IGP) including new staff qualification requirements and monitoring program requirements.

### 5. LEGAL FRAMEWORK: TMDL DEVELOPMENT AND COMPLIANCE

Will feature separate panel discussions on the legal requirements for developing and adopting TMDLs in California and efforts to find alternative approaches to developing TMDLs that achieve water quality goals without the high cost and time constraints associated with traditional TMDL development.

### 6. LID: DISSECTING THE LID PUZZLE

(Continuation Of Workshop 1) Will focus on step-by-step methods for site selection and design of several LID measures from the BMP toolbox, including soil-based and vegetated BMPs, stormwater harvest and use concepts, and other emerging BMPs. Hear from experts on state-of-the-art BMP design guidance, BMP performance, and highlights of a recently released local LID manual.

7. CONSTRUCTION TOOLS AND TALK: WEATHER FORECASTS, COMMUNICATIONS, AND QSD /QSP FORUM (Continuation of Workshop 2) Will dig into effective monitoring, dealing with the inevitable changes at construction sites, effective use of forecasts, and will

end with the second annual QSD /QSP forum. The workshop and forum will provide an opportunity to earn professional development hours useful for credential renewal.

### 8. WHAT EVERY STORMWATER PROGRAM MANAGER “SHALL” KNOW: GUIDANCE FROM EXPERIENCED MS4 MANAGERS (Continuation of Workshop 3)

Will focus on how to optimize program effectiveness followed by a panel discussion with stormwater program managers and Regional Board staff who have experience working together productively and successfully.

### 9. INDUSTRIAL STORM WATER COMPLIANCE: KEY PROGRAM CHANGES AND NEW COMPLIANCE TOOLS (Continuation of Workshop 4)

Will provide an interactive session to work through the development of compliance documents and the proposed corrective action process outlined in the IGP, including pollutant source identification, selection of appropriate source and treatment controls, and background contribution.

### 10. UNRAVELING THE BACTERIA PUZZLE: CURRENT REGULATIONS AND NEW TECHNOLOGIES

Will cover the current status of bacteria regulations (particularly TMDLs) in California, provide an update on new scientific approaches, and include case studies illustrating the management strategies that several regulated agencies have taken to address them.



## Keynote Address and Technical Program

A keynote address, a Trainer of Record Forum and over 90 concurrent session presentations will provide two packed days of stormwater information. Many of the leading stormwater practitioners from California and across the nation will be participating and making presentations.

CASQA is pleased to announce Chad Pregracke, Founder & President of Living Lands & Waters as this year's keynote speaker. As the founder of America's only "industrial-strength" river cleanup organization, Chad has a compelling and funny story to tell about growing up on the Mississippi River and how his love for and experiences on the river led to his unique vision to clean it up. Chad will leave you with a clear understanding of how one person's actions can truly make a difference towards the sustainability of our world.

Concurrent sessions will follow eleven conference thematic tracks (see pages 8–14 for detailed agendas):

**1. CLEAN WATER ACT:** This track will celebrate local, regional and national accomplishments to mark the 40th anniversary of the Act and the 25th anniversary of the Water Quality Act amendments that initiated stormwater regulation and also address ongoing challenges posed by these important laws.

**2. CONSTRUCTION PERMIT:** This track will focus on lessons learned during the second year under the reissued California Construction General Permit and recent advancements in construction permits nationwide including numeric effluent limits and numeric action levels, post-construction requirements, risk assessment, sampling and monitoring, bioassessments, active treatment systems, and field compliance strategies.

**3. INDUSTRIAL PERMIT:** This track will focus on the forthcoming California General Industrial Permit reissuance and related issues including innovative stormwater compliance strategies/case studies, BMP effectiveness evaluations, integrated MS4 and industrial discharge approaches, field compliance strategies, numeric effluent limits and numeric action levels, site monitoring, and practical solutions for industries.

**4. MODIFYING PUBLIC BEHAVIOR:** This track will focus on the challenges and solutions to changing public and business behavior including public education, training, inspections, and enforcement.

**5. PROGRAM ASSESSMENT:** This track will focus on strategies to determine the effectiveness of stormwater programs including assessments of monitoring data, BMP effectiveness, effluent limits, numeric action levels, changes in polluting behaviors, and reductions in pollutant loading and also experiences from regulatory and third party audits.

**6. REGULATIONS, PERMITS AND POLICIES:** This track will focus on the latest developments in stormwater regulations, policies and permits including effluent limitations, receiving water limitations, the definitions of maximum extent practicable and water of the United States, toxicity and trash policies, ASBSs, TMDLs, basin planning issues, and 303(d) listings.

**7. SCIENTIFIC ADVANCES:** This track will focus on monitoring and the latest research into stormwater management including data collection and evaluation, pollutant source tracking, emerging pollutants, new technologies, new monitoring and assessment tools, stormwater impacts and economic assessments.



Keynote speaker,  
Chad Pregracke

Photo by Greg Boll

**8. STORMWATER TREATMENT:** This track will focus on the most recent information on BMP design and guidance including development of standard plans, case studies, treatment efficiency, facility retrofitting, regional treatment, and multi-purpose facilities.

**9. SUSTAINABLE DEVELOPMENT:** This track will focus on tools for implementing low impact development (LID) and hydromodification requirements and related issues including integrated regional or watershed planning, green streets, smart growth, and stormwater harvesting and reuse.

**10. TMDLS IN MS4 PERMITS:** This track will focus on the impact of TMDL allocations as requirements in MS4 permits including TMDL permitting approaches, allocations as effluent limits or BMP programs, case studies on implementation, and non-point sources impacting the MS4.

**11. TRUE SOURCE CONTROL:** This track will focus on ways to protect streams, lakes and the ocean by reducing, substituting or eliminating harmful products and chemicals and through systematic approaches including producer responsibility zero waste, green chemistry, pesticide registration, runoff elimination, water conservation, and multi-jurisdictional coordination.



## The City of San Diego wishes to welcome all the **2012 CASQA attendees to this year's conference.**

As Host City Sponsor, Think Blue looks forward to engaging with the other municipalities and organizations in solving the storm water compliance puzzle, and preventing pollution in California's waterways.



**thinkblue.org**

 [facebook.com/ThinkBlueSanDiego](https://facebook.com/ThinkBlueSanDiego)

CASQA would like to thank the following sponsors and advertisers for supporting the CASQA 2012 Conference.

## PLATINUM STORMWATER SUPPORTER



## HOST CITY SPONSOR



## GOLD STORMWATER STEWARDS



## SILVER STORMWATER STEWARDS



## LUNCH SPONSORS



## BREAK SPONSOR



## VENDOR RECEPTION SPONSOR



## MONDAY NIGHT NETWORKING EVENT SPONSORS



- AECOM
- AMEC
- AEI-CASC Consulting
- Brown & Caldwell
- EOA
- HDR
- URS
- Geosyntec Consultants
- The Land Stewards
- Larry Walker Associates
- Nautilus Environmental
- RBF Consulting
- Reed & Graham
- SCS Engineers
- Rick Engineering
- Weston Solutions



## IMPORTANT WATER QUALITY ANNIVERSARIES

October 18, 2012 marks the 40th anniversary of the Clean Water Act and February 4, 2012 is the 25th anniversary of the Water Quality Act that initiated stormwater quality regulation. CASQA is pleased to mark both milestone anniversaries at the Conference and has devoted a presentation track to address the accomplishments and challenges posed by these important laws. September 27, 2012 was also the 50th anniversary of the publication of Rachel Carson's "Silent Spring" that brought to light the pesticide use issues we continue to work on to this day.

Clean water is vital for our health, communities, environment and economy. We have made great progress over the last 40 years but much remains to be done. Many of the low-hanging issues have been resolved and the ones that remain are technically complex, difficult from a regulatory perspective, and increasingly costly.

Where we are heading in the next 25 to 40 years will be an important topic at the Conference.



Photos courtesy of Orange County Public Works (top left and top right), © 2006 (bottom right)

### Continuing Education Credits

Continuing Education Credits are available for attendees at the CASQA Conference in the following certifications:

- **American Institute of Certified Planners (AICP)**  
CASQA is an approved AICP Certification Maintenance (CM) Provider. The Annual Conference, including the workshops, has been submitted and is awaiting approval as a multipart event with credits available based on contact hours. AICP certified planners can record credits by logging onto their CM Log and adding the credits from the calendar.

Any issues with logging the credits should be sent to [AICPCM@planning.org](mailto:AICPCM@planning.org).

- **Certified Professional in Erosion and Sediment Control (CPESC); Certified Professional in Storm Water Quality (CPSWQ); Certified Erosion, Sediment and Stormwater Inspector (CESSWI); Certified Municipal Separate Storm Sewer Specialist (CMS4S)**  
Professional Development Units (PDUs) are available for attendance at the CASQA Conference, including the workshops. No sign-in sheets, forms, or certificates are required at the CASQA Conference.

- **California Water Environment Association (CWEA)**  
CWEA contact hours are available for attendance at the CASQA Conference, including the workshops. A CWEA contact hour verification form must be filled out by those requesting CWEA contact hours at the registration table and CASQA will issue a Certificate of Completion.

- **State Bar of California**  
Minimum Continuing Legal Education (MCLE) credits are being requested from the State Bar of California.



# LARRY WALKER ASSOCIATES



**Environmental engineering and consulting.**  
Providing innovative water quality solutions  
throughout California for 30 years.

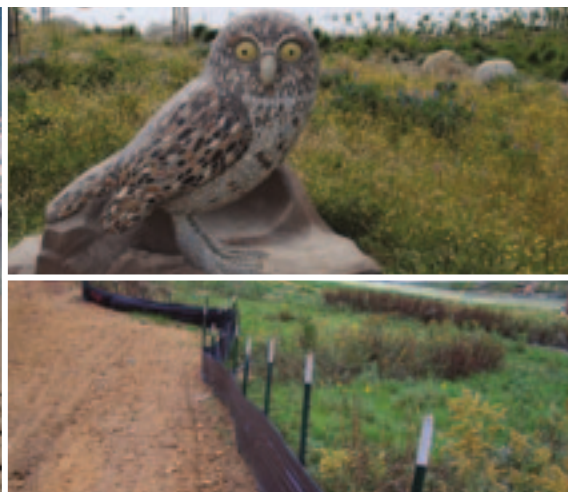
Davis 530.753.6400

Oakland, San Jose, Santa Monica, Ventura

[www.lwa.com](http://www.lwa.com)

GOLD STORMWATER STEWARD

**Working Together** to  
improve our water resources



**Geosyntec**   
consultants  
[geosyntec.com](http://geosyntec.com)

**Providing value-driven and sustainable solutions to  
the most challenging stormwater quality problems**

Municipal • Industrial  
Development • Construction

Huntington Beach • Los Angeles • Oakland • Pasadena • Portland • Riverside • Sacramento • Santa Barbara • San Francisco • San Diego • Seattle

GOLD STORMWATER STEWARD

*All workshops are available by Webcast (extra fee applies)*

7:30a - 5:30p REGISTRATION DESK (FOYER)					
12:00 - 6:00p EXHIBITS (PAVILION)					
	WORKSHOP 1 MARSEILLES/PORTOFINO	WORKSHOP 2 TERRAZZA BALLROOM	WORKSHOP 3 SORRENTO BALLROOM	WORKSHOP 4 SAN MARINO BALLROOM	WORKSHOP 5 MARBELLA/LAS PALMAS
WORKSHOP	DISSECTING THE LID PUZZLE	CONSTRUCTION TOOLS AND TALK Construction BMP Portal Group Exercise	WHAT EVERY STORMWATER PROGRAM MANAGER "SHALL" KNOW Guidance From Experienced MS4 Managers	INDUSTRIAL STORMWATER COMPLIANCE Key Program Changes	TMDL DEVELOPMENT AND COMPLIANCE
8:30 - 10:00	Welcome/Opening Remarks and Overview <i>Richard Watson : Richard Watson &amp; Associates</i>	Welcome/Opening Remarks and Overview <i>Anna Lantin : RBF Consulting</i>	Welcome/Opening Remarks and Overview <i>Daniel Apt : RBF Consulting; Sharon Gosselin : Alameda County</i>	Welcome/Opening Remarks and Overview <i>Matt Lentz : AMEC</i>	Welcome/Opening Remarks and Overview <i>Andre Monette : Best Best &amp; Kreiger LLP</i>
	Why are We Doing LID? <i>Dan Cloak : Dan Cloak Environmental Consulting</i>	Overview of Construction General Permit (CGP) <i>Scott Taylor : RBF Consulting</i>	Innovative Ideas for Funding Your Stormwater Program <i>Tom Bonigut : City of San Clemente; John Bliss : SCI Consulting Group</i>	New Industrial Permit Overview and State Water Board Expectations <i>Greg Gearheart : State Water Board</i>	The Broad Scope and Implications of Recent TMDLs in California: Legal Requirements for Development of TMDLs and Incorporation into NPDES Permits <i>David Burhenn : Burhenn &amp; Gest LLP</i>
	What Methods are Appropriate? Is the Hierarchy in Current Permits Best for Water Quality? <i>Moderator - Jason Uhley : Riverside County Flood Control and Water Conservation District</i> <i>Panel - Dale Bowyer : San Francisco Bay Regional Board; Dan Cloak : Dan Cloak Environmental Consulting; Eric Strecker : Geosyntec Consultants</i>	Example Calculations: Risk Level Determination and RUSLE2 <i>Tanya Bilezikjian : RBF Consulting</i>	Phase II Permit Monitoring <i>Ali Dunn : State Water Board</i>	The Qualified Industrial Stormwater Practitioner (QISP) <i>Laurel Wardrip : State Water Board</i>	Los Angeles River Bacteria TMDL <i>Richard Montevideo : Rutan &amp; Tucker</i> Central Valley Methylmercury TMDL <i>Stefanie Morris : Best Best &amp; Kreiger</i>
10:00 - 10:15 BREAK (FOYER)					
10:15 - 11:45	LID as a Tool for TMDL Implementation and Hydromodification <i>Moderator - Dennis Bowling : Rick Engineering</i> <i>Panel - Lisa Austin : Geosyntec Consultants; Eric Berntsen : State Water Board; Jon Konnan : EOA; David Pohl : Weston Solutions</i>	Interactive Group Exercise: Development of Erosion and Sediment Control Plans <i>Presented by: Anna Lantin; Scott Taylor; Tanya Bilezikjian; Kim Williams; Sandy Mathews</i>	Optimizing Your Stormwater Program's Efficiency Through Integration and Collaboration: Public Outreach, Plan Check and Permitting, Inspections and Enforcement, Maintenance and Operations <i>Chandra Thomas : Riverside County; Grant Sharp : County of Orange; Courtney Trask : UC Santa Cruz; Kimberly O'Connell : UC San Diego</i>	Pollutant Source Identification/ BMP Selection <i>Don Schroeder : CDM Smith</i>	The Search for Time and Resource Saving Alternative Options for Development of TMDLs: Alternatives for Development and Incorporation of TMDLs in NPDES Permits Proposed San Diego Creek Selenium TMDL <i>Mary Lynn Coffee : Nossaman LLP</i>
	Closing Remarks <i>Richard Watson : Richard Watson &amp; Associates</i>	Closing Remarks <i>Anna Lantin : RBF Consulting</i>	Closing Remarks <i>Daniel Apt : RBF Consulting; Sharon Gosselin : Alameda County</i>	How to Develop a Stormwater Pollution Prevention Plan <i>Tom Quasebarth : CDM Smith</i>	Newport Bay Watershed Selenium TMDL <i>Tim Moore : Risk Sciences</i> Lake San Marcos Nutrient TMDL <i>Jim Dodson : Law Offices of Jeff Scott</i>
				Closing Remarks <i>Matt Lentz : AMEC</i>	Closing Remarks <i>Andre Monette : Best Best &amp; Kreiger LLP</i>
11:45 - 1:30 EXHIBITOR FOCUS (PAVILION) AND LUNCH (SOUTH POOLSIDE TERRACE)					

La Jolla cove (left);  
One-on-one discussion at the  
CASQA conference (right)



Courtesy City of San Diego (left); Steven Fraisher & Assoc. (right)

	WORKSHOP 6 MARSEILLES/PORTOFINO	WORKSHOP 7 TERRAZZA BALLROOM	WORKSHOP 8 SORRENTO BALLROOM	WORKSHOP 9 SAN MARINO BALLROOM	WORKSHOP 10 MARBELLA/LAS PALMAS
WORKSHOP	DISSECTING THE LID PUZZLE BMP Toolbox (cont.)	CONSTRUCTION TOOLS AND TALK Change Management, Weather Forecasts, Communications and QSD/QSP Forum (cont.)	WHAT EVERY STORMWATER PROGRAM MANAGER "SHALL" KNOW Guidance From Experienced MS4 Managers (cont.)	INDUSTRIAL STORMWATER COMPLIANCE Key Program Changes (cont.)	UNRAVELING THE BACTERIA PUZZLE Current Regulations and New Technologies
1:30 - 3:00	<p>Welcome/Opening Remarks and Overview <i>Anna Lantin : RBF Consulting</i></p> <p>CASQA BMP Handbook/Webportal and Resources <i>Anna Lantin : RBF Consulting</i></p> <p>Bioretention - Design, Site Selection, Calculations, Contract Specs, Lessons Learned, Performance, and Cost Considerations <i>Ryan Winston : North Carolina State University</i></p> <p>Riverside County Flood Control LID Design Manual and LID/BMP Test Facility – Design Methods, Lessons Learned <i>Bob Cullen : Riverside County Flood Control</i></p>	<p>Welcome/Opening Remarks and Overview <i>Jeff Endicott : AEI-CASC Consulting</i></p> <p>Matching the Pieces: The Ideal and Reality of Construction Stormwater Monitoring <i>Marvin Sachse : Brash Industries</i></p> <p>Weather Watch: Forecast Resources Available from the National Weather Service <i>Alex Tardy : National Weather Service</i></p>	<p>Welcome/Opening Remarks and Overview <i>Daniel Apt : RBF Consulting; Sharon Gosselin : Alameda County</i></p> <p>Program Effectiveness: Planning, Tracking, Reporting, Assessing and Modifying – How to Optimize Your Stormwater Program Effectiveness <i>Karen Ashby : Larry Walker Associates; Jon Van Rhyn : County of San Diego</i></p>	<p>Welcome/Opening Remarks and Overview <i>Sandy Mathews : Larry Walker Associates</i></p> <p>Development and Implementation of a Compliant Monitoring Program <i>Sandy Mathews : Larry Walker Associates</i></p> <p>Overview of Exceedance Response Action Process <i>Ed Childers : Golder Associates</i></p>	<p>Welcome/Opening Remarks and Overview <i>Nancy Gardiner : Weston Solutions</i></p> <p>The Ever-Changing Status of Bacteria TMDLs in California: California Bacteria TMDLs: Alternative Models and Measurements <i>Don Schroeder : CDM Smith</i></p> <p>The New Bacteria Toolbox: Rapid Response, Source ID, Remediation, and Site-Specific Criteria <i>Kelly Goodwin : Weston Solutions</i></p> <p>Case Study: TMDL Implementation – How Much is Enough? <i>Neal Shapiro &amp; Rick Valte : City of Santa Monica</i></p>
3:00 - 3:30	BREAK AND EXHIBITOR FOCUS (PAVILION)				
3:30 - 5:00	<p>Stormwater Harvest and Use and Project Supply and Demand (Example Project) <i>Daniel Apt : RBF Consulting</i></p> <p>Pavement BMPs: Performance Porous Pavement (storage) and Open Graded Friction Coarse <i>Michael Barrett : University of Texas</i></p> <p>Closing Remarks <i>Anna Lantin : RBF Consulting</i></p>	<p>Real World Math: Challenges for pH and Turbidity Sample Reporting on an Ever-Changing Construction Site <i>Courtney Wilson &amp; Kim Williams : Geosyntec Consultants</i></p> <p>The QSD/QSP Renewal Process and CGP Implementation Feedback from State Inspectors <i>Brian Currier : Office of Water Programs at California State University, Sacramento</i></p> <p>QSD &amp; QSP Forum <i>Gerald Montgomery : Montgomery &amp; Assoc., Inc.</i></p> <p>Closing Remarks <i>Jeff Endicott : AEI-CASC Consulting</i></p>	<p>Permittee/Regulator Panel Discussion – Working With Regulators and Making it Work <i>Jim Scanlin : Alameda County; Dale Bowyer : San Francisco Regional Board; Matt Yeager : Yeager Environmental Associates; Michael Adackapara : Santa Ana Regional Board</i></p> <p>Program Effectiveness: Planning, Tracking, Reporting, Assessing and Modifying – How to Optimize Your Stormwater Program Effectiveness <i>Karen Ashby : Larry Walker Associates; Jon Van Rhyn : County of San Diego</i></p> <p>Closing Remarks <i>Daniel Apt : RBF Consulting; Sharon Gosselin : Alameda County</i></p>	<p>Panel Discussion of Potential "Off-Ramps" from the ERA Process – BAT/BCT Compliance Demonstration Report – Non-Industrial Source Pollutant Demonstration Technical Report – Natural Background Demonstration Report <i>Panel - Katharine Wagner : Downey Brand; Tim Simpson : AMEC; James Vernon : Port of Long Beach</i></p> <p>Overview of CASQA Industrial BMP Handbook and Closing Remarks <i>Sandy Mathews : Larry Walker Associates</i></p>	<p>New Responses: Changing the Paradigm of Compliance: Case Study: Exploring Bacteria TMDL Options – From BMP to NSE <i>Shahram Kharaghani : City of Los Angeles</i></p> <p>Case Study: Urban Inland Waters Assessing True Beneficial Uses Interactive Exercise <i>Larry McKenney : Santa Ana Watershed Project Authority</i></p> <p>Interactive Exercise and Closing Remarks <i>Nancy Gardiner : Weston Solutions</i></p>
5:00 - 6:00	EXHIBITOR FOCUS (PAVILION)				
6:30 - 9:30	MONDAY EVENING NETWORKING EVENT (THE WAVE HOUSE – Extra Fee Applies) – SHUTTLES START AT 6:05				



View from the Wave House (left), venue for the Monday Evening Networking Event; CASQA will be recognizing State Senator Christine Kehoe (right) on Tuesday, November 6, 2012 for her landmark legislation — SB346, the brake pad bill



7:30a - 5:30p					
REGISTRATION DESK (FOYER)					
8:00a - 7:30p					
EXHIBITS (PAVILION)					
PLENARY SESSION 8:30 - 9:40	WELCOME AND OPENING REMARKS – RICHARD BOON, Chair, CASQA KEYNOTE ADDRESS – CHAD PREGRACKE, Founder & President, Living Lands & Waters CAPRI, RIVIERA, MONTE CARLO, AND ST. TROPEZ BALLROOMS				
9:40 - 10:00					
BREAK AND EXHIBITOR FOCUS (PAVILION)					
	TRACK A TERRAZZA BALLROOM	TRACK B SORRENTO BALLROOM	TRACK C* SAN MARINO BALLROOM	TRACK D MARBELLA/LAS PALMAS	TRACK E MARSEILLES/PORTOFINO
SESSION 1	CLEAN WATER ACT	CONSTRUCTION PERMIT	INDUSTRIAL PERMIT	MODIFYING PUBLIC BEHAVIOR	STORMWATER TREATMENT
MODERATOR	Rebecca Winer-Skonovd : Larry Walker Associates	Sara Huber : Weston Solutions	Bill Flores : HDR	Claudia Steiding : County of Riverside	Stephanie Reyna-Hiestand : City of Tracy
10:00 - 10:30	Has the Clean Water Act Been Successful? A 40-Year Retrospective Analysis of the Southern California Coastal Ocean Karen Setty : Southern California Coastal Water Research Project Authority	Field Compliance Under the New Construction General Permit Tracy Beach & Artemio Barrera : Bureau Veritas	Industrial General Permit Reissuance 2012 Update Greg Gearheart : State Water Board	What a Decade of Data Taught Us About Our Outreach Approach Jenna Voss & Richard Boon : County of Orange; Erica Hooper : S. Groner Associates, Inc.	Integration of A Basin-Scale Model with Remote Sensing for Design and Performance Evaluation of BMPs – Machado Lake Watershed Study Samuel Darkwah & Inge Wiersema : Carollo Engineers; John Dettle : City of Torrance
10:35 - 11:05	Reflecting on 25 Years of 402(P) and the California Experience Malcolm Walker & Brian Laurenson : Larry Walker Associates	A "Master" SWPPP for Construction General Permit Compliance Rosanna Lacarra : LaRoc Environmental	John Wayne Airport – As the Duke Would Say, "Tomorrow Hopes We Have Learned Something from Yesterday" Maria Pope : John Wayne Airport; Jason Pereira : CWE	Mind Your Own Business! An Adaptive Management Approach to Assisting Businesses with Compliance Jennifer Nichols Kearns & Cheryl Cac : City of San Diego	Zinc Removal From Stormwater Using a Passive Treatment BMP Tim Bauters : Golder Associates Inc.
11:10 - 11:40	Starting from the Finish Line: A Paradigm Shift in the Development and Implementation of Stormwater Programs Karen Ashby : Larry Walker Associates, Inc.	Report From the Trenches Ejigu Solomon : Los Angeles Regional Board	Oil and Gas Production and Storm Water Regulation: A Combination That Won't Mix S. Wayne Rosenbaum : Stole Rives LLP; Sean Porter : SCS Engineers	Building Brands that Connect with Difficult Audiences Stephen Groner : S. Groner Associates	Adaptive Stormwater Management at an Industrial Site with Numeric Effluent Limits Brandon Steets : Geosyntec Consultants; Jon Jones : Wright Water Engineers; Robert Pitt : University of Alabama
ALTERNATE		An Overview of Active Treatment Systems: Applications, Design, Operations, and Cost Joe Gannon : Clear Creek Systems, Inc.	Hope Is NOT a BMP – Lessons in Railroad Stormwater Ross W. Dunning : Kennedy/Jenks Consultants		Enforcement of Stormwater BMP Maintenance – The Forgotten Element in Improving Water Quality Craig Beatty & Greg Kent : Stormwater Equipment Manufacturers Association
11:40 - 12:00					
EXHIBITOR FOCUS (PAVILION)					
12:00 - 1:30					
LUNCH (CAPRI, RIVIERA, MONTE CARLO AND ST. TROPEZ BALLROOMS) SPECIAL PRESENTATION TO STATE SENATOR CHRISTINE KEHOE / CASQA AWARDS PROGRAM					
	TRACK A TERRAZZA BALLROOM	TRACK B SORRENTO BALLROOM	TRACK C* SAN MARINO BALLROOM	TRACK D MARBELLA/LAS PALMAS	TRACK E MARSEILLES/PORTOFINO
SESSION 2	REGULATIONS, PERMITS & POLICIES	PROGRAM ASSESSMENT	INDUSTRIAL PERMIT	MODIFYING PUBLIC BEHAVIOR	STORMWATER TREATMENT
MODERATOR	Elaine Lukey : City of Carlsbad	Jon Van Rhyn : County of San Diego	Matt Lentz : AMEC	Jennifer Nichols Kearns : City of San Diego	Scott Taylor : RBF Consulting
1:30 - 2:00	Biological Objectives for California Streams Ken Schiff : Southern California Coastal Water Research Project	The Confidence Game – Are We Using Monitoring Resources Effectively for the Given Variability in Stormwater Data to Measure Compliance and Program Effectiveness? Jo Ann Weber : County of San Diego; David Pohl : Weston Solutions, Inc.	Two Permits at Once. Complying with the Existing Industrial General Permit (IGP) and Cost Effectively Planning for the Integration of New Requirements in the New IGP Kelley Kelso & Jason Drew: Nichols Consulting Engineers; Curtis Garner : Tahoe Transportation District	Public Outreach Role in Reducing Surface Water Nutrient Loading Ron Carr : City of Perris; Maria Elena Kennedy : Kennedy Communications; Lynn Merrill : Lynn Merrill Consulting	Regional Treatment Using Retrofit BMPs Brendan Hastie : Rick Engineering Company; Cid Tesoro : County of San Diego; Mark Seits : HDR Inc.

\*Track C on Tuesday, November 6, 2012 is available by Webcast (extra fee applies)

	<b>TRACK A</b> TERRAZZA BALLROOM	<b>TRACK B</b> SORRENTO BALLROOM	<b>TRACK C*</b> SAN MARINO BALLROOM	<b>TRACK D</b> MARBELLA/LAS PALMAS	<b>TRACK E</b> MARSEILLES/PORTOFINO
SESSION 2	<b>REGULATIONS, PERMITS &amp; POLICIES</b>	<b>PROGRAM ASSESSMENT</b>	<b>INDUSTRIAL PERMIT</b>	<b>MODIFYING PUBLIC BEHAVIOR</b>	<b>STORMWATER TREATMENT</b>
<b>2:05 - 2:35</b>	The Endangered Species Act and Stormwater: Another Route to Numeric Effluent Limits? <i>Eric Strecker : Geosyntec Consultants</i>	Effectiveness of Trash Control Measures <i>Vaikko Allen : CONTECH Engineered Solutions, LLC; Roger James : Water Resources Management</i>	Oyster Bay Tidal March Pre-Production Pellet Cleanup <i>Laura Cremer : Otis Institute</i>	How to Create a Website People Will Visit <i>Erica Hooper : S. Groner Associates</i>	Sustainable Stormwater Management at an Auto Dismantling Site <i>Martin Sponberg : AMEC</i>
<b>2:40 - 3:10</b>	San Diego Hydromodification Monitoring Requirements and Site Selection <i>Brian Haines : ESA PWA; Christine Sloan : County of San Diego</i>	Numeric Action Levels: The New Driver for Stormwater Programs in Southern California <i>Karen Ashby : Larry Walker Associates, Inc.; Richard Boon : County of Orange</i>	A Case Study of a Scrap Facility Reducing Mass Emissions to Comply with a Consent Agreement <i>Brent Smith : AMEC</i>	Elk Grove Rain Garden Plaza <i>Darren Wilson : City of Elk Grove</i>	Runoff Treatment for a Waterfront Log Sort Yard <i>Ross W. Dunning : Kennedy/Jenks Consultants; Anita Fichthorn : Port of Tacoma</i>
ALTERNATE	2012 Contra Costa Community Clean Water Initiative – Lessons Learned: Creating a Countywide Dedicated Revenue Source for NPDES Permit Compliance <i>John Bliss &amp; Jesse Salmon : SCI Consulting Group; Karen Ashby : Larry Walker and Associates</i>	Southern California Regional Stormwater Monitoring Comparison and Evaluation <i>Bram Sercu : Ventura County Watershed Protection District</i>	Landfill Compliance Strategies for the Proposed CA Industrial General Permit <i>Kim Williams, Kathleen Harrison &amp; Eric Smalstig : Geosyntec Consultants</i>	Stormwater Enforcement Case Study <i>Ryan Bailey : Sacramento County</i>	Madrona Marsh Restoration and Enhancement Project: Preserving a Last Urban Marsh Using Innovative Wetland Technology <i>John Dettle &amp; Tracy Drake : City of Torrance; Zach Kent : Modular Wetland Systems, Inc.</i>
<b>3:10 - 3:45</b>	<b>BREAK AND EXHIBITOR FOCUS (PAVILION)</b>				
	<b>TRACK A</b> TERRAZZA BALLROOM	<b>TRACK B</b> SORRENTO BALLROOM	<b>TRACK C*</b> SAN MARINO BALLROOM	<b>TRACK D</b> MARBELLA/LAS PALMAS	<b>TRACK E</b> MARSEILLES/PORTOFINO
SESSION 3	<b>REGULATIONS, PERMITS &amp; POLICIES</b>	<b>PROGRAM ASSESSMENT</b>	<b>TRUE SOURCE CONTROL</b>	<b>SUSTAINABLE DEVELOPMENT</b>	<b>STORMWATER TREATMENT</b>
MODERATOR	<b>Lisa Austin : Geosyntec Consultants</b>	<b>Richard Boon : County of Orange</b>	<b>Gerhardt Hubner : Ventura County Watershed Protection District</b>	<b>Jill Bicknell : Santa Clara Valley Urban Runoff Pollution Prevention Program</b>	<b>Nicole West : LSA Associates</b>
<b>3:45 - 4:15</b>	Citizens versus Stormwater: the Malibu Citizen Suit Litigation <i>Melissa Thorne : Downey Brand LLP; Lauren Langer : Jenkins &amp; Hugin LLP</i>	BMP Implementation Rates and Motivations in Single and Multi-Family Residential Areas <i>John Quenzer &amp; Brianna Martin: D-Max Engineering; Barby Tipton : City of National City</i>	Finding the Path to Cost Effective Zinc Compliance: CASQA's Zinc Source Identification and Source Control Opportunity Investigation <i>Kelly D. Moran : TDC Environmental</i>	Bioretention Facility Performance: Initial Field Data and Implications for Stormwater Retention and Hydromodification Management Policies <i>Dan Cloak : Dan Cloak Environmental Consulting; Tom Dalziel : Contra Costa Clean Water Program</i>	Mucking Around With BMPs: A Preliminary Look at Challenges in Removing Sediment, Trash and Debris <i>James Nabong &amp; Jim Hook : City of San Diego</i>
<b>4:20 - 4:50</b>	ASBS Protection – A Step Forward in Effecting Regulatory Change – Using Science-based and Collaborative Approach to Effect Regulatory Change <i>Robert Stein : City of Newport Beach; David Pohl : Weston Solutions, Inc.</i>	Adaptive Management as a Core Principle in Stormwater Program Planning and Assessment: What Permit Writers Need to Know <i>Jon Van Rhyn : County of San Diego</i>	Polycyclic Aromatic Hydrocarbons – Urban Sources and Source Identification <i>Kristina Schneider &amp; Brenda Stevens : AMEC; Ruth Kolb : City of San Diego</i>	Los Angeles Community College District Stormwater Harvesting and Use Projects <i>Daniel Apt &amp; Jeremy Hohnbaum : RBF Consulting</i>	Low Flow Diversions for Coastal Bacteria Control – the City of Los Angeles Experience <i>Richard Haimann : HDR; Wing Tam : City of Los Angeles</i>
<b>4:55 - 5:25</b>	Trash Source Control as an Alternative to Full Capture – An Approach to Developing and Implementing Load Reduction Credits <i>Chris Sommers : EOA, Inc.</i>	Identifying Opportunities for Improving Monitoring Program Efficiency by Assessment of Water Quality and Trends at Mass Emission Stations in Ventura County <i>Bram Sercu : Ventura County Watershed Protection District</i>	A Holistic Approach to Landscape IPM: Promoting Sustainable Landscaping as a Basic Urban Pesticide Management Tool in San Jose <i>Sanhita Ghosal : City of San Jose</i>	Maximizing LID While Facilitating Smart Growth: The LID Credit System <i>Michael Rhoades : City of San Jose</i>	New Laboratory Sediment Removal Efficiency Testing Protocols for Manufactured Treatment Devices <i>Ryan Janoch &amp; Mike Kimberlain : Stormwater Equipment Manufacturers Association</i>
ALTERNATE	An Alternative Approach to the TMDL Process – Big Canyon Selenium Reduction Program <i>Robert Stein : City of Newport Beach</i>	A Progressive Approach to Achieving Industrial/Commercial Compliance in the City of San Diego <i>Annika Kubischta : D-Max Engineering, Inc.; Andre Sonksen : City of San Diego</i>	Local Governments' Cost of Marine Debris <i>Saskia van Gendt : U. S. Environmental Protection Agency Region 9</i>	Innovative LID/Green Streets Parking Lot Retrofit at the Ventura County Government Center <i>Yugal Lall &amp; Gerhardt Hubner : Ventura County Watershed Protection District</i>	Peat-Based Sorption Media: A New Approach for Removing Heavy Metals from Stormwater <i>Paul Eger : Golder Associates</i>
<b>5:30 - 7:30</b>	<b>EXHIBITOR RECEPTION (PAVILION)</b>				

7:00a - 8:30a					
TRAINER OF RECORD FORUM (CAPRI BALLROOM)					
7:30a - 12:00p					
REGISTRATION DESK (FOYER)					
8:00a - 1:30p					
EXHIBITS (PAVILION)					
	TRACK A TERRAZZA BALLROOM	TRACK B SORRENTO BALLROOM	TRACK C SAN MARINO BALLROOM	TRACK D MARBELLA/LAS PALMAS	TRACK E MARSEILLES/PORTOFINO
SESSION 4	REGULATIONS, PERMITS & POLICIES	TMDLs in MS4 PERMITS	STORMWATER TREATMENT	SUSTAINABLE DEVELOPMENT	SCIENTIFIC ADVANCES
MODERATOR	Kelly Dyer : CDM Smith	Anna Lantin : RBF Consulting	Mikhail Ogawa : Mikhail Ogawa Engineering	Amanda Carr : City of Irvine	Armand Ruby : Armand Ruby Consulting
8:00 - 8:35					
EXHIBITOR FOCUS (PAVILION)					
8:35 - 9:05	Can Waterboards Follow the Rules? Storm Water Permits and the Administrative Procedures Act <i>S. Wayne Rosenbaum : Stoel Rives LLP</i>	Watershed Monitoring and Assessment Tools for TMDL Implementation <i>Khalil Abusaba : Brown and Caldwell</i>	Optimizing Green Street Design for Watershed Protection: A City of San Diego BMP Implementation Project <i>Jason Wright &amp; Chad Helmle : Tetra Tech</i>	Stormwater Capture for Water Supply: Southern California Take on the Challenge <i>Rich Atwater : Southern California Water Committee; Catherine Tyrrell : RMC Water &amp; Environment</i>	Fipronil Toxicity – Coming Soon to California Urban Watersheds <i>Kelly D. Moran : TDC Environmental</i>
9:10 - 9:40	Hydromodification Monitoring – Characterization of Bedload Movement for Evaluation of the 2-Year Runoff Event <i>David Renfrew &amp; Garth Engelhorn : Weston Solutions, Inc.; Christine Sloan : County of San Diego</i>	Review of Bacteria TMDL Approaches Taken in California (with MS4 Focus) <i>Don Schroeder : CDM Smith</i>	Dissolved Zinc and Copper Absorption in Pervious Concrete Under Enhanced Loading Conditions <i>Liv Haselbach : Washington State University</i>	Feasibility of Rainwater Harvesting and Use for Permit Compliance in Santa Clara Valley <i>Jill Bicknell : Santa Clara Valley Urban Runoff Pollution Prevention Program</i>	Improving Water Quality in the Tijuana River – Identifying Sources of Bacteria in an International Watershed <i>Damon Owen : Weston Solutions; Chris Helmer : City of Imperial Beach</i>
9:45 - 10:15	Online MS4 Reporting <i>Joe Purohit : EcoLayers, Inc.; David Gibson : San Diego Regional Board; Andre Sonksen : City of San Diego</i>	The Search for Pollutant Sources and Opportunities – Applying Decision Tree Analyses to Inform the Selection of PCB and Mercury Control Measures <i>Lisa Sabin &amp; Chris Sommers : EOA, Inc.</i>	Hidden Treasure of Garvanza – Facility to Capture, Treat, Infiltrate, and Use Stormwater <i>Vik Bapna : CWE</i>	Greener Infrastructure: Incorporating Lessons Learned from Phase I of Elmer Avenue Neighborhood Retrofit into the Design and Monitoring of Phase 2 <i>Eileen Alduenda &amp; Kristy Morris : Council for Watershed Health; Jason Wright : Tetra Tech, Inc.</i>	Assessing Natural Sources and Regrowth of Enterococcus in Urban Runoff Impacting Coastal Beaches in San Diego <i>Donna Ferguson : Southern California Coastal Water Research Project; Mayela Manasjan : City of Encinitas; Andre Sonksen : City of San Diego</i>
ALTERNATE	Comparison of the Biotic Ligand Model and Water Effect Ratio Approaches for the Derivation of Site Specific Criteria for Copper in San Diego Bay <i>Robert Santore : HDR, Inc.</i>	Concentrations of TMDL Pollutants of Concern in 16 Urban Tributaries in the San Francisco Bay Area: A Characterization Study to Inform Selection of Long-Term POC Monitoring Sites <i>Jennifer Hunt &amp; Alicia Gilbreath : SFEI</i>	Artificial Turf Infiltration Area as a Stormwater Treatment Control BMP <i>Richard Gilb : San Diego County Regional Airport Authority</i>		Transforming Our Cities: High Performance Green Infrastructure and Distributed Real-Time Monitoring and Control <i>Marcus Quigley &amp; Peter Mangarella : Geosyntec Consultants</i>
10:15 - 10:40					
BREAK AND EXHIBITOR FOCUS (PAVILION)					

### Trainer of Record Forum

CASQA will host its first Trainer of Record (ToR) Forum from 7:00 to 8:30 a.m. on Wednesday November 7, 2012 in the Capri Ballroom. All qualified ToRs and those ToR candidates whose statement of qualifications has been approved as part of the recent request for qualifications process are encouraged to attend. The Forum is intended to provide an opportunity to network, discuss lessons learned and updates to the Construction General Permit (CGP) training, evaluate options for ToR refresher training, and to pose questions and concerns about providing the CGP training.





	TRACK A TERRAZZA BALLROOM	TRACK B SORRENTO BALLROOM	TRACK C SAN MARINO BALLROOM	TRACK D MARBELLA/LAS PALMAS	TRACK E MARSEILLES/PORTOFINO
SESSION 5	REGULATIONS, PERMITS & POLICIES	CONSTRUCTION PERMIT	STORMWATER TREATMENT	TRUE SOURCE CONTROL	SCIENTIFIC ADVANCES
MODERATOR	<b>Gerald Montgomery :</b> <b>Montgomery &amp; Associates, Inc.</b>	<b>Lisa Haney :</b> Orange County <b>Sanitation District</b>	<b>Kevin McGillicuddy :</b> <b>Roscoe Moss</b>	<b>Ruth Kolb :</b> <b>City of San Diego</b>	<b>Mack Walker :</b> <b>Larry Walker Associates</b>
10:40 - 11:10	The Next Generation Permit – The New Phase II NPDES Permit <i>Christine Sotelo :</i> <i>State Water Board</i>	Is SMARTS Making Us Smarter? Observations Regarding Construction Sites Gleaned from the Public Access Portal to SMARTS <i>Jeff Endicott &amp; Rebekah Guill :</i> <i>AEI-CASC Engineering, Inc.</i>	Development and Construction of an LID BMP Testing and Demonstration Facility at the Riverside County Flood Control and Water Conservation District Headquarters, Riverside, California <i>Arlene Chun : Riverside County Flood Control and Water Conservation District</i>	True Source Control: GreenPro Helps Consumers and Agencies Reduce Pesticides in Runoff by Obtaining Bona Fide Integrated Pest Management Services <i>Bob Rosenberg &amp; Andrew Architect : National Pest Management Association</i>	Where, What and How Much Trash? – Lessons Learned from Developing Trash Generation Rates for MS4s in the San Francisco Bay Area <i>Chris Sommers : EOA, Inc. ; Natalee Henry :</i> <i>Cascadia Consulting Group</i>
11:15 - 11:45	Regional Municipal Separate Storm Sewer System (MS4) Permit for the San Diego Region <i>Wayne Chiu :</i> <i>San Diego Regional Board</i>	Permitting a \$10 Billion Renewable Energy Construction Project – Challenges, Solutions, and Lessons Learned <i>Paul Teensma &amp; Paul Ahn :</i> <i>Southern California Edison</i>	Evaluation of Large Scale Infiltration and Retention/Reuse on Receiving Waters Within San Diego County <i>Richard Lucera : RBF Consulting</i>	Eliminating Pesticide Toxicity Through True Source Control: Recent Successes in Affecting Pesticide Regulations Hold Promise for Regulatory Relief <i>Dave Tamayo :</i> <i>County of Sacramento</i>	Using Algae for Bioassessment of California Wadeable Streams <i>Betty Fetscher : Southern California Coastal Water Research Project</i>
ALTERNATE	Findings of a Review of Science Supporting Dissolved Oxygen Objectives in California Estuaries <i>Martha Sutula : Southern California Coastal Water Research Project</i>	Construction Site Compliance – From the Inside Out <i>Melanie E. Sotelo &amp; Michael W. O'Hearn :</i> <i>AEI-CASC Consulting, Inc.</i>	Coanda BMP for Removal of Sediment, Nutrients, and Metals From Urban Runoff <i>Steve Esmond : Coanda, Inc. ; Robbin Webber : City of Rowlett</i>		
11:45 - 12:00	EXHIBITOR FOCUS AND PRIZE DRAWING (PAVILION)				



**Creating value by delivering innovative and sustainable solutions for infrastructure and the environment.**



Engineering & Science • Outreach & Education  
Stormwater Quality • Structural BMP Design • NPDES Permit Compliance  
Construction Stormwater Compliance • Regional Flood Protection  
Watershed & Stream Corridor Planning • Urban Drainage Facilities & Master Planning

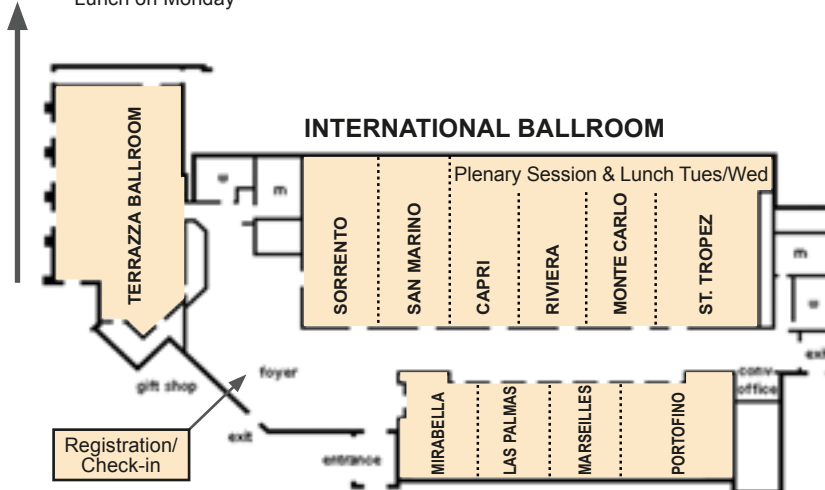


[www.mbakercorp.com](http://www.mbakercorp.com) ■ [www.rbf.com](http://www.rbf.com) ■ 800.479.3808

12:00 - 1:15 LUNCH (CAPRI, RIVIERA, MONTE CARLO AND ST. TROPEZ BALLROOMS)					
	TRACK A TERRAZZA BALLROOM	TRACK B SORRENTO BALLROOM	TRACK C SAN MARINO BALLROOM	TRACK D MARBELLA/LAS PALMAS	TRACK E MARSEILLES/PORTOFINO
SESSION 6	SCIENTIFIC ADVANCES (BACTERIA)	TMDLs IN MS4 PERMITS	SUSTAINABLE DEVELOPMENT (HYDROMOD & LID)	SUSTAINABLE DEVELOPMENT	SCIENTIFIC ADVANCES
MODERATOR	Tracy Ingebrigtsen : City of Laguna Beach	Jason Uhley : Riverside County Flood Control	Nicole West : LSA Associates	Sara Huber : Weston Solutions	Lisa Haney : Orange County Sanitation District
1:15 - 1:45	Managing and Predicting Costs, Benefits, and Uncertainties in Comprehensive Load Reduction Planning for Compliance with San Diego County Bacteria TMDLs <i>Ken Susilo : Geosyntec Consultants</i>	The Power of Regulatory Approaches to Avoid TMDLs and Reduce TMDL Implementation Requirements: Success Stories in the San Diego and Los Angeles Region <i>Karen Cowan &amp; Ashli Desai : Larry Walker Associates</i>	Central Coast Hydromodification Requirements – Reducing BMP Sizes and Costs <i>Chad Helmle : Tetra Tech</i>	Integration of Stormwater Management into Water Supply Planning <i>Dan Rodrigo : CDM Smith</i>	Historical Analysis as a Tool to Inform Watershed-based Stormwater Management <i>Eric Stein : Southern California Coastal Water Research Project; Shawna Dark : California State University, Northridge</i>
1:50 - 2:20	Bacterial Source Identification at Poche Beach – Reducing Beach Impacts from a Coastal Urban Watershed <i>Steve Gruber : Weston Solutions; Mary Vondrak : City of San Clemente</i>	Benefits and Challenges of Offsetting TMDL Required Watershed Nutrient Loads Reductions with In-Lake Management Strategies <i>Steven Wolosoff : CDM Smith; Jason Uhley : Riverside County Flood Control and Water Conservation District</i>	Developing Integrated Projects to Promote LID <b>Moderators</b> - <i>Scott Taylor : RBF Consulting; Jennifer Krebs : SFEP</i> <b>Panelists</b> - <i>Daniel Apt : RBF Consulting; Matt Fabry : San Mateo Countywide Water Pollution Prevention Program; Rosey Jencks : San Francisco Public Utilities Commission; Michael Rhodes : City of San Jose</i>	The Ancient Stormwater Management Practice of the Hani Terrace with LID Idea <i>Wu Che : Beijing University of Civil Engineering and Architecture</i>	Quantifying Recharge Beneath Low Impact Development Under Current and Future Climate Variability <i>Jason Gurdak &amp; Michelle Newcomer : San Francisco State University</i>
2:25 - 2:55	Unraveling Bacteria TMDL Compliance and Uncontrollable Sources: A Proposed Weight of Evidence Approach for Natural Source Exclusion Qualification <i>Jennifer Brown : City of Malibu; Brandon Steets : Geosyntec Consultants</i>	How Low Can You Go? Evaluating EPA Method 1668 for Implementation of the Marina del Rey TMDL for Toxic Pollutants <i>Jaime Sayre : Brown and Caldwell; Raymond To : County of Los Angeles Department of Public Works; Khalil Abusaba : Brown and Caldwell</i>		Alternative Compliance in Ventura County: Viable Options and Lessons Learned <i>Arne Anselm : Ventura County Watershed Protection District; Rebecca Winer-Skonovd : Larry Walker Associates</i>	Lessons in Application of the Sediment Quality Objectives as an Assessment Tool in Southern California Marinas <i>Andrea Crumacker, MS : Weston Solutions, Inc.; Kara Edewaard : Lockheed Martin</i>
3:00 - 3:30	The Prevalence of Cyanobacteria and Cyanotoxins in Southern California Waterbodies <i>Meredith Howard : Southern California Coastal Water Research Project</i>	TMDLs: Process Overview and BMP Implementation Strategies <i>Anna Lantin : RBF Consulting</i>	Riverbank LID Manual: A Streamlined and User-Friendly Approach to LID Guidance <i>Eric Zickler : AECOM</i>	What if You Planned Ahead? Using Sustainability Principles to Guide Your New Scrapyard Design <i>Robin Spencer : Spencer Environmental</i>	Riverine Nutrient Inputs and Extent of Estuarine Eutrophication in the Southern California Bight <i>Karen McLaughlin &amp; Martha Sutula : Southern California Coastal Water Research Project; Lilian Busse : San Diego Regional Board</i>
3:30 - 4:05	Bacteria TMDL Reopeners: Speak Now or Forever Hold your Nose <i>Dustin Bambic : Tetra Tech</i>	Comprehensive Load Reduction Plans to Address TMDLs in San Diego – A Strategic and Collaborative Effort <i>Clem Brown &amp; Drew Kleis : City of San Diego; Stephen Carter : Tetra Tech</i>	Sensitivities of LID-Based Hydromodification BMPs <i>Raina Dwivedi &amp; Judd Goodman : Geosyntec Consultants</i>	Stormwater Project Development through Integrated Regional Water Management Planning (IRWMP) in the Greater Los Angeles County Region <i>Ken Susilo : Geosyntec Consultants; Catherine Tyrrell : RMC Water and Environment</i>	Improving Tools to Link Nutrient to Stream Algal Biomass: Validation of the Nutrient Numeric Endpoint (NNE) Framework Benthic Algal Biomass Spreadsheet Tool for Southern California Streams <i>Ashmita Sengupta : Southern California Coastal Water Research Project</i>
ALTERNATE		TMDLs in MS4 Permits: Game Change <i>Henry Garcia &amp; Kent Wegelin : City of Moreno Valley; Chandra Thomas : Riverside County</i>		Hydrology Analyses for Distributed and Regional Stormwater Harvesting Opportunities in Southern California <i>Steven Wolosoff : CDM Smith</i>	

## HILTON SAN DIEGO RESORT – Main Level

**SOUTH POOLSIDE TERRACE**  
Lunch on Monday



 CASQA CONFERENCE ROOMS

**EXHIBITOR PAVILION**  
Breaks on Tues/Wed  
Tues Exhibitor Reception

See Exhibit Hall Map on following page



## Bringing together California's leading stormwater solution experts

Geomatrix and MACTEC have joined AMEC. With our collective technical capabilities and office locations throughout the state of California, clients benefit from AMEC's stormwater solutions that combine innovation, cost-effectiveness and environmental responsibility.

### Services include:

Comprehensive stormwater program management | treatment control engineering and design | litigation/regulatory support | TMDL compliance and strategic planning | stormwater infiltration | modeling/GIS Integration | water supply planning | watershed planning and management | groundwater studies | hydraulic and hydrologic design | mapping and floodplain management | monitoring program design and implementation

Cathedral City 760.202.1853	Eureka 707.444.7800	Irvine 949.642.0245	Oakland 510.663.4100	Riverside 951.369.8060	San Diego 858.300.4300
Corona 951.273.7400	Fresno 559.264.2535	Los Angeles 323.889.5300	Petaluma 707.793.3800	Sacramento 916.636.3200	San Diego 858.278.3600

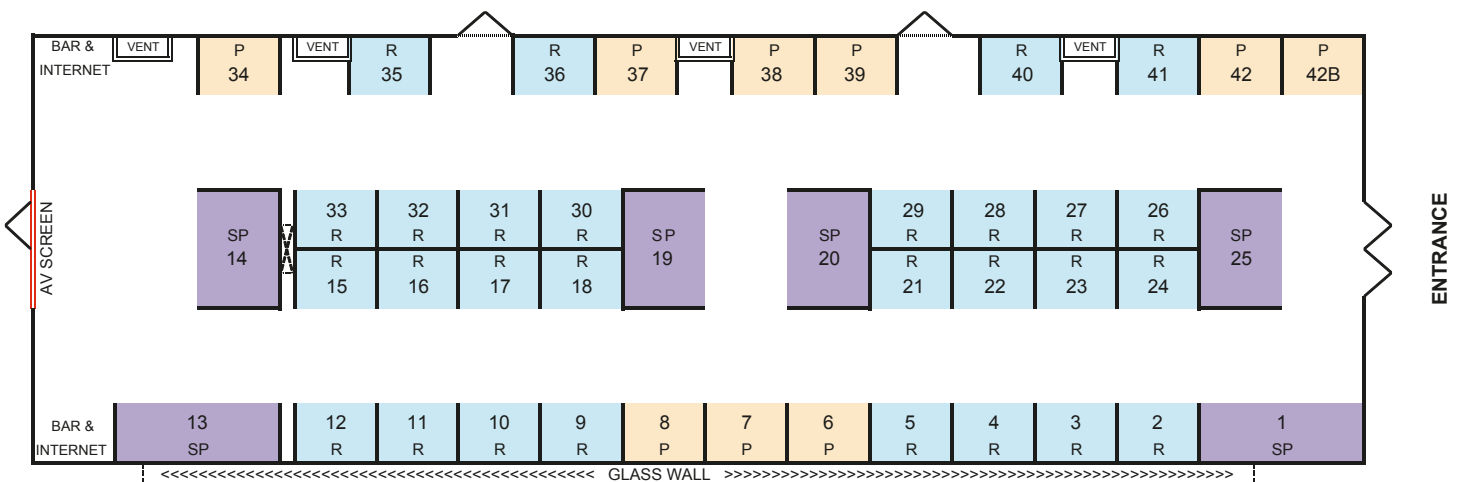
[amec.com](http://amec.com)



# CASQA CONFERENCE EXHIBITORS AND EXHIBIT HALL MAP

BOOTH	EXHIBITOR	CONTACT	ADDRESS / PHONE	WEBSITE
1	KriStar/Filterra Alliance	Craig Beatty	360 Sutton Place, Santa Rosa, CA 95407 Phone (800) 579-8819	www.kristar.com
2	Clearwater Solutions, Inc.	Joe Arthur	P.O. Box 2078, Vista, CA 92085 Phone (800) 758-8817	www.clearwaterbmp.com
3	PACE	Michelle Hoalton	17520 Newhope Street, Suite 200, Fountain Valley, CA 92708 Phone (714) 481-7300	www.pacewater.com
4	American Peat Technology	Ryan Menzel	36203 350th Ave., Aitkin, MN 56431 Phone (218) 927-7888	www.americanpeattech.com
5	CBI-Systems, Ltd.	Ty Garmon	3120 Fannin Street, Beaumont, TX 77701 Phone (409) 835-3095	www.cbi-systems.com
6	AC&E, Inc. Absorb, Concentrate, Eliminate	Stephen Quartararo	6693 Moonriver Street, Eastvale, CA 91752 Phone (714) 337-4323	www.waterace.net
7	California Water Boards	Greg Gearheart	1001 "I" Street, Sacramento, CA 95814 Phone (866) 563-3107	www.waterboards.ca.gov/stormwater/
8	Shift Business Intelligence, Inc.	Greg McCormick	2102 Oakcrest Drive, Riverside, CA 92506 Phone (951) 315-1081	www.shiftstormwater.com
9	AquaShield, Inc.	Julie Danley	2705 Kanasita Drive, Chattanooga, TN 37343 Phone (423) 870-8888	aquashieldinc.com
10	Campbell Scientific, Inc.	Ron Goodrich	815 West 1800, North Logan, UT 84321 Phone (435) 227-9000	www.campbellsci.com
11	Imbrium Systems Corporation	Laddie Fromelius	7564 Standish Place, Suite 112, Rockville, MD 20855 Phone (210) 269-8321	www.imbriumsystems.com
12	C.I. Agent StormWater Solutions	James Aderhold	5142 Bolsa Ave., #105, Huntington Beach, CA 92649 Phone (562) 619-8708	www.ciagent-stormwater.com
13	Downstream Services, Inc.	Kim Carr	2855 Progress Place, Escondido, CA 92029 Phone (760) 746-2544	www.downstreamservices.com
14	Bio Clean Environmental Services, Inc. / Modular Wetlands	Abigail Kent	2972 San Luis Rey Road, Oceanside, CA 92058 Phone (760) 433-7640	www.BioCleanEnvironmental.net

## EXHIBITOR PAVILION



SUPER PREMIUM EXHIBITOR
  PREMIUM EXHIBITOR
  REGULAR EXHIBITOR

BOOTH	EXHIBITOR	CONTACT	ADDRESS / PHONE	WEBSITE
15	Oldcastle	John Scott	705 Mosaic Circle, Oceanside, CA 92057 Phone (858) 583-6152	www.oldcastleprecast.com
16	E.S. Babcock & Sons, Inc.	Dan Wing	6100 Quail Valley Court, Riverside, CA 92507 Phone (951) 653-3351	www.babcocklabs.com
17	Blocksom & Company	Augie Brazys	450 St. John Road Suite 710, Michigan City, IN 46360 Phone (219) 878-4438	www.blocksom.com
18	Tetra Tech	Chad Helmle	9444 Balboa Ave., Suite 215, San Diego, CA 92123 Phone (858) 268-5746	www.tetrattech.com
19	City of San Diego (Storm Water/Think Blue)	Jennifer Kearns	9370 Chesapeake Dr. #100, San Diego, CA 92123 Phone (858) 541-4331	www.thinkblue.org
20				
21	Neptune Automated Wheel Wash Systems	Roxanne Garrett	174 Cornerstone Ct., Suite B, Hot Springs, AR 71913 Phone (501) 525-8484	www.neptunewash.com
22	Earthguard by Terra Novo	Andy Iturriria	2930 Patton Way, Bakersfield, CA 93308 Phone (888) 843-1029	www.EarthGuard.com
23	Rain for Rent	Ellaine Hibbs	P.O. Box 2248, Bakersfield, CA 93303 Phone (800) 742-7246	www.rainforrent.com
24	ETIC Engineering	Daniela Kobsar	2285 Morello Avenue, Pleasant Hill, CA 94523 Phone (925) 602-4710	www.eticeng.com



RESOURCE MANAGEMENT  
www.hdrinc.com



STORMWATER FLOW-THROUGH PLANTER

## ADVANCING CREATIVE STORMWATER COMPLIANCE SOLUTIONS

A comprehensive, systematic approach provides our clients with long-term solutions to the sometimes competing demands of stakeholders.

HDR provides expertise in the following areas:

- Low Impact Development (LID) planning, design & manual development
- NPDES compliance program planning & implementation guidance
- Reports of Waste Discharge (ROWD), Reasonable Potential Analysis (RPA), and NPDES permit support
- TMDL implementation planning & third party TMDL development
- Watershed, water quality, hydrology and hydraulics modeling
- Drainage and water quality master planning
- Structural Best Management Practice (BMP) planning, analysis, & design
- Stormwater utility management support, financing studies and support
- Wetlands and stream evaluations
- Illicit cross connection studies
- Condition assessments
- Monitoring and reporting

### OFFICES WORLDWIDE

San Diego | 858.712.8400    Los Angeles | 213.239.5800  
Irvine | 714.730.2300    Pasadena | 626.584.1700  
Long Beach | 562.264.1100    Riverside | 951.320.7300

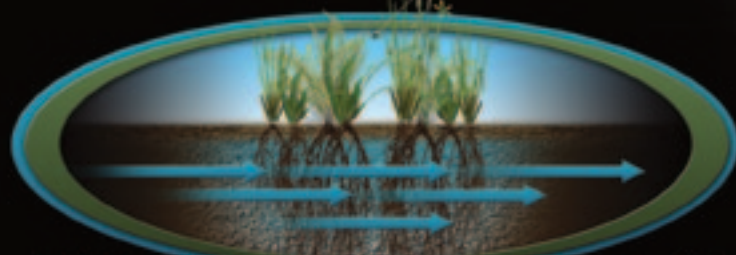
BOOTH	EXHIBITOR	CONTACT	ADDRESS / PHONE	WEBSITE
25	CONTECH Engineered Solutions, Inc.	Vaikko Allen	3777 Long Beach Blvd., Long Beach, CA 90807 Phone (562) 733-0733	www.conteches.com
26	Angelus Block Co., Inc.	David Quinn	3435 S. Riverside Ave., Rialto, CA 92316 Phone (951) 328-9115	www.angeluspavingstones.com
27	AEI-CASC Consulting	Amy Williams	1470 Cooley Drive, Colton, CA 92324 Phone (909) 783-0101	www.aei-casc.com
28	Hanna Instruments	Josh Ryan	270 George Washington Hwy., Smithfield, RI 02917 Phone (800) 426-6287	www.hannainst.com
29	Weck Laboratories, Inc.	Leo Raab	14859 E. Clark Avenue, City of Industry, CA 91745 Phone (626) 336-2139	www.wecklabs.com
30	United Storm Water, Inc.	Lydia Perry	14000 E. Valley Blvd., City of Industry, CA 91746 Phone (626) 890-7078	www.unitedstormwater.com
31	ERTEC Environmental Systems	Vince Morris	1150 Ballena Blvd., Suite 250, Alameda, CA 94501 Phone (510) 521-0724	www.ertecsystems.com
32	SCI Consulting Group	John Bliss	4745 Mangels Boulevard, Fairfield, CA 94534 Phone (707) 430-4300	www.sci-cg.com
33	Weston Solutions, Inc.	Michael Drennan	5817 Dryden Place, Suite 101, Carlsbad, CA 92008 Phone (760) 795-6900	www.westonsolutions.com
34	Golder Associates Inc.	Tim Bauters	425 Lakeside Drive, Sunnyvale, CA 94085 Phone (408) 220-9223	www.golder.com
35	Rinker Materials	Jim Johnston	23200 Temescal Canyon Road, Corona, CA 92883 Phone (909) 322-7604	www.rinkerstormceptor.com
36	Jensen Precast	Marcia Neese	825 Steneri Way, Sparks, NV 89431 Phone (775) 352-2700	www.jensenprecast.com
37	Roscoe Moss Company	Kevin McGillicuddy	4360 Worth St., Los Angeles, CA 90063 Phone (323) 263-4111	www.roscoemoss.com
38	Advanced Drainage Systems	Jeff Pierce	505 N. 51st Ave., Phoenix, AZ 85043 Phone (951) 796-2048	www.ads-pipe.com
39	Invisible Structures	Dustin Glist	1600 Jackson St., Suite 310, Golden, CO 80401 Phone (800) 233-1510	www.invisiblestructures.com
40	Coanda, Inc.	Steve Esmond	3943 Irvine Blvd., #327, Irvine, CA 92602 Phone (714) 389-2113	www.coanda.com
41	Reed & Graham, Inc.	Danny Reynaga	2033 San Elijo Ave. #102, Cardiff by the Sea, CA 92007 Phone (888) 381-0800	www.rginc.com/geo
42A	REM Inc.	Bob Marchant	2110 S. Grand Ave., Santa Ana, Ca 92705 Phone (714) 557-2676	www.remfilters.com
42B	Orange Coast Analytical, Inc.	Patrick Freeman	3002 Dow Avenue, Suite 532, Tustin, CA 92780 Phone (714) 832-0064	www.ocalab.com

## SUPER PREMIUM EXHIBITORS

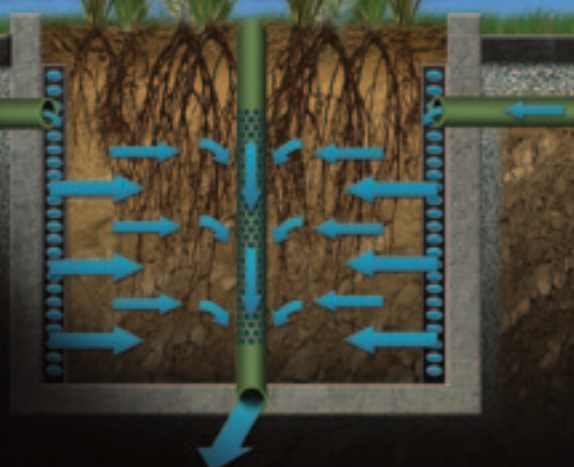




# A NEW DIRECTION IN BIOFILTRATION



**MWS-LINEAR 2.0**  
Washington State DOE Approved!



THE ONLY STORMWATER BIOFILTER TO UTILIZE

## HORIZONTAL FLOW

HORIZONTAL FLOW PROVIDES ADVANTAGES OVER DOWNWARD FLOW SYSTEMS:

- Minimized Clogging
- 2x Greater Surface Area
- Increased Retention Time



760.433.7640  
[www.ModularWetlands.com](http://www.ModularWetlands.com)

### MEDIA FILTERS FOR CURB OR GRATED INLETS

- Removes metals, nutrients & bacteria
- 5 Year Warranty
- Available in Custom Sizes



### NUTRIENT SEPARATING BAFFLE BOX

- Inline Design
- Minimal Head Loss
- Easy Maintenance

NJCAT



### DOWNSPOUT FILTER

- Inline Design
- Fail Proof High Flow Bypass
- IAMPO Approved



**BIO CLEAN**  
ENVIRONMENTAL SERVICES, INC.

760.433.7640  
[www.BioCleanEnvironmental.com](http://www.BioCleanEnvironmental.com)

# DownStream

Services, Inc.

## Full Service Storm Water Pollution Compliance and Maintenance

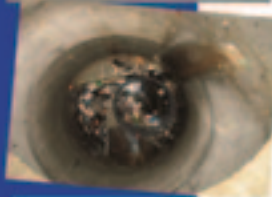
It is DownStream Services, Inc.'s (DSI) pledge to ensure the environmental integrity of California's storm water conveyance systems by addressing pollution prevention.

- Assessment of Water, Wastewater, and Storm Water Systems
- BMP Recommendations and Guidelines
- Inspection, Installation, and Cleaning Services
- Lab Analysis, Disposal, and Manifesting
- Compliance and Maintenance Verification
- 24/7 Emergency Spill Response and Repair Service

DSI has become a supplier, certified installer, and maintenance provider of the Fabco Industries, Inc. storm water product line. With this recent addition, DSI is well positioned to meet the needs of the California storm water market and is proud to bring the added value of green technology to its customer base.

- Hydrodynamic Separator Units
- Storm Drain Filters
- Wet Vaults
- Catch Basins
- Detention and Retention Basins
- Biological Swales
- Fabco StormSack Catch Basin Insert
- Fabco StormBasin Catch Basin Insert
- Fabco StormSafe Helix Filter (Pathogens, Oils and Grease)

Visit the DSI-Fabco Booth #13



Kimberly Carr  
Storm Water Division Manager  
DownStream Services, Inc.  
Office: 760-746-2544  
Cell: 760-457-6879  
kimc@downstreamservices.com  
www.downstreamservices.com

Scott Gammon, P.E., CPEM  
Field Engineering Manager  
Fabco Industries, Inc.  
207-881-2795  
sgammon@fabco-industries.com  
www.fabco-industries.com



## LID STORMWATER MANAGEMENT PRODUCTS

### Filtrerra Stormwater Bioretention Systems



**VISIT OUR  
JOINT BOOTH,  
Booth #1**

[www.filtrerra.com](http://www.filtrerra.com)

P 804-752-1449 | F 804-798-8400



### Bio-Mod Modular Bioretention System



[www.kristar.com](http://www.kristar.com)

P 800-579-8819 | F 707-524-8188



# Leave a greener footprint on your site



Subsurface Infiltration



Biofiltration & Filtration



Hydrodynamic Separation



Rainwater Harvesting



Achieve your runoff reduction and water quality goals with UrbanGreen stormwater solutions from Contech.

Discover our building block approach at [www.ContechES.com/urbangreen](http://www.ContechES.com/urbangreen)



[www.ContechES.com](http://www.ContechES.com) • 800.338.1122

## EXPERT TANK, PUMP & FILTRATION RENTAL SOLUTIONS.



**BakerCorp** knows temporary storage, water transfer and filtration system rental solutions. From system design, setup and removal, to media sales and service you can always count on our expert rental solutions team.

Our unrivaled experience and expansive world-class inventory guarantee seamless tank, pump and filtration solutions for any of your project needs.

**For project assistance or to request a quote contact your local rental applications expert today!**

**BakerCorp San Francisco, CA**  
2121 Piedmont Way  
Pittsburg, CA 94565  
P: (925) 439-8251  
F: (925) 439-7718

1-800-BAKER12 / [www.bakercorp.com](http://www.bakercorp.com)







TETRA TECH



## MAKING A DIFFERENCE IN A COMPLEX WORLD

Tetra Tech has more than 40 years of experience delivering innovative water resources solutions. [www.tetrattech.com](http://www.tetrattech.com)

- Stormwater Management
- BMP Optimization and Design
- TMDL Implementation
- Watershed Planning
- Sustainable Stormwater Engineering
- Outreach and Education

complex world | CLEAR SOLUTIONS™

Numerous offices throughout California  
Email [stormwater@tetrattech.com](mailto:stormwater@tetrattech.com) for more information



cleanwater

PROGRAM

alameda county

Protecting Alameda County  
Creeks, Wetlands & the Bay

[cleanwaterprogram.org](http://cleanwaterprogram.org)



## ▶ WE SEE STORMWATER SOLUTIONS WHERE OTHERS DON'T. JUST ASK GOLDER.

Golder's California stormwater specialists have expertise in all phases of stormwater management and compliance. We draw on our experience to apply effective solutions during permitting and routine BMP maintenance and inspection services, and through development of BMP recommendations and treatment options. Golder achieves results that meet our clients' needs.

**Engineering Earth's Development, Preserving Earth's Integrity.**

### Golder Associates' California Offices:

Irvine

(714) 508-4400

Tony Augello, PhD, PE

Sacramento

(916) 786-2424

Ed Childers, PE

Sunnyvale

(408) 220-9223

Tim Bauters, PhD, PE

Walnut Creek

(925) 956-4800

Ken Chin, PE

[solutions@golder.com](mailto:solutions@golder.com)  
[www.golder.com](http://www.golder.com)



**aquatic bioassay & consulting laboratories, inc**  
*'quality marine & freshwater biological services since 1988'*

- Aquatic & Sediment Toxicology
- Watershed Assessments
- Coastal & Harbor Marine Sciences
- Taxonomic Services



**aquatic bioassay & consulting laboratories, inc**  
 25 NORTH OAK AVENUE, LAYTON, UT 84041

**WA Weiss Associates**  
 Environmental Science, Engineering, and Management

**Delivering long-term value through customized solutions**

- Stormwater Compliance and Permitting
- Source and Treatment Control Design
- Storm Water Management/ Pollution Prevention Plans
- Audits, Inspections and Monitoring



CONSTRUCTION • INDUSTRIAL  
 MUNICIPAL • DEVELOPMENT

**We do what's right for you**

WWW.WEISS.COM    EMERYVILLE • MOUNTAIN VIEW • LIVERMORE

# Protect it. Deliver it. Solve it.



## **Water Quality. Strategic Solutions. Discharge Permitting.**

At the forefront of proceedings related to Section 303(d) waterbody impairment listings, TMDLs, Basin Plan Amendments, NPDES Permit actions, Section 401 certifications, CEQA, and general surface and stormwater related water quality issues under the federal Clean Water Act and the State Porter-Cologne Water Quality Control Act. No matter your need—Nossaman *makes it happen*.





## Booth 6

### Storm & Irrigation Water

**>99% Effective Pollutant Control**

300ppb to <5ppb In <60 Seconds TCE, PCE, PAH,

PCB, Gas, Oil, Toluene, BTEX, Benzenes,  
Diesel, Atrazine, Chlorpyrifos, Diazonon, Xylene,  
Phosphate, Nitrate, Perchlorate, Pharmaceuticals

**MS4 P.O.C Pollutant Control Remediation**  
AC&E, Inc. Absorb, Concentrate & Eliminate

[www.WaterAce.net](http://www.WaterAce.net)



We invite you to consider the many sponsorship, advertising and exhibiting opportunities for the upcoming 2013 CASQA Conference in Squaw Valley, Lake Tahoe.

[www.StormwaterConference.com](http://www.StormwaterConference.com)

## CH2MHILL



*Dominguez Gap Wetlands, Long Beach, CA*

### Creating Innovative and Sustainable Stormwater Solutions for Our Clients

With more than ten offices in California, our engineers, scientists, and planners work collaboratively to address the needs of our clients including:

- Sustainable Development
- Stormwater Quality
- TMDL Studies / Implementation
- LID Studies / Design
- BMP Design

[CH2MHILL.com](http://CH2MHILL.com)

© 2010 CH2M HILL  
WB00914101934065CO

## URS

### Certified Experts and Trainers

*Solving Stormwater Compliance Puzzles for Nearly 70 Years*



BMP Pilot Studies, Research, Design, Implementation, Monitoring  
Erosion and Sediment Control Management  
Hydrology and Hydraulics  
Hydromodification Management  
Stormwater Compliance and Permitting  
Stormwater Management Programs  
Stormwater Monitoring, Analysis, and Reporting  
Stormwater Pollution Prevention Plans (Industrial & Construction)  
TMDL Development & Implementation  
Training Programs  
Watershed Management

URS CORPORATION | 858.812.9292 | [www.urs.com](http://www.urs.com)



## NOTES



### CASQA Conference Subcommittee

CASQA would like to thank the Conference Subcommittee members for coordinating this year's conference.

#### Conference Co-Chairs

Tanya Bilezikjian  
Gene Estrada

#### Accommodations

April Eades / Event Architects

#### A/V Coordinator

Jamie Aderhold  
Jason Lawrence / Advanced Media

#### Awards Coordinators

Jill Bicknell  
Gerhardt Hubner

#### CEU Coordinator

Daniel Apt

#### Exhibitor Coordinator

Karen Ashby

#### Graphic Design

Bev Manzano / Beverly Catli Design

#### Meals Coordinator

Tanya Bilezikjian

#### Moderator Coordinator

Lisa Haney

#### Overall Workshop Coordinator

Nancy Gardiner

#### Workshop Coordinators

Daniel Apt  
Michael Drennan  
Jeff Endicott  
Nancy Gardiner  
Sharon Gosselin  
Anna Lantin  
Matt Lentz  
Sandy Mathews  
Andre Monette  
Richard Watson

#### Program Coordinators

Bill Flores  
Kevin McGillicuddy

#### Promotions Coordinator

Chris Crompton

#### Social Event Coordinator

Karen Henry

#### Sponsorship Coordinator

Matt Lentz

#### Website Coordinator

Stephanie Reyna-Hiestand

#### Registration Coordinator

Natalie Dennis / Event Architects

#### Registration Website

April Eades / Event Architects

#### CASQA Event Coordinator

Amy Porter

#### CASQA Executive Assistant

Shelley Larson

#### CASQA Web Designer

Adam Humphrey

#### CASQA Executive Director

Geoff Brosseau

#### CASQA Treasurer

Jason Uhley

#### CASQA Chair

Richard Boon

#### Members-at-Large

Tom Lawrence  
Nicole West

## JOIN US AGAIN

Mark your calendars for the  
9th Annual CASQA Conference  
September 9 to 11, 2013  
at Squaw Valley, Lake Tahoe

Photo by Roger Ashty

**California Stormwater  
Quality Association**

P.O. Box 2105

Menlo Park, CA 94026-2105

Phone (650) 366-1042

[www.casqa.org](http://www.casqa.org)



Scan with your smartphone to  
view the conference agenda.

