

CASQA 7th Annual Conference

September 26-28, 2011 • Hyatt Regency Monterey
Monterey, California • www.casqa.org



STORMWATER MANAGEMENT

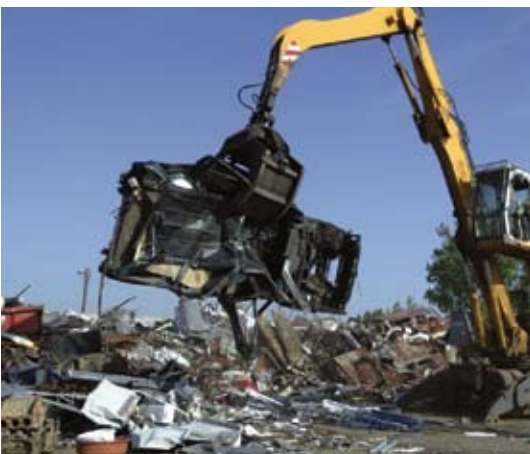
PRACTICAL SOLUTIONS TO
CHANGING CONDITIONS

CONFERENCE PROGRAM

AMEC is leading the way in ...

- Comprehensive stormwater program management
- Developing/Implementing compliance strategies
- Treatment control engineering/design
- Litigation/Regulatory support
- Stormwater BMP design
- TMDL compliance/strategic planning
- Stormwater monitoring programs
- BMP effectiveness assessments
- Hydraulic/Hydrologic analysis
- Infiltration BMP implementation and monitoring
- Modeling/GIS integration
- Water supply planning
- Watershed planning/management
- Stormwater funding
- Low impact development (LID) design
- Areas of special biological significance
- Receiving water studies
- Sediment quality objectives investigations
- Biological assessment studies

The added strengths of MACTEC and Geomatrix reinforce AMEC's position as a leader in stormwater science, compliance, and engineering



AMEC has a strong presence in California. For more information contact us at:

| | |
|---------------|----------------|
| Corona | (951) 273.7400 |
| Eureka | (707) 444.7800 |
| Fresno | (559) 264.2535 |
| Irvine | (949) 224.0050 |
| Los Angeles | (323) 889.5200 |
| Newport Beach | (949) 642.0245 |
| Oakland | (510) 663.4100 |
| Petaluma | (707) 793.3800 |
| Sacramento | (916) 636.3200 |
| San Diego | (858) 278.3600 |
| San Francisco | (415) 543.8422 |

amec.com

2011 CASQA CONFERENCE

The California Stormwater Quality Association (CASQA) is the largest professional association dedicated to stormwater quality issues. Since 1989, CASQA has assisted municipalities, special districts, businesses, the State of California, and the United States Environmental Protection Agency in developing and implementing effective stormwater quality management programs.

The CASQA Conference has established itself as a “must attend” training event each year on the calendars of stormwater professionals, drawing the most experienced practitioners in the field from across the country. The 7th Annual CASQA Conference will again offer a full program of training workshops, presentations, and exhibits addressing a wide range of municipal, industrial, and construction NPDES stormwater permit requirements.



THE CONFERENCE IS BEING HELD AT THE HYATT REGENCY MONTEREY, 1 OLD GOLF COURSE ROAD, IN MONTEREY, CALIFORNIA, 93940, FROM SEPTEMBER 26–28, 2011.

About CASQA CASQA is a non-profit professional member association dedicated to the advancement of stormwater quality management through collaboration, education and outreach, implementation guidance, regulatory review, and scientific assessment.

Join CASQA Regular or affiliate membership in CASQA is open to organizations and individuals in the stormwater field, whether holders of NPDES permits or not. If you are not currently a member, by joining now, you can receive substantial reductions on the upcoming conference and webcast as well as receiving all the other benefits of membership (newsletters, downloadable products, quarterly meetings, etc.). CASQA membership provides substantial benefits even if you are based outside California. It's the right time to be a member of the premier professional association dedicated to the advancement of stormwater quality management, science, and regulation. Join now at www.casqa.org



PHOTOS: © CITY OF MONTEREY (TOP RIGHT); COURTESY OF HYATT REGENCY MONTEREY (BOTTOM RIGHT)

PHOTOS ON COVER AND RIGHT BY JEREMY BURNS, MACTEC



MONDAY, September 26, 2011

In-Depth Workshops

CASQA will be holding 8 half-day workshops (workshops 1-4 in the morning from 8:30 to 11:45 a.m., and workshops 5-8 in the afternoon from 1:30 to 5:00 p.m. Pacific Time). You can attend the workshops in person or can view the workshops via webcast.

1. Implementing Low Impact Development (LID) – Feasibility and Design Criteria

Will address the feasibility of implementing LID mandates as the first part of a day-long LID focus.

2. General Construction Permit – Linear Underground/Overhead Projects (LUPs)

Will take an in-depth look at the practical aspects of implementing linear projects and Attachment A requirements with regard to risk determination, monitoring programs and annual reporting.

3. Stormwater 101 – Program Fundamentals
Will provide municipal agency staff, consultants, and others with a valuable refresher on the fundamental municipal stormwater management requirements, regulatory framework, and program implementation approaches.

4. General Industrial Permit – Compliance and BMP Implementation

Will provide an update on the status of the draft industrial general permit and walk attendees through key aspects of industrial stormwater compliance from SWPPP development and implementation to monitoring and selection of appropriate treatment control technologies.

5. Implementing LID – Case Studies on Green Streets and Drainage Retrofits

Will contain a series of LID case studies and an introduction to the California LID Portal.

6. General Construction Permit – Sampling Protocols and SMARTS Reporting

Will provide a basic overview of available SWAMP field sampling protocols that may be employed for General Construction Permit required sampling, as well as training for uploading monitoring data for *ad hoc* reporting in SMARTS.

7. Phase 2 General Permit – Implementation Challenges

Will cover compliance implementation challenges, provide an overview of the permit and next steps from State Board staff, and feature a panel discussion on key permit issues.

8. Legal Framework – Effluent Limits and Recent Court Decisions

Will provide insight into the legal requirements that regulatory agencies must follow when adopting and implementing water quality based and technical effluent limits in NDPES Permits and a discussion of recently decided and pending litigation involving the Clean Water Act and Porter Cologne.

**TUESDAY AND WEDNESDAY
September 27 – 28, 2011**

Keynote Address and Technical Program

A keynote address by Dr. Stephen Palumbi, a Qualified SWPPP Developer (QSD) / Qualified SWPPP Practitioner (QSP) forum and over 80 concurrent session presentations will provide two packed days of stormwater information. Many of the leading stormwater practitioners in the nation will be participating and making presentations.



PHOTOS BY STEVEN FRASHER & ASSOCIATES

CASQA 2010 CONFERENCE IN
RANCHO MIRAGE

Stormwater

Concurrent sessions will follow ten conference thematic tracks (see pages 9-13 for detailed agendas):

1. Construction Permit: This track will focus on lessons learned during the first year under the reissued California statewide permit and recent advancements in construction permits nationwide, including numeric effluent limits and numeric action levels, post-construction requirements, and risk assessment.

2. Industrial Permit: This track will focus on progress made on the forthcoming California statewide permit reissuance and related issues, including innovative stormwater compliance strategies/case studies, BMP effectiveness evaluations, and integrating industrial discharge approaches.

3. Modifying Public Behavior: This track will focus on the challenges and solutions to changing public and business behavior, including public education, training, inspections, and enforcement.

4. Program Assessment: This track will focus on strategies to determine the effectiveness of stormwater programs, including assessments of monitoring data, BMP effectiveness, effluent limits, numeric action levels, changes in polluting behaviors, and reductions in pollutant loading.

5. Regulations, Permits and Policies: This track will focus on the latest developments in stormwater regulations, policies and permits. Topics include effluent limitations, receiving water limitations, the definition of maximum extent practicable, toxicity policy, Areas of Special Biological Significance, Total Maximum Daily Loads (TMDLs), basin planning issues, and 303(d) listings.

6. Scientific Advances: This track will focus on monitoring and the latest research into stormwater management. Topics include data collection and evaluation, pollutant source tracking, emerging pollutants, new technologies, new monitoring and assessment tools, stormwater impacts, and economic assessments.

7. Stormwater Treatment: This track will focus on the latest approaches in BMP designs, guidance, and studies. Topics include BMP design and implementation, including case studies, facility retrofitting, regional treatment, and multi-purpose facilities.

8. Sustainable Development: This track will focus on site-specific and watershed scale approaches to addressing LID and hydro-modification requirements. Topics include integrated regional planning, watershed planning concepts, green streets, smart growth, and stormwater harvesting and reuse.

9. TMDLs in MS4 Permits: This track will focus on the impact of TMDL allocations as requirements in MS4 permits. Topics include TMDL development approaches, allocations as effluent limits or BMP programs, case studies on implementation, and non-point sources impacting the MS4.

10. True Source Control: This track will focus on reducing or eliminating products and chemicals that are known to pollute and impair streams, lakes and rivers. Topics include pesticide management and regulation, product substitutions, producer responsibility, zero waste policies, green chemistry, runoff elimination and conservation coordination, and multi-jurisdictional approaches.

Continuing Education Credits

Continuing Education Credits are available for attendees at the CASQA Conference in the following certifications:

» **American Institute of Certified Planners (AICP)** CASQA is an approved AICP Certification Maintenance (CM) Provider. The Annual Conference, including the workshops, has been submitted and is awaiting approval as a multipart event with credits available based on contact hours. AICP certified planners can record credits by logging onto their CM Log and adding the credits from the calendar. Any issues with logging the credits should be sent to AICPCPM@planning.org.

» **Certified Professional in Erosion and Sediment Control (CPESC); Certified Professional in Storm Water Quality (CPSWQ); Certified Erosion, Sediment and Stormwater Inspector (CESSWI)** Professional Development Units (PDUs) are available for attendance at the CASQA Conference, including the workshops. No sign-in sheets, forms, or certificates are required at the CASQA Conference.

» **California Water Environment Association (CWEA)** CWEA contact hours are available for attendance at the CASQA Conference, including the workshops. A CWEA contact hour verification form must be filled out by those requesting CWEA contact hours at the registration table and CASQA will issue a Certificate of Completion.

» **State Bar of California** Minimum Continuing Legal Education (MCLE) credits are being requested from the State Bar of California.

Management

LARRY WALKER ASSOCIATES

LARRY
WALKER



ASSOCIATES

Science. Policy.
Solutions.

Environmental engineering and consulting.
Providing innovative water quality solutions
throughout California for 30 years.

Home Office | Davis, CA | 530.753.6400
with regional offices in Oakland, Santa Monica, San Jose and Ventura

www.lwa.com

GOLD STORMWATER STEWARD

RBF
CONSULTING



www.rbf.com

Integrating People, Land and Water

Engineering / Science

Outreach / Education

Stormwater Quality

Structural BMP Design

NPDES Permit Compliance

Construction Stormwater Compliance

Regional Flood Protection

Watershed / Stream Corridor Planning

Urban Drainage Facilities / Master Planning



GOLD STORMWATER STEWARD

Build it. Plan it. Solve it.
Develop it. Permit it.
Defend it. Protect it.
Change it. **Win it.**

MAKING IT HAPPEN.

No matter what your *it* is, Nossaman gets results. Rely on a law firm that understands your business and delivers effective solutions. You define success. Together, we make it happen.



GOLD STORMWATER STEWARD



aquatic
bioassay &
consulting



- ◆ Aquatic & Sediment Toxicology
- ◆ Coastal Marine Science
- ◆ Watershed Assessments
- ◆ Taxonomic Services



laboratories, inc 29 north olive ventura, ca 93001 (805) 643 5621

GOLD STORMWATER STEWARD

2011 CONFERENCE SPONSORS AND ADVERTISERS

CASQA would like to thank the following sponsors and advertisers for supporting the CASQA 2011 Conference.

PLATINUM
STORMWATER
STEWARDS



GOLD
STORMWATER
STEWARDS



SILVER
STORMWATER
STEWARDS



SILVER
STORMWATER
SUPPORTER



HOST
PROGRAMS



VENDOR RECEPTION
SPONSOR



LUNCH
SPONSORS



BREAK
SPONSORS



CASQA WORKSHOP AGENDAS MONDAY, SEPTEMBER 26, 2011

| | | | | |
|--|--|---|--|--|
| 7:30a - 5:30p | | | | |
| REGISTRATION DESK (2nd Floor Lobby) | | | | |
| 12:00 - 5:00p | | | | |
| EXHIBITS (Exhibitor Ballroom) | | | | |
| Room | WORKSHOP 1 Big Sur | WORKSHOP 2 Cypress | WORKSHOP 3 Spyglass | WORKSHOP 4 Windjammer |
| WORKSHOP | Implementing LID: FEASIBILITY AND DESIGN CRITERIA | General Construction Permit: LINEAR UNDERGROUND / OVERHEAD PROJECTS | Stormwater 101: PROGRAM FUNDAMENTALS | General Industrial Permit: COMPLIANCE AND BMP IMPLEMENTATION |
| 8:30 - 10:00 | <p>Welcome/Opening Remarks and Overview <i>Richard A. Watson, AICP : Richard Watson & Associates</i></p> <hr/> <p>Assessing Regulatory Barriers to LID Implementation—<i>Juli Beth Hinds : Tetra Tech</i></p> <hr/> <p>How Does 5% EIA "Pencil Out?" Ventura's 5% EIA Requirement Through Three Case Studies — <i>Arne Anselm : Ventura County Watershed Protection District</i></p> <hr/> <p>Soil Media Specifications for Biofiltration <i>Dan Cloak : Dan Cloak Environmental Consulting</i></p> | <p>Welcome/Opening Remarks and Overview of Construction General Permit (CGP) Attachment A – Differences Between Linear and Traditional Projects <i>Dianne Franks : Southern California Gas Company</i></p> <hr/> <p>Linear Underground Projects (LUP) Risk Determinations (CGP Attachment A.1) <i>Kadi Whiteside : ETIC Engineering</i></p> <hr/> <p>Monitoring and Reporting Program <i>Tanya Bilezikjian : RBF Consulting</i></p> | <p>Welcome/Opening Remarks and Overview of CASQA Training Subcommittee <i>Geoff Brosseau : CASQA; Carmel Brown : CKB Environmental Consulting; Daniel Apt : RBF Consulting</i></p> <hr/> <p>Stormwater 101 - The Basics</p> <ul style="list-style-type: none"> - Key Terms - Pollutants and Sources - Impacts – Impaired waters - BMP Toolkit <p><i>Brian Currier : Sacramento State University</i></p> | <p>Welcome/Opening Remarks and Overview of Industrial Permit Compliance <i>Matt Lentz : AMEC Environment and Infrastructure</i></p> <hr/> <p>Industrial Permit/Regulatory Update <i>Greg Gearheart : State Water Resources Control Board</i></p> <hr/> <p>Development and Implementation a Compliant SWPPP <i>Tina Lau : ETIC Engineering</i></p> <hr/> <p>Industrial Stormwater Monitoring <i>Ed Othmer : URS Corporation</i></p> |
| 10:00 - 10:15 | | | | |
| BREAK (1st Floor Lobby) | | | | |
| 10:15 - 11:45 | <p>Application of LID BMP Technical Feasibility Guidelines to a Project in Los Angeles County <i>Lisa Austin, Kelly Havens : Geosyntec Consultants</i></p> <hr/> <p>Feasibility of Harvest and Use, Infiltration, and Evapotranspiration in the San Francisco Bay Area — <i>Jill Bicknell : EOA, Inc.</i></p> <hr/> <p>Economic Analysis and Feasibility of LID Best Management Practices for Use in Orange County, California: A Presentation of Project Cost Estimation Data and Cost Benefit Parameters for Use in Evaluating Feasible LID BMP Combinations <i>Mark Grey : Construction Industry Coalition on Water Quality; Richard Boon : Orange County Public Works</i></p> <hr/> <p>Closing Remarks — <i>Richard Watson, AICP : Richard Watson & Associates, Inc.</i></p> | <p>Annual Reporting Requirements <i>Jeanne Duarte : Storm Water Resources, LLC</i></p> <hr/> <p>Q&A Panel Discussion <i>Tanya Bilezikjian : RBF Consulting; Kadi Whiteside : ETIC Engineering; Jeanne Duarte : Storm Water Resources, LLC; Greg Gearheart (invited) : State Water Resources Control Board</i></p> <hr/> <p>Closing Remarks <i>Dianne Franks : Southern California Gas Company</i></p> | <p>Regulatory Background and Updates</p> <ul style="list-style-type: none"> - Federal and State Regulations and Initiatives - EPA Stormwater Rulemaking - NPDES Permits <ul style="list-style-type: none"> » Municipal Phase 1 » Municipal Phase 2 » Industrial General Permit and General Construction Permit – Relationship to Municipal Permits <p><i>David Wampler : USEPA; Rebecca Winer-Skonovd : Larry Walker Associates</i></p> <hr/> <p>Program Elements Closing Remarks <i>Carmel Brown : CKB Environmental Consulting; Daniel Apt : RBF Consulting</i></p> | <p>Treatment Systems – Design Considerations at Industrial Sites <i>Timothy Simpson : AMEC Environment and Infrastructure</i></p> <hr/> <p>Storm Water Treatment: Technologies for Industrial Sites <i>Cal Noling : StormwaterRx LLC</i></p> <hr/> <p>Closing Remarks <i>Matt Lentz : AMEC Environment and Infrastructure</i></p> |
| 11:45 - 1:30 | | | | |
| EXHIBITOR FOCUS (Exhibitor Ballroom) AND LUNCH (Main Hotel – Outdoor Terrace) | | | | |
| Room | WORKSHOP 5 Big Sur | WORKSHOP 6 Cypress | WORKSHOP 7 Spyglass | WORKSHOP 8 Windjammer |
| WORKSHOP | Implementing LID: CASE STUDIES ON GREEN STREETS AND DRAINAGE RETROFITS | General Construction Permit: SAMPLING PROTOCOLS AND SMARTS REPORTING | Phase 2 General Permit: IMPLEMENTATION CHALLENGES | Legal Framework: EFFLUENT LIMITS AND RECENT COURT DECISIONS |
| 1:30 - 3:00 | <p>Welcome/Opening Remarks and Overview <i>Richard A. Watson : Richard Watson & Associates</i></p> <hr/> <p>The Evolution of Green Streets in Santa Monica <i>Neal Shapiro : City of Santa Monica</i></p> <hr/> <p>Cordonces Creek Rain Garden at 6th Street Crossing (Berkeley and Albany)—<i>Dan Cloak : Dan Cloak Environmental Planning</i></p> <hr/> <p>San Pablo Avenue Rain Gardens (El Cerrito) <i>Jerry Bradshaw : City of El Cerrito</i></p> | <p>Welcome/Background CGP Sampling Requirements <i>Chris Campbell : Lawrence Livermore National Laboratory</i></p> <hr/> <p>SWAMP Field Sampling Protocols:</p> <ul style="list-style-type: none"> - Sampling locations - Equipment calibration - Representative sampling - Sample handling - QA/QC and data management - Health and safety <p><i>Karen Worcester, Mary Hamilton : Central Coast Regional Water Quality Control Board</i></p> | <p>Welcome/Opening Remarks and Overview of CASQA Training and Phase 2 Subcommittees <i>Daniel Apt : RBF Consulting</i></p> <hr/> <p>CASQA Comments on the Phase 2 Permit and Summary of Key Issues <i>Rebecca Winer-Skonovd : Larry Walker Associates; Gerald Montgomery : Montgomery & Associates</i></p> <hr/> <p>Permit Post Construction Requirements and Implementation Challenges — <i>Darla Inglis : UC Davis Extension; Cathleen Garnand : County of Santa Barbara</i></p> <hr/> <p>Permit Monitoring Requirements <i>Chris Sommers : EOA, Inc; Terri Fashing : County of Marin</i></p> | <p>Welcome/Opening Remarks and Overview <i>Andre Monette : Best Best & Krieger LLP</i></p> <hr/> <p>Effluent Limits: Legal Requirements for Development and Implementation</p> <ul style="list-style-type: none"> - Federal Regulatory Requirements - TBELS v. WQBELS - Incorporation into NPDES Permits at the State Level - Use in the Draft Industrial Permit - Use in Construction Permits <p><i>Katharine Wagner : Downey Brand LLP; Shawn Hagerly : Best Best & Krieger LLP; Jeffrey S. Longworth : Barnes & Thorneburg LLP</i></p> |

| 3:00 - 3:30 BREAK (Exhibitor Ballroom) | | | | |
|--|---|---|---|---|
| Room | WORKSHOP 5 Big Sur | WORKSHOP 6 Cypress | WORKSHOP 7 Spyglass | WORKSHOP 8 Windjammer |
| WORKSHOP | Implementing LID: CASE STUDIES ON GREEN STREETS AND DRAINAGE RETROFITS | General Construction Permit: SAMPLING PROTOCOLS AND SMARTS REPORTING | Phase 2 General Permit: COMPLIANCE FOR TRADITIONAL AND NON-TRADITIONAL PROGRAMS | Legal Framework: EFFLUENT LIMITS AND RECENT COURT DECISIONS |
| 3:30 - 5:00 | Design Challenges for Urban Green Streets in Los Angeles <i>Calvin Abe : AHBE Landscape Architects</i> | Field Sampling & Demonstrations: Field Monitoring (pH and Turbidity) Sample collection <i>Mary Hamilton : Central Coast Regional Water Quality Control Board</i> | Permit Industrial/Commercial Requirements and Implementation Challenges <i>Kelye McKinney : City of Roseville</i> | NRDC v. County of Los Angeles and Cities of Arcadia v. State Water Resources Control Board: New Law or More of the Same? - Overview of recent 9th Circuit and California Court of Appeals decisions - Overview of Pending Mandates Litigation - Discussion of Perceived Implications <i>David Burhenn ; Burhenn & Gest LLP; Mary Lynn Coffey : Nossaman LLP</i> |
| | City of San Diego Sustainable Canyons Program to Meet TMDL Challenges <i>David Pohl : Weston Solutions</i> | SMARTS Ad Hoc Reporting <i>Russ Foster: Pulte</i> | State Board Phase 2 Permit Background, Summary of Comments, and Next Steps <i>Eric Bernsten, Christine Sotelo : StateWater Resources Control Board</i> | |
| | The California LID Portal <i>Daniel Apt : RBF Consulting</i> | Closing Remarks <i>Chris Campbell : Lawrence Livermore National Laboratory</i> | Speaker Panel Discussion of Permit Issues <i>All Speakers</i> | Closing Remarks <i>Andre Monette : Best Best & Krieger LLP</i> |
| | Closing Remarks <i>Richard Watson : Richard Watson & Associates</i> | | Closing Remarks <i>Carmel Brown : CKB Environmental Consulting; Daniel Apt : RBF Consulting</i> | |
| 5:00 - 6:00 EXHIBITOR FOCUS AND WELCOME RECEPTION (Exhibitor Ballroom) | | | | |
| 6:30 - 10:30 CASQA'S MONTEREY BEACH PARTY | | | | |



Working Together to
improve our water resources

Geosyntec
consultants
geosyntec.com

**Providing value-driven and sustainable solutions to
the most challenging stormwater quality problems**

Municipal • Industrial
Development • Construction

Huntington Beach • Los Angeles • Oakland • Pasadena • Portland • Riverside • Santa Barbara • San Diego • Seattle

GOLD STORMWATER STEWARD

CASQA TECHNICAL PROGRAM AGENDA TUESDAY, SEPTEMBER 27, 2011

| | | | | | |
|--|--|--|---|---|--|
| 7:30a - 5:30p | | | | | |
| REGISTRATION DESK (2nd Floor Lobby) | | | | | |
| 8:00a - 7:30p | | | | | |
| EXHIBITS (Exhibitor Ballroom) | | | | | |
| PLENARY SESSION 8:30 - 9:40 | Welcome and Opening Remarks – Scott Taylor, Chair, CASQA Keynote Address – Dr. Stephen Palumbi, Director, Stanford University’s Hopkins Marine Station [Monterey Grand Ballroom] | | | | |
| 9:40 - 10:00 | | | | | |
| BREAK (Exhibitor Ballroom) | | | | | |
| Room | TRACK A Spyglass | TRACK B Oak Tree | TRACK C Windjammer | TRACK D Big Sur | TRACK E Cypress |
| SESSION 1 | Regulations, Permits & Policies | Modifying Public Behavior | Scientific Advances | True Source Control | Construction Permit |
| Moderator | Katharine Wagner : Downey Brand | Gerhardt Hubner : Ventura County Watershed Protection District | Armand Ruby : Armand Ruby Consulting | Richard Watson : RWA, Inc. | Carmel Brown : CKB Environmental Consulting |
| 10:00 - 10:30 | Leveraging the Natural Environment as Treatment for Highway Runoff Within the Lake Tahoe Basin Leslie Case : California Department of Transportation; Mark Rayback, Jennifer Hanson : Wood Rodgers | The Our Water Our World Program Still Making Changes After Fourteen Years Annie Joseph : Ann Joseph Consulting | Potential Impacts from Short-Duration Exposures to Stormwater Runoff on the Rocky Intertidal Community of the La Jolla ASBS and Implications for Protecting Beneficial Uses Steve Gruber, Dan McCoy : Weston Solutions; Ruth Kolb : City of San Diego | A Stop on the Way to True Source Control Kelly Moran : TDC Environmental, LLC | Devil in the Details: Active Treatment Systems on Large Construction Projects Khalil Abusaba : Brown and Caldwell |
| 10:35 - 11:05 | Numeric Nutrient Criteria – Another Path to Preventing Eutrophication Kristina Schneider, Ann Shortelle : AMEC | Influencing Others Through Actions (and the Power of Social Media) Stephen Groner : S. Groner Associates | Mercury and Other Pollutants of Concern in Stormwater from the Guadalupe River Watershed, San Jose California: Findings from 5 Years of Loads Monitoring Lester McKee, Jennifer Hunt, Ben Greenfield : San Francisco Estuary Institute | True Source Control – After SB 346: Implications of Other Copper Sources David Renfrew : Weston Solutions | Rising to the Challenge – How Stanford University Enhanced Their Existing Stormwater Construction Program to Meet the New Construction General Permit in an Effective and Efficient Manner Tracy Ingebrigtsen : Stanford University |
| 11:10 - 11:40 | Developing an Effective Model Watershed Infiltration and Hydromodification Management Plan (WIHMP) for MS4 Compliance Bruce Phillips : PACE; Richard Boon : County of Orange | San José’s Odyssey - Reducing Single-Use Carryout Bags Emy Mendoza : City of San Jose | Stormwater Toxicity Challenges and Innovative Solutions – Case Study at UCSD’s Scripps Institution of Oceanography Chris Stransky : AMEC | Clean Marinas, Clean Water: The Port of San Diego’s Model Program to Address Copper Pollution in Marinas Stephanie Bauer : Port of San Diego | Enforcement Leading to Compliance – The Saga Continues Chandra Thomas, Teresa Jakeway : County of Riverside |
| ALTERNATE | Ionic Strength Impacts to a Freshwater Creek Steve Gruber, William Isham : Weston Solutions | Doo Diligence: A Research Driven Approach to Pet Owner Outreach Jennifer Nichols Kearns : City of San Diego; Jennifer Tabanico : Action Research | Taking the Leap into Stressor Identification – Further Evaluation of Reduced Biological Integrity in a Large Northern California Urban Creek Paul Randall : Santa Clara Valley Urban Runoff Pollution Prevention Program | | Challenges of Implementing the New Construction General Permit James Honniball : AMEC |
| 11:40 - 12:00 | | | | | |
| EXHIBITOR FOCUS (Exhibitor Ballroom) | | | | | |
| 12:00 - 1:30 | | | | | |
| LUNCH AND CASQA AWARDS PROGRAM (Monterey Grand Ballroom) | | | | | |

KEYNOTE SPEAKER

Dr. Stephen Palumbi

Dr. Stephen Palumbi is the Director of Stanford University's Hopkins Marine Station, a Pew Fellow in Marine Conservation, and a senior fellow at the Woods Institute for the Environment. His talk will be based on his recently published book entitled "The Death and Life of Monterey Bay: A Story of Revival." It is a good-news environmental story about the difference that ordinary citizens can make in creating diverse, sustainable ecosystems and economies. Signed copies of the book will be available for purchase.



CASQA TECHNICAL PROGRAM AGENDA TUESDAY, SEPTEMBER 27, 2011 (cont.)

| Room | TRACK A Spyglass | TRACK B Oak Tree | TRACK C Windjammer | TRACK D Big Sur | TRACK E Cypress |
|--|--|--|--|--|---|
| SESSION 2 | Industrial Permit | TMDLs In MS4 Permits | Program Assessment | Stormwater Treatment | Sustainable Development |
| Moderator | Matt Lentz : AMEC | Chris Crompton : County of Orange | Scott Taylor : RBF Consulting | Nicole West : LSA Associates, Inc. | Lisa Haney : Orange County Sanitation District |
| 1:30 - 2:00 | Sector-Specific Permit Through Innovative Stakeholder Process <i>Michael Adackapara : Santa Ana Regional Water Quality Control Board;</i> <i>Garry Brown : Orange County Coastkeeper;</i> <i>George Adams : SA Recycling</i> | Optimizing Municipal Operations and Maintenance: BMP Tools for Addressing PCBs and Hg TMDL Targets in the San Francisco Bay Area <i>Peter Mangarella : Geosyntec Consultants</i> | Are We Protecting Groundwater? <i>Mark Pumford : City of Oxnard</i> | Ozone: Effective Runoff Treatment or a Bunch of Hot Air? <i>Lisa Zawaski : City of Dana Point</i> | Design of Natural Infiltration System Under Updated MS4 Permit for Newport Beach City Hall and Park <i>Jessica Fosbrook, Mathew Bamm : Arup</i> |
| 2:05 - 2:35 | | Initial Implementation of the Truckee River Water Quality Monitoring Plan: Building a Baseline Dataset to Support MS4 and TMDL Compliance <i>Stefan Schuster : CDM</i> | Using Monitoring Data as an Assessment Tool to Guide the Iterative Process (or How to Avoid an NOV) <i>Arne Anselm : Ventura County Watershed Protection District;</i> <i>Mack Walker : Larry Walker Associates</i> | Improving the 4% Bio-Retention Size Criteria: A Flow/Volume-Based Approach for Optimization without Compromising Water Quality <i>Luis Parra-Rosales : URS</i> | Hydromodification Management in the San Diego Region <i>Christina Arias : San Diego Regional Water Quality Control Board</i> |
| Room | TRACK A Spyglass | TRACK B Oak Tree | TRACK C Windjammer | TRACK D Big Sur | TRACK E Cypress |
| SESSION 2 | Industrial Permit | TMDLs In MS4 Permits | Program Assessment | Stormwater Treatment | Sustainable Development |
| Moderator | Matt Lentz : AMEC | Chris Crompton : County of Orange | Scott Taylor : RBF Consulting | Nicole West : LSA Associates, Inc. | Lisa Haney : Orange County Sanitation District |
| 2:40 - 3:10 | Industrial Low Impact Development (ILID) <i>Ross Dunning : Kennedy/Jenks Consultants</i> | Bacteria TMDL Implementation Planning at an Enclosed Marine Beach <i>Gerhardt Hubner : Ventura County Watershed Protection District;</i> <i>Brandon Steets : Geosyntec Consultants</i> | Toxicity Identification Evaluations in Southern California Stormwater: Understanding the Role of Pyrethroid Impacts in the Receiving Environment <i>John Rudolph : Nautilus Environmental</i> | PCB Removal from Stormwater Using an Active Treatment System <i>Tim Bauters : Golder Associates</i> | San Francisco's Urban Watershed Framework – A Decision-Making Process to Support Multi-Benefit Wastewater and Stormwater Projects <i>Joanne Siew : RMC Water and Environment</i> |
| ALTERNATE | Compliance Implications of the Proposed Industrial General Permit: Case Studies from Southern California <i>John Quenzer : D-Max Engineering;</i> <i>Annika Kubischta : D-Max Engineering</i> | Mercury Erosion Control Study and TMDL Implementation at Former Mercury Mine, Santa Clara County, California <i>Bonnie de Berry : URS</i> | | Field Testing of Stormwater Treatment Devices: A Comparison of TARP and TAPE Requirements <i>Ryan Janoch : Terraphase Engineering</i> | |
| 3:10 - 3:45 BREAK (Exhibitor Ballroom) | | | | | |
| Room | TRACK A Spyglass | TRACK B Oak Tree | TRACK C Windjammer | TRACK D Big Sur | TRACK E Cypress |
| SESSION 3 | Regulations, Permits & Policies | TMDLs In MS4 Permits | Scientific Advances | Stormwater Treatment | Sustainable Development |
| Moderator | Katharine Wagner : Downey Brand | Mack Walker : Larry Walker Associates | Chris Sommers : EOA, Inc. | Kevin McGillicuddy : Roscoe Moss | Daniel Apt : RBF Consulting |
| 3:45 - 4:15 | The New Draft NPDES Phase II Municipal Permit <i>Gerald Montgomery : Montgomery & Associates;</i> <i>Rebecca Winer-Skonovd : Larry Walker and Associates;</i> <i>Eric Bernsten : California State Water Resources Control Board</i> | Implementation of TMDLs in Stormwater Permits in the San Francisco Bay Region <i>Thomas Mumley : San Francisco Bay Regional Water Quality Control Board</i> | A Microbial Source Identification Project in the Lower San Luis Rey River and the Next Steps Toward the Bacteria Phase I TMDL in Region 9 <i>Alison Witheridge : City of Oceanside;</i> <i>Roshan Sirimanne : AMEC</i> | Stormwater Retrofitting to Reduce Fine Sediment Load to Lake Tahoe: The Tahoe City Residential Water Quality Improvement Project <i>Greg Porter, Stefan Schuster : CDM;</i> <i>Nova Lance-Seghi : County of Placer</i> | The City of Los Angeles Low Impact Development Handbook <i>Ken Susilo, Chris Wessel : Geosyntec Consultants;</i> <i>Michael Scaduto : City of Los Angeles</i> |

| Room | TRACK A Spyglass | TRACK B Oak Tree | TRACK C Windjammer | TRACK D Big Sur | TRACK E Cypress |
|--------------------|---|--|---|--|---|
| SESSION 3 | Regulations, Permits & Policies | TMDLs In MS4 Permits | Scientific Advances | Stormwater Treatment | Sustainable Development |
| Moderator | Katharine Wagner : Downey Brand | Mack Walker : Larry Walker Associates | Chris Sommers : EOA, Inc. | Kevin McGillicuddy : Roscoe Moss | Daniel Apt : RBF Consulting |
| 4:20 - 4:50 | Stormwater Accounting at Lake Tahoe: Giving Credit for Effective Prioritization to Meet Effluent Limits in MS4 Permits <i>Jeremy Sokulsky : Environmental Incentives, LLC; Jacques Landy : US EPA; Karin Staggs : Nevada Tahoe Conservation District</i> | Satellite Remote Sensing Based Watershed Modeling for TMDL Implementation: Case Study – City of Torrance, CA <i>Samuel Darkwah : Carollo Engineers; Inge Wiersema : Carollo Engineers; John Dettle : City of Torrance</i> | Concentrations and Loads of Trace Contaminants in a Small Urban Tributary, San Francisco Bay, California <i>Alicia Gilbreath : San Francisco Estuary Institute</i> | Lessons Learned from San Jose's Stormwater Treatment System Inspection Program <i>Jared Hart : City of San Jose</i> | Gearing Up for New LID Requirements in the San Francisco Bay Area <i>Jill Bicknell : Santa Clara Valley Urban Runoff Pollution Prevention Program</i> |
| 4:55 - 5:25 | Orange and San Diego Counties: Same Minimum Threshold, Different Results. Reasons behind Differences in Peak Flow and Implications for Design <i>Luis Parra-Rosales : URS</i> | MS4 Permits and TMDLs: From MEP to Numeric Limits, the California Experience <i>Karen Cowan : Larry Walker Associates</i> | Evaluating First Flush Pump Station Discharges in San José <i>James Downing : City of San Jose</i> | Building and Testing Rain Gardens to Meet NPDES Retention and Hydromodification Management Requirements <i>Tom Dalziel : Contra Costa Clean Water Program; Dan Cloak : Dan Cloak Environmental Consulting</i> | Green Infrastructure and Low Impact Development in Southern California Urban Retrofits <i>Edward Belden, Kristy Morris : Los Angeles & San Gabriel River Watershed Council</i> |
| ALTERNATE | | Leveraging the MS4 Permit <i>Mark Pumford : City of Oxnard</i> | A Cost-Effective and Integrative Approach to Monitoring and Assessing Beneficial Use Impacts in Receiving Waters and Associated Solutions <i>Luch Buchan : EOA, Inc.</i> | | |
| 5:30 - 7:30 | EXHIBITOR RECEPTION (Exhibitor Ballroom) | | | | |



CASQA TECHNICAL PROGRAM AGENDA WEDNESDAY, SEPTEMBER 28, 2011

| 7:00a - 8:30a CONSTRUCTION QSD AND QSP FORUM (Spyglass) | | | | | |
|--|---|--|--|--|--|
| 7:30a - 12:00p REGISTRATION DESK (2nd Floor Lobby) | | | | | |
| 8:00a - 1:30p EXHIBITS (Exhibitor Ballroom) | | | | | |
| Room | TRACK A Spyglass | TRACK B Oak Tree | TRACK C Windjammer | TRACK D Big Sur | TRACK E Cypress |
| SESSION 4 | Industrial Permit | TMDLs in MS4 Permits | True Source Control | Scientific Advances | Sustainable Development |
| Moderator | Sandy Mathews : Larry Walker Associates | Anna Lantin : RBF Consulting | Karen Ashby : Larry Walker Associates | Daniel Rourke : Fresno Metropolitan Flood Control District | Jennifer Krebs : San Francisco Estuary Partnership |
| 8:35 - 9:05 | Stormwater Treatment Planning for an Industrial Permit with Numeric Limits, followed by a Panel Q & A – Stormwater Control Planning for Sites with NALs/NELs <i>Brandon Steets : Geosyntec Consultants; Jon Jones : Wright Water Engineers; Robert Pitt : University of Alabama; Michael Stenstrom : University of California Los Angeles; Eric Strecker : Geosyntec Consultants</i> | Clean Watersheds for a Clean Bay – Implementing the San Francisco Bay PCBs and Mercury TMDLs with a Focus on Urban Runoff <i>Jon Konnan : EOA, Inc.</i> | Trash Focus: The San Francisco Bay Area Approach to Developing Baseline Trash Loads and Load Reductions <i>Chris Sommers : Santa Clara Valley Urban Runoff Pollution Prevention Program</i> | WERF BMP Tools: Linking Stormwater BMP Systems Performance to Receiving Water Protection to Improve BMP Selection and Design <i>Christine Pomeroy : University of Utah; Charles Rowney : ACR, LLC; Larry Roesner : Colorado State University</i> | LID 2025 – The Path Forward <i>Jennifer Krebs : San Francisco Estuary Partnership</i> <i>Allegra Bukojemsky : Landscape Architect; Eric Berntsen : State Water Resources Control Board</i> <i>Rosey Jencks : San Francisco Public Utilities Commission; Melody Tovar : City of San Jose</i> |
| 9:10 - 9:40 | | Malibu Creek Bioretention Pilot Study <i>Ewelina Mutkowska : County of Ventura</i> | Trash Focus: MRP Controversy – LID and Trash <i>Dale Bowyer : San Francisco Bay Regional Water Quality Control Board</i> | | |
| 9:45 - 10:15 | The Draft Industrial Permit – Will the Additional Costs Achieve Desired Water Quality Results <i>Chandra Thomas : County of Riverside</i> | City of Richmond GIS Storm Drain Network: A Key Step to NPDES Permit and TMDL Compliance <i>Lynne Scarpa : City of Richmond; Jason Drew : NCE</i> | Trash Focus: Partnerships and Alliances: Creating Better Local Product Packaging Ordinances <i>Paul Ledesma, Emy Mendoza : City of San Jose</i> | | |
| ALTERNATE | | Bacterial TMDLs – How a Little Bit Goes a Long Way <i>Gretel Roberts : Weston Solutions; Kelly Goodwin : NOAA</i> | | Design and Application of Stormwater Infiltration Wells <i>Kevin McGillicuddy : Roscoe Moss Company</i> | |
| Room | TRACK A Spyglass | TRACK B Oak Tree | TRACK C Windjammer | TRACK D Big Sur | TRACK E Cypress |
| SESSION 5 | Regulations, Permits & Policies | TMDLs in MS4 Permits | Scientific Advances | Management Tools | Sustainable Development |
| Moderator | Stephanie Reyna-Hiestand : City of Tracy | Mark Grey : Building Industry Association of Southern California | Matt Rich : AMEC | Jason Uhley : Riverside County Flood Control Water Conservation District | Jennifer Krebs : San Francisco Estuary Partnership |
| 10:40 - 11:10 | Watershed Permitting – Has The Time Arrived for Municipal Stormwater Permits? <i>Karen Ashby, Malcolm Walker : Larry Walker Associates</i> | Setting Numeric WLAs to Individual MS4s – Wisconsin's Approach <i>James Bachhuber : AECOM</i> | Development of Algal Indicators for Multiple Bioassessment Applications in Wadeable Streams <i>Betty Fetscher : Southern California Coastal Water Research Project</i> | Development of Technical Support for Hydromodification Assessment and Management in California <i>Eric Stein : Southern California Coastal Water Research Project</i> | LID 2025 – The Path Forward <i>Scott Taylor : RBF Consulting; Greg Haet : University of California, Berkeley</i> <i>Terri Fashing : County of Marin; Anne Cook : Bay-Friendly Landscaping & Gardening Coalition</i> |
| 11:15 - 11:45 | Watershed Permitting – Has The Time Arrived for Municipal Stormwater Permits? <i>Karen Ashby, Malcolm Walker : Larry Walker Associates</i> | Measuring Copper Loads from Urban Runoff – What are We Getting from all the Effort? <i>Garth Engelhorn, Matt Wartian : Weston Solutions</i> | Creek Watch: Citizen Science in the Palm of Your Hand <i>Christine Robson : IBM Almaden Research</i> | Developing a Local Policy for Selection of Treatment Control Best Management Practices (BMPs) Using Numerically Based Performance Criteria to Ensure Compliance with a Maximum Extent Practicable Regulatory Standard <i>James Nabong : City of San Diego; Cory-LaNeave Jones : URS</i> | |
| ALTERNATE | | | Stormwater Sample Collection Methods Flow-Weighted Composites and Pollutograph <i>Sean Porter : SCS Engineers</i> | | |
| 11:45 - 1:15 EXHIBITOR FOCUS (Exhibitor Ballroom) & LUNCH (Monterey Grand Ballroom) | | | | | |

| Room | TRACK A Spyglass | TRACK B Oak Tree | TRACK C Windjammer | TRACK D Big Sur | TRACK E Cypress |
|-------------|--|--|--|---|--|
| SESSION 6 | Regulations, Permits & Policies | Modifying Public Behavior | Program Assessment | Stormwater Treatment | Sustainable Development |
| Moderator | Anna Lantin : RBF Consulting | Sandy Mathews : Larry Walker Associates | Stephanie Reyna-Hiestand : City of Tracy | Kristina Schneider : AMEC | Bill Flores : HDR, Inc. |
| 1:15 - 1:45 | Challenges and Solutions for Developing TMDLs for Bioaccumulative Pollutants: <i>Karen Cowan, Stephen McCord : Larry Walker Associates</i> | Case Studies in Industrial/ Commercial Enforcement in the City of San Diego <i>John Quenzer : D-Max Engineering; Joan Brackin : City of San Diego</i> | California Dreaming – Evaluation of Stormwater Pollution Prevention Audits Using the CASQA Effective- ness Assessment Guidance <i>Ellen Stewart, Kevin Buckley : City of Seattle; Jessica Branom-Zwick : Cascadia Consulting Group</i> | Solutions for Mosquito Larval Control in Stormwater Systems with the Implementation of Mosquito Reducing Best Management Practices (BMPs) <i>Marty Scholl : Sacramento- Yolo Mosquito and Vector Control District</i> | Integrated Water Resources Benefits from Prioritized Low Impact Development BMPs in New Development and Significant Redevelopment WQMPs <i>Steven Wolosoff, Don Schroeder : CDM</i> |
| 1:50 - 2:20 | Development of Water Quality Design Storm: Economic Consideration in Stormwater Quality Improvement Practices Under Extreme Flow Conditions <i>Youn Sim : Los Angeles County Flood Control District</i> | Bacterial Source Tracking in the Tijuana River – Moving from Monitoring to Restoration within a Trans-Border Watershed <i>Damon Owen, Steve Gruber : Weston Solutions; Ruth Kolb : City of San Diego</i> | Demonstrating Success in Reducing Pollutant Concentrations at Stormwater Outfalls Regulated Under the Industrial Stormwater Program at Clean Water Services <i>Steve Anderson : Clean Water Services</i> | Development of a Database and User-Friendly Fact Sheets for Readily Available Proprietary Best Management Practices (BMPs) for the City of San Diego, CA <i>James Nabong : City of San Diego; Cory-LaNeave Jones : URS</i> | Development of the Orange County Structural BMP Prioritization and Analysis to Support the OCTA Measure M2 – Tier 2 Grant Program <i>Ken Susilo : Geosyntec Consultants; Charlie Larwood : Orange County Transportation Authority</i> |
| 2:25 - 2:55 | Southern California Bight Collaborative – Using Science and a Single Voice to Use Public Resources Effectively to Protect and Restore Areas of Biological Significance (ASBS)— <i>Robert Stein : City of Newport Beach; David Pohl : Weston Solutions</i> | Case Studies on Inspection and Enforcement for Ineffective Treatment Control BMPs <i>Tad Nakatani : D-Max Engineering; James Hook : City of San Diego</i> | Dry Weather Flow Elimination and Stormwater Treatment BMP Effectiveness at Scripps Institution of Oceanography <i>Matt Rich, Jay Shrake : AMEC; Kimberly O'Connell : University of California San Diego</i> | Watershed Retrofit Opportunity Analysis: Developing Conceptual BMP Designs for the City of San Diego <i>Chad Helmle : Tetra Tech</i> | Advancing Conventional Stormwater Treatment with High Flow Rate Bioretention Design <i>Will Harris : Filterra Bioretention Systems</i> |
| ALTERNATE | Implementing LID-Based Hydromodification Controls <i>Judd Goodman : Geosyntec Consultants</i> | A Fresh Approach to Tackle Litter <i>Erica Hooper : S. Groner Associates</i> | Taking the Leap into Stressor Identification – Further Evaluation of Reduced Biological Integrity in a Large Northern California Urban Creek <i>Paul Randall : Santa Clara Valley Urban Runoff Pollution Prevention Program</i> | Lake Rehabilitation Options for the Machado Lake Ecosystem Rehabilitation Project <i>Carla Duncan : CDM</i> | Sustainable Void Space and Long Term Infiltration Performance for Porous Pavement Systems <i>Brad Miller : Environmental Concepts Company</i> |

Construction QSD and QSP Forum

The State Water Resources Control Board issued the General Permit for Storm Water Discharges Associated with Construction and Land Disturbance Activities (CGP) on September 2, 2009. The CGP requires that a Storm Water Pollution Prevention Plan (SWPPP) be prepared by a Qualified SWPPP Developer (QSD) and that implementation of the SWPPP be overseen by a Qualified SWPPP Practitioner (QSP). Effective two years from adoption of the CGP, QSDs and QSPs must have attended a SWRCB sponsored or approved training course, passed an examination, and registered with the California Stormwater Quality Association (CASQA).

Fall 2011 marks the start of the first California rainy season where a trained, credentialed, and registered QSD and QSP will be required on all projects covered by the CGP.

CASQA will host its first Construction QSD and QSP Forum from 7:00 am to 8:30 am on Wednesday, September 28, 2011 in the Spyglass Room. All QSDs and QSPs, individuals pursuing QSD or QSP registration, and individuals interested these new registrations are encouraged to attend. The forum is intended to provide an opportunity to network, discuss topics of mutual interest, and to pose questions and concerns.

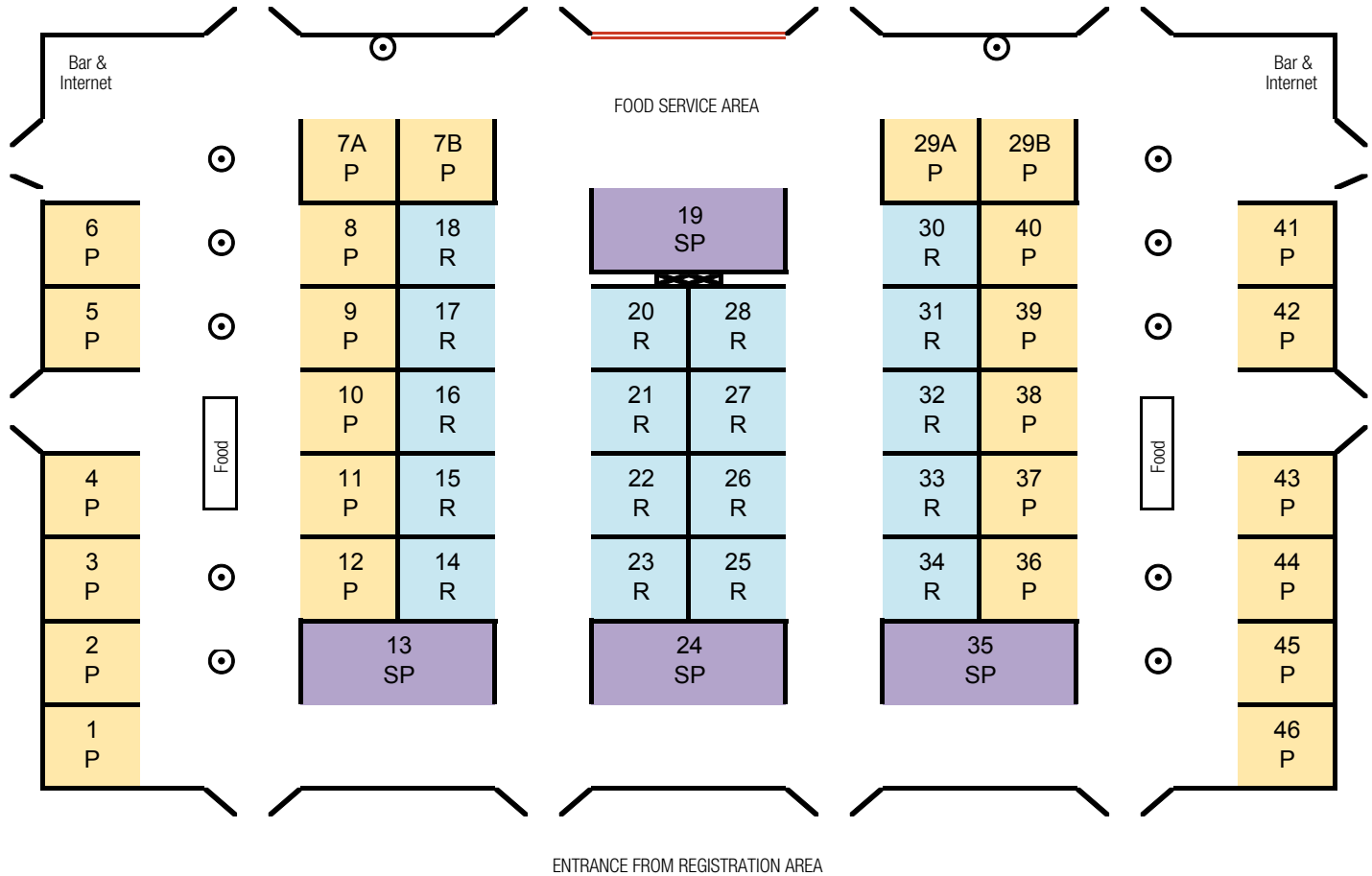
Agenda

- » Welcome, Forum Purpose & Forum Process
Sandy Matthews, Larry Walker Associates
- » QSDs & QSPs – Who We Are
Jeff Endicott, AEI-CASC Consulting
- » QSD & QSP Examination Update
Brian Currier, Office of Water Programs, CSUS
- » QSDs, QSPs & The CGP – Responsibilities and Liabilities
Katharine Wagner, Downey Brand Attorneys LLP
- » Facilitated Topical & Open Forum
Gerald Montgomery, Montgomery Associates

CONFERENCE ROOM AND HOTEL MAP



CASQA CONFERENCE EXHIBITOR LAYOUT



- SUPER PREMIUM EXHIBITOR
- PREMIUM EXHIBITOR
- REGULAR EXHIBITOR

Please refer to the Exhibitor Directory on the following pages.

SUPER PREMIUM EXHIBITORS



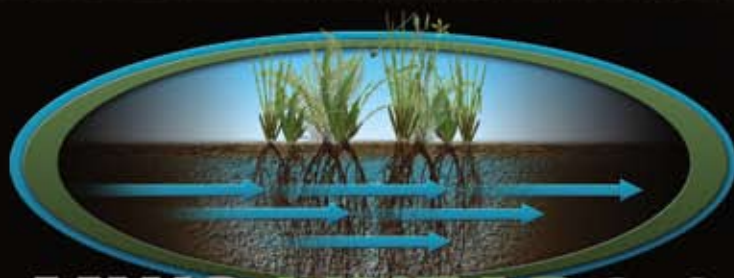
CASQA CONFERENCE EXHIBITORS

| BOOTH | EXHIBITOR | CONTACT | ADDRESS / PHONE | WEBSITE |
|-------|--|--|---|--|
| 1 | Neptune Wheel Wash Systems | Mike Whitney | 174 Cornerstone, Hot Springs, AR 71913 Phone (209) 304-0612 | www.neptunesystems.org |
| 2 | Golder Associates, Inc. | Tim Bauters, PhD, P.E. | 425 Lakeside Drive, Sunnyvale, CA 94085 Phone (408) 220-9236 | www.golder.com |
| 3 | REM, Inc. | Marcel Sloane | 960-B Detroit Avenue, Concord, CA 94518 Phone (925) 676-8676 | www.remfilters.com |
| 4 | Invisible Structures, Inc. | Rick Cavallero | 1600 Jackson St., Suite 310, Golden, CO 80017 Phone (303) 395-1803 | www.invisiblestructures.com |
| 5 | AMEC | Matt Lentz | 510 Superior Ave., Suite 200, Newport Beach, CA 92663 Phone (949) 642-0245 | www.amec.com/water |
| 6 | RBF Consulting | Scott Taylor | 14725 Alton Parkway, Irvine, CA 92618 Phone (800) 479-3808 | www.RBF.com |
| 7A/B | | | | |
| 8 | United Storm Water, Inc. | Lydia Perry | 14000 E. Valley Blvd., City of Industry, CA 91746 Phone (626) 961-9326 | www.unitedstormwater.com |
| 9 | Weck Laboratories, Inc. | Leo Raab | 14859 E. Clark Ave., City of Industry, CA 91745 Phone (626) 336-2139 | www.wecklabs.com |
| 10 | AEI-CASC Consulting | Jeff Endicott, P.E., BCEE, CPESC, QSD/P, ToR | 937 S. Via Lata, Suite 500, Colton, CA 92324 Phone (909) 783-0101 | www.aei-casc.com |
| 11 | StormwaterRx LLC | Calvin Noling, P.E. | 122 SE 27th Ave., Portland, OR 97214 Phone (503) 233-4660 | www.stormwaterx.com |
| 12 | CASQA | Geoff Brosseau | P.O. Box 2105, Menlo Park, CA 94026 Phone (650) 366-1042 | www.casqa.org |
| 13 | StormTrap | Brian Stahl, P.E. | 2495 W. Bungalow Rd., Morris, IL 60450 Phone (877) 867-6872 | www.stormtrap.com |
| 14 | SCI Consulting Group | John W. Bliss, P.E. | 4745 Mangels Blvd., Fairfield, CA 94534 Phone (707) 430-4300 | www.sci-cg.com |
| 15 | ARCADIS/Malcolm Pirnie | Raenell Morris | 888 W. 6th Street, 3rd Floor, Los Angeles, CA 90017 Phone (213) 327-1600 | www.arcadis-us.com |
| 16 | ADH Environmental | Alessandro Hnatt | 3065 Porter St., Suite 101, Soquel, CA 95073 Phone (831) 477-2003 | www.adhenviromental |
| 17 | Rain for Rent | Chris Daines | 3404 State Rd., Bakersfield, CA 93308 Phone (800) 742-7246 | www.rainforrent.com |
| 18 | PermiTrack | Jason P. Sprague, P.E. | Butler Square Building, Suite 710C, 100 North 6th Street, Minneapolis, MN 55403 Phone (612) 217-4420 | www.myNPDESpermit.com |
| 19 | Bio Clean Environmental Services, Inc. | Abigail Kent | 2972 San Luis Rey Rd., Oceanside, CA 92058 Phone (760) 433-7640 | www.BioCleanEnvironmental.net |
| 20 | UltraTech International, Inc. | Matt Shaw | 11542 Davis Creek Court, Jacksonville, FL 32256 Phone (904) 292-1611 | www.spillcontainment.com |
| 21 | Babcock Labs | Daniel Wing | 6100 Quail Valley Court, Riverside, CA 92507 Phone (951) 653-3351 | www.babcocklabs.com |
| 22 | Tetra Tech | Chad Helmle | 301 Mentor Dr., Suite A, Santa Barbara, CA 93111 Phone (805) 681-3100 | www.tetrattech.com |
| 23 | Campbell Scientific, Inc. | Tim Jeppsen | 815 West 1800 North, Logan, UT 84321 Phone (435) 227-9000 | www.campbellsci.com |

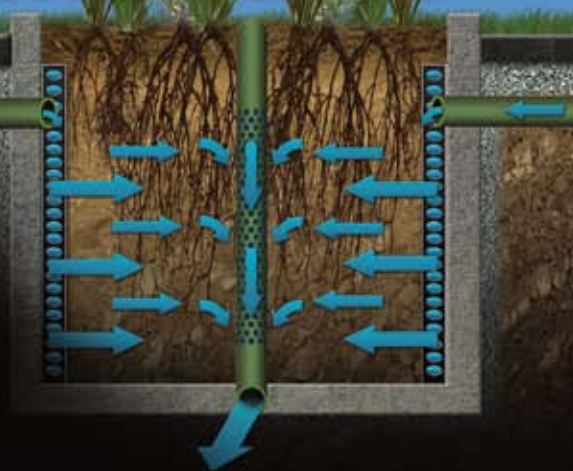
CASQA CONFERENCE EXHIBITORS (cont.)

| BOOTH | EXHIBITOR | CONTACT | ADDRESS / PHONE | WEBSITE |
|-------|---------------------------------------|--------------------|---|--|
| 24 | CONTECH Construction Products, Inc. | Vaikko Allen | 3777 Long Beach Blvd., Suite 400, Long Beach, CA 90807 Phone (562) 733-0733 | www.contech-cpi.com |
| 25 | Jensen Precast | Bryan Bach | 825 Steneri Way, Sparks, NV 89431 Phone (775) 352-2700 | www.jensenprecast.com |
| 26 | California Laboratory Services (CLS) | Ron White | 3249 Fitzgerald Rd., Rancho Cordova, CA 95742 Phone (800) 638-7301 | www.californialab.com |
| 27 | Blocksom and Company | Augie Brazys | 450 St. John Rd., Suite 710, Michigan City, IN 46360 Phone (219) 878-4438 | www.blocksom.com |
| 28 | Reed & Graham, Inc. | Bruce W. Adams | 26 Light Sky Court, Sacramento, CA 95828 Phone (888) 381-0800 | www.rginc.com/geo |
| 29A/B | | | | |
| 30 | Clearwater Solutions, Inc. | Joe Arthur | P.O. Box 2078, Vista, CA 92085 Phone (951) 315-7777 | www.clearwaterbmp.com |
| 31 | CBI Systems, Ltd. | Rick Masters | 3120 Fannin St., Beaumont, TX 77701 Phone (409) 835-3095 | www.cbi-systems.com |
| 32 | Safe Drain, Inc. | John Barhaugh | 119-5 Val Dervin Parkway, Stockton, CA 95206 Phone (408) 738-6600 | www.safedrain.com |
| 33 | California Nevada Cement Association | Paulette Salisbury | 6170 Corte Trancas, Pleasanton, CA 94566 Phone (925) 918-0982 | www.concreteresources.net |
| 34 | EarthGuard by Terra Novo, Inc. | Andy Iturriria | 2930 Patton Way, Bakersfield, CA 93308 Phone (661) 747-5956 | www.EarthGuard.com |
| 35 | KriStar Enterprises, Inc. | Michelle Dunlop | 360 Sutton Place, Santa Rosa, CA 95407 Phone (800) 579-8819 | www.kristar.com |
| 36 | PACE | Michelle Hoalton | 17520 Newhope St., Suite 200, Fountain Valley, CA 92708 Phone (714) 481-7300 | www.pacewater.com |
| 37 | Ahtna Government Services Corporation | Craig O'Rourke | 3680 Industrial Blvd., Suite 600, West Sacramento, CA 95691 Phone (916) 372-2000 | www.ahtnagov.com |
| 38 | Rinker Stormceptor | Jim Johnston, P.E. | 23200 Temescal Canyon Rd., Corona, CA 92883 Phone (909) 322-7604 | www.rinkerstormceptor.com |
| 39 | Roscoe Moss Company | Kevin McGillicuddy | 4360 Worth St., Los Angeles, CA 90063 Phone (323) 263-4111 | www.roscoemoss.com |
| 40 | Advanced Drainage Systems, Inc. | Jeff Pierce | 505 N. 51st Ave., Phoenix, AZ 85043 Phone (951) 796-2048 | www.ads-pipe.com |
| 41 | Sequoia Scientific, Inc. | Ole Mikkelsen | 2700 Richards Road, Suite 107, Bellevue, WA 98005 Phone (425) 641-0944 | www.SequoiaSci.com |
| 42 | Coanda, Inc. | Cynthia L. Esmond | 3943 Irvine Blvd., Suite #327, Irvine, CA 92602 Phone (714) 389-2113 | www.coanda.com |
| 43 | Xeripave, LLC | TC Twitchell | 815 NE 172nd Ave., Vancouver, WA 98684 Phone (800) 377-3877 | www.xeripave.com |
| 44 | SePRO Corporation | Shaun Hyde | 11550 N. Meridian St., Suite 600, Carmel, IN 46032 Phone (317) 580-8097 | www.phoslock.com |
| 45 | | | | |
| 46 | | | | |

A NEW DIRECTION IN BIOFILTRATION



MWS-LINEAR 2.0
Washington State DOE Approved!



THE ONLY STORMWATER BIOFILTER TO UTILIZE

HORIZONTAL FLOW

HORIZONTAL FLOW PROVIDES ADVANTAGES OVER DOWNWARD FLOW SYSTEMS:

- Minimized Clogging
- 2x Greater Surface Area
- Increased Retention Time



760.433.7640
www.ModularWetlands.com

MEDIA FILTERS FOR CURB OR GRATED INLETS

- Removes metals, nutrients & bacteria
- 5 Year Warranty
- Available in Custom Sizes



NUTRIENT SEPARATING BAFFLE BOX

- Inline Design
- Minimal Head Loss
- Easy Maintenance

NJCAT



DOWNSPOUT FILTER

- Inline Design
- Fail Proof High Flow Bypass
- IAMPO Approved



BIO CLEAN
ENVIRONMENTAL SERVICES, INC.

760.433.7640
www.BioCleanEnvironmental.com

Working Together For Better Runoff Solutions



www.kristar.com



Since 1993

Leave a Greener Footprint...

Pretreatment
and Infiltration



CDS® and ChamberMaxx®

Rainwater
Harvesting



UrbanGreen™
Rainwater Harvesting

Biofiltration
and Filtration



UrbanGreen™ BioFilter
and StormFilter

Porous
Pavers



UrbanGreen™
Grass and Gravel Pavers

Achieve your runoff reduction and water quality goals with UrbanGreen
stormwater solutions from CONTECH.

Discover our building block approach at www.contech-cpi.com/urbangreen.

URBANGREEN™ 
www.contech-cpi.com • 800.338.1122



Introducing our new innovative product design

More cost-effective and efficient than ever before

StormTrap® offers the industry's best new solutions for managing runoff, protecting waterways and improving the use of your property. Find out more at www.StormTrap.com.

1-87-STORMTRAP
1-877-867-6872
www.STORMTRAP.com



Copyright © 2011 StormTrap. StormTrap, SingleTrap and DoubleTrap are registered trademarks of StormTrap. U.S. Patent Numbers: 6,991,402 B2; 7,160,056 B2; 7,344,335



Your **Best** legal resource for water law

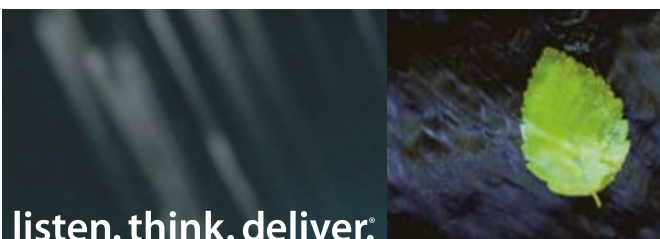
Best Best & Krieger provides advisory and litigation services on water quality issues and assists public agencies and private clients in the obtaining of and compliance with NPDES permits.



BEST BEST & KRIEGER
ATTORNEYS AT LAW

visit www.BBKlaw.com

1891 *120 years* 2011
OF EXCELLENCE



TMDLs

BMPs

Watershed
Restoration

Water Quality

Stormwater
Management

Monitoring

Sampling

Use Attainability

CDM
www.cdm.com

Carlsbad | Irvine | Los Angeles | Rancho Cucamonga
Sacramento | San Diego | Truckee | Walnut Creek

CH2MHILL



Dominguez Gap Wetlands, Long Beach, CA

Creating Innovative and Sustainable Stormwater Solutions for Our Clients

With more than ten offices in California, our engineers, scientists, and planners work collaboratively to address the needs of our clients including:

- Sustainable Development
- Stormwater Quality
- TMDL Studies / Implementation
- LID Studies / Design
- BMP Design

CH2MHILL.com

© 2010 CH2M HILL
WBG091410193406SCO

URS

URS stormwater experts provide high quality, cost-effective services that meet our client's engineering and environmental challenges.

Our experts are registered engineers, CPESCs, CPSWQs, QSDs, QSPs, ToRs, and LEED-AP, who provide the following services:

BMP Pilot Studies, Research, Design, Implementation, Monitoring
Erosion and Sediment Control Management
Hydrology and Hydraulics
Hydromodification Management
Stormwater Compliance and Permitting
Stormwater Management Programs
Stormwater Monitoring, Analysis and Reporting
Stormwater Pollution Prevention Plans (Industrial & Construction)
TMDL Development & Implementation
Training Programs
Watershed Management

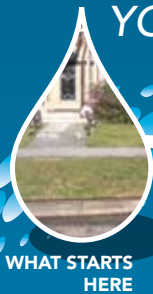
www.urscorp.com

LOS ANGELES 213.996.2300
OAKLAND 510.893.3600
ONTARIO 909.980.4000

SACRAMENTO 916.679.2000
SAN DIEGO 858.812.9292
SANTA ANA 714.835.6886

CONNECT THE DROPS

KNOW WHERE YOUR RUNOFF GOES



WHAT STARTS
HERE



WHICH FLOWS
THROUGH HERE



COULD
TRAVEL HERE



AND ENDS
UP HERE

Runoff is water from sprinklers, hoses or rain that leaves your property. This water can wash litter, pet waste, motor oil, pesticides and other pollutants into the storm drain where it flows untreated into our creeks, rivers, bays and ultimately, our ocean. Make the connection – help prevent water pollution from the start.



Remember The Ocean Begins at Your Front Door

www.ocwatersheds.com

DOWNEY BRAND
ATTORNEYS LLP

Municipal, Industrial & Construction
Storm Water Expertise
Permit Negotiation & Regulatory
Enforcement
Compliance Counseling
Litigation Defense

Contacts:

Nicole Granquist □ Melissa Thorne
Katharine Wagner □ Gregory Broderick

916/444-1000

downeybrand.com



Without stormwater treatment, even a little rain is a big liability.

Fortunately, our industrial stormwater treatment systems remove dirt, oil, metals, soluble organics, phosphorus, bacteria and more. We offer basic and enhanced treatment including the world's most highly advanced systems. Ask what system is right for you. Call now.



Call now: 800.680.3543 or visit stormwaterx.com



Ventura Countywide Stormwater Quality Management Program



Proud to Host The 7th Annual CASQA Conference

CASQA Conference Subcommittee Members

CASQA would like to thank the Conference Subcommittee members for coordinating this year's conference.

Conference Co-Chair

Lisa Austin

Conference Co-Chair

Sharon Gosselin

Accommodations

Lindsay Olson/Event Architects

A/V Coordinator

Jamie Aderhold

Jason Lawrence/Advanced Media

Awards Coordinator

Jill Bicknell

CEU Coordinator

Daniel Apt

Exhibitor Coordinator

Karen Ashby

Graphics

Bev Manzano/Beverly Catli Design

Meals Coordinator

Kristina Schneider

Moderator Coordinator

Anna Lantin

Pre-Conference

Workshop Coordinators

Richard Watson

Daniel Apt

Andre Monette

Matt Lentz

Jeff Endicott

Sandy Matthews

Chris Campbell

Dianne Franks

Program Coordinators

Bill Flores

Kevin McGillicuddy

Promotions Coordinator

Chris Crompton

Sponsorship Coordinator

Matt Lentz

Registration Coordinator

Lindsay Olson and Lilinoe Baring/
Event Architects

Registration Website

April Eades/Events Architects

CASQA Event Coordinator

Amy Porter

CASQA Executive Assistant

Shelley Larson

CASQA Web Designer

Adam Humphrey

CASQA Executive Director

Geoff Brosseau

CASQA Treasurer

Jason Uhley

CASQA Chair


Scott Taylor

Members at large

Tom Lawrence


Nicole West

Bruce Lokkesmoe



WESTON
SOLUTIONS[®]
The Trusted Integrator for
Sustainable Solutions

*"Using proven
science and
natural systems
approach to
solving water
quality
challenges"*



2433 Impala Drive, Carlsbad, CA 92010 / 760-795-6900
With regional offices in Chatsworth, Oakland, and Walnut Creek
www.westonsolutions.com



CASQA
CALIFORNIA STORMWATER
QUALITY ASSOCIATION[®]

We invite you
to consider the many
sponsorship and
advertising opportunities
for the upcoming
CASQA Conference.

www.StormwaterConference.com

CASQA looks forward to seeing attendees again at the 2012 Conference in San Diego.

